



**Live tooling for CNC lathes**  
**Angetriebene Werkzeughalter für CNC-Drehmaschinen**  
**Porte-outils tournants pour centres de tournage**  
**Portaherramientas rotativos para tornos CNC**



**MADALLASA S.A.**  
[www.madalla.com](http://www.madalla.com)

# TABLE OF CONTENTS



**MADAULA S.A.**  
www.madaula.com®



	PAGE
BARUFFALDI-VDI	2 / 3
DIPLOMATIC-VDI	4 / 5
SAUTER-VDI DIN-5480	6 / 7
SAUTER-VDI DIN-5482	8 / 9
BIGLIA	10
DAEWOO	11
DOOSAN	12 / 13
EMCO	14 / 15
HAAS	16
HWACHEON	17
MAZAK	
MULTIPLEX 610/6100 620/6200	18
SQT-100M / 10M(S) , 200M / 250M / 15M / 18M	19
SQT-300M (S) / 28M / 30M(S)	20
MORI SEIKI	
DL-20 / 25MC	21
DL-151Y	22
SL / ZL / DL-150 MC / SL 153-154 MC	23
SL / ZL / DL-200 / 250MC SL-203 / 204 / 253, SL-2500Y SL-300	24
NAKAMURA	
TW-10, SC150, SC250, WT-20, WT-250, TMC18, WTW-150, WTS-150	25
TW-20, SC300, STW-40, TW-30, SC450,	26
OKUMA	
LB-10M, LB-200M LB-15M, LU-15M, LB-300M, CAPTAIN L370-M	27
LB-25M, LU-25M, LB-400M, CAPTAIN L470-M LB-35M, LU-35M	28
LT-10M LT-15M LT-25M	29
TORNOS DECO 2000-20/13/10/7	30
CITIZEN L16/20, L32, M12/16, M32	31

more...

	PAGE		PAGE
AFM	8,9	LEADWELL	4,5
AMK	8,9	LEALDE	8,9
AVM	4,5,8,9	MAGDEBURG	8,9
AXA	8,9	MAHO	8,9
BOEHRINGER	6,7,8,9	MANHURIN	6,7
BRAUNGART	6,7	MAS-KOVOSVIT	6,7,8,9
CAZENEUVE	8,9	MAX NOVO	8,9
CINCINNATI	4,5,6,7,8,9	MHP	8,9
CSEPEL	8,9	MAXMULLER	8,9
DAINICHI	6,7,8,9	MONARCH	8,9
DMT	8,9	MONFORTS	6,7,8,9
DÖRRIES-SCHARMANN	8,9	MWF	8,9
DS6-PONY	8,9	NILES	8,9
EMAG	6,7	PADOVANI	4,5
EMCO	4,5,6,7,8,9	RAMO	6,7,8,9
FAMAR	6,7	REALMECA	6,7
FAMOT	6,7	RIKA	6,7
FEMCO	2,3	SCHERER	6,7,8,9
GEMINIS	8,9	SCHÜTTE	8,9
GILDEMEISTER	4,5,6,7,8,9	SHAUBLIN	4,5,6,7
GOODWAY	4,5,6,7,8,9	SOMAB	6,7,8,9
GRAZIANO	6,7,8,9	SONIM	8,9
GURUTZPE	2,3,8,9	SPINNER	6,7,8,9
HANKOOK	4,5,8,9	STOREBRO	8,9
HEID	4,5,8,9	TAKANG	4,5
HERNAULT	4,5	TECHNO	6,7
HERNAULT-TOYODA	4,5	TEZSA	6,7,8,9
HESSAPP	8,9	TOS	8,9
HEYLINGENSTAEDT	8,9	TRAUB	8,9
HITACHI-SEIKI	4,5	VICTOR	4,5,8,9
HYUNDAI	4,5	VOEST-ALPINE	6,7,8,9
INDEX	6,7	WEILER	4,5,6,7,8,9
JATOR	6,7,8,9	WINTEC	4,5,8,9
J.G.WEISSER	6,7	ZPS	4,5
JINN-FA	6,7		
KERN	8,9		
KUMMER	6,7		

We also manufacture for  
Hardinge, Miyano, Romi,  
Traub, and so on.

Live tools for all types of  
lathes. Please ask for  
specific literature.

Up to 25.000 r.p.m



# BARUFFALDI-VDI

VDI-30, VDI-40, VDI-50, VDI-60

FIGURE 1

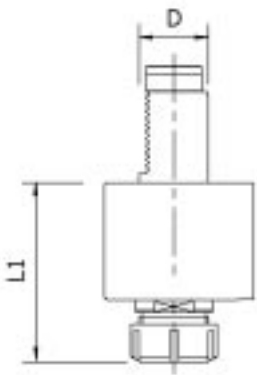


FIGURE 2

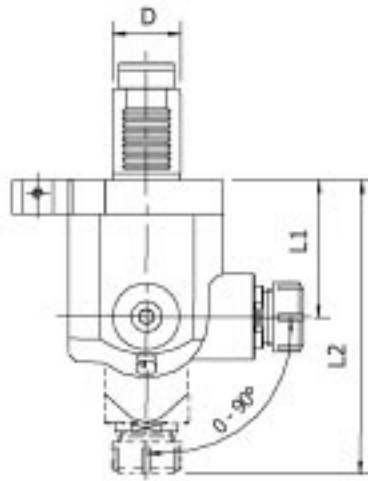


FIGURE 3

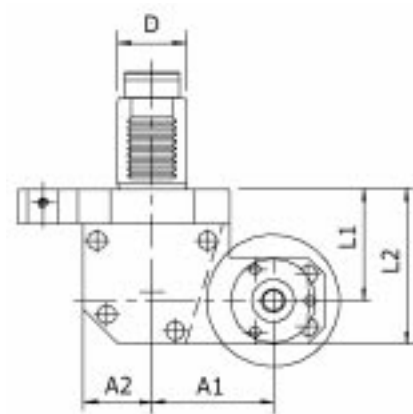


FIGURE 4

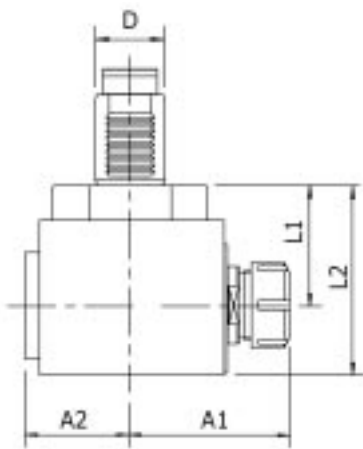


FIGURE 5

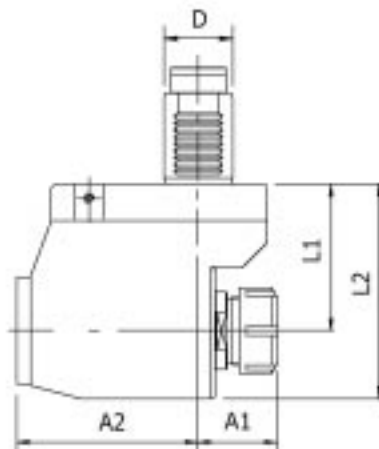
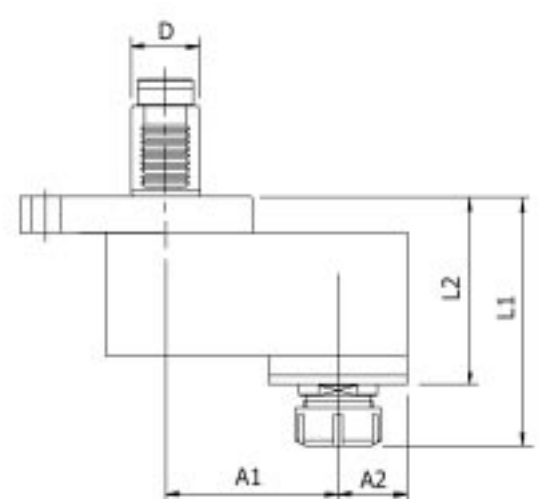


FIGURE 6





# BARUFFALDI-VDI

VDI-30, VDI-40, VDI-50, VDI-60

Order Code	MODEL	Tool Style	Spindle	Figure	MAX RPM	GearRatio	Nm	Option	D	L1	L2	A1	A2
BF.000.30	VDI-30	AXIAL	ER-25	1	6000	1:1 >	30	A, B, C	Ø 30	105			
BF.021.30	VDI-30	ADJ ANGLE	ER-16	2	6000	1:1 <	18	D, B	Ø 30	65	143		
BF.030.30	VDI-30	SAW-MILL	Upon request	3	3000	1:1 <	30	B, C, D	Ø 30	65	90	50	40
BF.010.30	VDI-30	RADIAL	ER-25	4	6000	1:1 <	30	A, B, C, D	Ø 30	58	90	75	50
BF.011.30	VDI-30	RADIAL SET-BACK	ER-25	5	6000	1:1 >	30	A, B, C	Ø 30	70	109	34	83
BF.001.30	VDI-30	AXIAL OFFSET	ER-25	6	6000	1:1 >	30	A, B, C	Ø 30	100	68	65	30

Order Code	MODEL	Tool Style	Spindle	Figure	MAX RPM	GearRatio	Nm	Option	D	L1	L2	A1	A2
BF.000.40	VDI-40	AXIAL	ER-32	1	5000	1:1 >	50	A, B, C	Ø 40	103			
BF.021.40	VDI-40	ADJ ANGLE	ER-25	2	5000	1:1 <	30	D, B	Ø 40	79	169		
BF.030.40	VDI-40	SAW-MILL	Upon request	3	3000	1:1 <	50	B, C, D	Ø 40	65	90	70	40
BF.010.40	VDI-40	RADIAL	ER-32	4	5000	1:1 <	40	A, B, C, D	Ø 40	60	95	85	58
BF.011.40	VDI-40	RADIAL SET-BACK	ER-32	5	5000	1:1 >	40	A, B, C	Ø 40	85	125	40	105
BF.001.40	VDI-40	AXIAL OFFSET	ER-32	6	5000	1:1 >	40	A, B, C	Ø 40	107	74	50	33

Order Code	MODEL	Tool Style	Spindle	Figure	MAX RPM	GearRatio	Nm	Option	D	L1	L2	A1	A2
BF.000.50	VDI-50	AXIAL	ER-40	1	4000	1:1 >	100	A, B, C	Ø 50	110			
BF.021.50	VDI-50	ADJ ANGLE	ER-32	2	4000	1:1 <	60	D, B	Ø 50	82	187		
BF.030.50	VDI-50	SAW-MILL	Upon request	3	2500	1:1 <	50	B, C, D	Ø 50	65	90	85	40
BF.010.50	VDI-50	RADIAL	ER-40	4	4000	1:1 <	80	A, B, C, D	Ø 50	68	110	99	70
BF.011.50	VDI-50	RADIAL SET-BACK	ER-40	5	4000	1:1 >	80	A, B, C	Ø 50	95	135	42	117
BF.001.50	VDI-50	AXIAL OFFSET	ER-40	6	4000	1:1 >	80	A, B, C	Ø 50	150	107	55	46

Order Code	MODEL	Tool Style	Spindle	Figure	MAX RPM	GearRatio	Nm	Option	D	L1	L2	A1	A2
BF.000.60	VDI-60	AXIAL	ER-50	1	3000	1:1 >	180	A, B, C	Ø 60	140			
BF.021.60	VDI-60	ADJ ANGLE	ER-32	2	3000	1:1 <	60	D, B	Ø 60	85	190		
BF.030.60	VDI-60	SAW-MILL	Upon request	3	2000	1:1 <	100	B, C, D	Ø 60	90	132	85	55
BF.010.60	VDI-60	RADIAL	ER-50	4	3000	1:1 <	100	A, B, C, D	Ø 60	83	135	123	80
BF.011.60	VDI-60	RADIAL SET-BACK	ER-50	5	3000	1:1 >	100	A, B, C	Ø 60	120	173	42	163
BF.001.60	VDI-60	AXIAL OFFSET	ER-50	6	3000	1:1 >	100	A, B, C	Ø 60	165	115	70	50

**OPTION CODE**

- A** OPTION - INTERNAL COOLANT
- B** OPTION - SPEED INCREASING
- C** OPTION - SPEED REDUCTION
- D** OPTION - RADIAL TOOL REVERSES FOR SUB-SPIN DLE
- >** CW INPUT = CW OUTPUT
- <** CW INPUT = CCW OUTPUT

OTHER MODELS PLEASE ASK © MADAULA SA. SUBJECT TO CHANGE WITHOUT NOTICE





# DIPLOMATIC-VDI

VDI-30, VDI-40, VDI-50, VDI-60

FIGURE 1

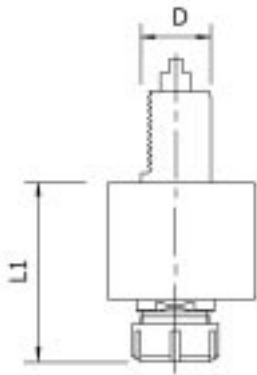


FIGURE 2

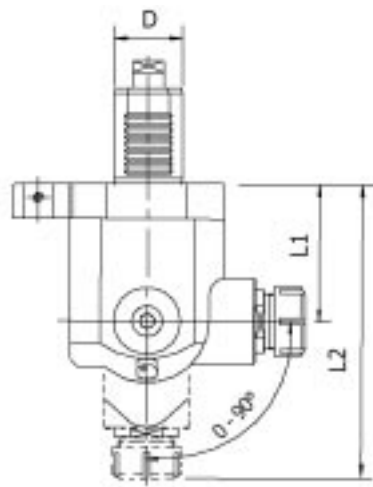


FIGURE 3

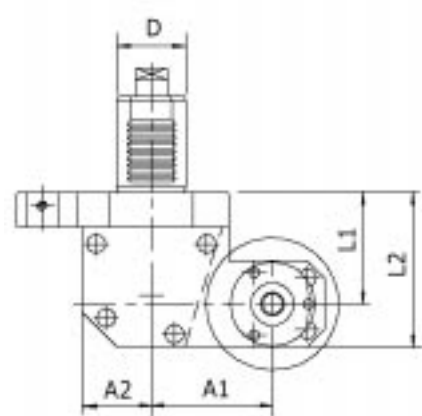


FIGURE 4

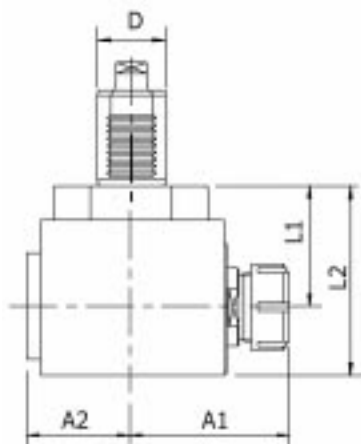


FIGURE 5

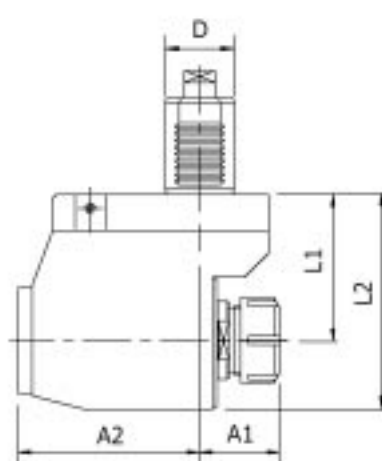
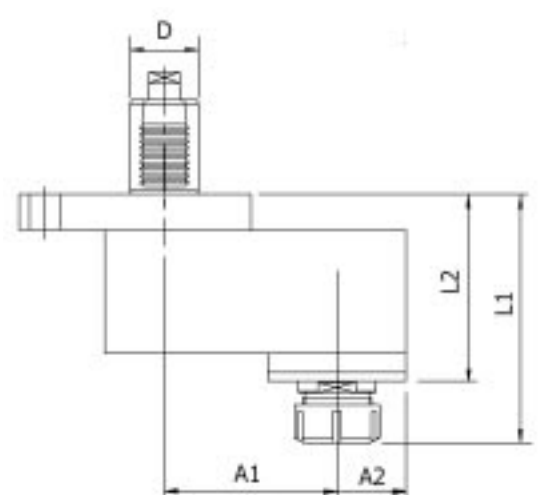


FIGURE 6



# DUPLOMATIC-VDI

## VDI-30, VDI-40, VDI-50, VDI-60

Order Code	MODEL	Tool Style	Spindle	Figure	MAX RPM	GearRatio	Nm	Option	D	L1	L2	A1	A2
DU.000.30	VDI-30	AXIAL	ER-25	1	6000	1:1 >	30	A, B, C	Ø 30	105			
DU.021.30	VDI-30	ADJ ANGLE	ER-16	2	6000	1:1 <	18	D, B	Ø 30	65	143		
DU.030.30	VDI-30	SAW-MILL	Upon request	3	3000	1:1 <	30	B, C, D	Ø 30	65	90	65	40
DU.010.30	VDI-30	RADIAL	ER-25	4	6000	1:1 <	30	A, B, C, D	Ø 30	58	90	75	50
DU.011.30	VDI-30	RADIAL SET-BACK	ER-25	5	6000	1:1 >	30	A, B, C	Ø 30	70	109	45	71
DU.001.30	VDI-30	AXIAL OFFSET	ER-25	6	6000	1:1 >	30	A, B, C	Ø 30	100	68	40	35

Order Code	MODEL	Tool Style	Spindle	Figure	MAX RPM	GearRatio	Nm	Option	D	L1	L2	A1	A2
DU.000.40	VDI-40	AXIAL	ER-32	1	5000	1:1 >	50	A, B, C	Ø 40	103			
DU.021.40	VDI-40	ADJ ANGLE	ER-25	2	5000	1:1 <	30	D, B	Ø 40	79	169		
DU.030.40	VDI-40	SAW-MILL	Upon request	3	3000	1:1 <	50	B, C, D	Ø 40	65	90	85	40
DU.010.40	VDI-40	RADIAL	ER-32	4	5000	1:1 <	40	A, B, C, D	Ø 40	70	90	85	60
DU.011.40	VDI-40	RADIAL SET-BACK	ER-32	5	5000	1:1 >	40	A, B, C	Ø 40	85	125	40	105
DU.001.40	VDI-40	AXIAL OFFSET	ER-32	6	5000	1:1 >	40	A, B, C	Ø 40	107	74	50	33

Order Code	MODEL	Tool Style	Spindle	Figure	MAX RPM	GearRatio	Nm	Option	D	L1	L2	A1	A2
DU.000.50	VDI-50	AXIAL	ER-40	1	4000	1:1 >	100	A, B, C	Ø 50	110			
DU.021.50	VDI-50	ADJ ANGLE	ER-32	2	4000	1:1 <	60	D, B	Ø 50	82	187		
DU.030.50	VDI-50	SAW-MILL	Upon request	3	2500	1:1 <	50	B, C, D	Ø 50	65	90	85	40
DU.010.50	VDI-50	RADIAL	ER-40	4	4000	1:1 <	80	A, B, C, D	Ø 50	68	110	99	65
DU.011.50	VDI-50	RADIAL SET-BACK	ER-40	5	4000	1:1 >	80	A, B, C	Ø 50	95	135	42	117
DU.001.50	VDI-50	AXIAL OFFSET	ER-40	6	4000	1:1 >	80	A, B, C	Ø 50	150	107	55	46

Order Code	MODEL	Tool Style	Spindle	Figure	MAX RPM	GearRatio	Nm	Option	D	L1	L2	A1	A2
DU.000.60	VDI-60	AXIAL	ER-50	1	3000	1:1 >	180	A, B, C	Ø 60	140			
DU.021.60	VDI-60	ADJ ANGLE	ER-32	2	3000	1:1 <	60	D, B	Ø 60	85	190		
DU.030.60	VDI-60	SAW-MILL	Upon request	3	2000	1:1 <	100	B, C, D	Ø 60	90	132	85	55
DU.010.60	VDI-60	RADIAL	ER-50	4	3000	1:1 <	100	A, B, C, D	Ø 60	83	135	123	80
DU.011.60	VDI-60	RADIAL SET-BACK	ER-50	5	3000	1:1 >	100	A, B, C	Ø 60	120	173	42	163
DU.001.60	VDI-60	AXIAL OFFSET	ER-50	6	3000	1:1 >	100	A, B, C	Ø 60	165	115	70	50

#### OPTION CODE

- A** OPTION - INTERNAL COOLANT
- B** OPTION - SPEED INCREASING
- C** OPTION - SPEED REDUCTION
- D** OPTION - RADIAL TOOL REVERSES FOR SUB-SPIN DLE
- >** CW INPUT = CW OUTPUT
- <** CW INPUT = CCW OUTPUT

OTHER MODELS PLEASE ASK

© MADAULA S.A. SUBJECT TO CHANGE WITHOUT NOTICE



# SAUTER-VDI (DIN-5480)

VDI-30, VDI-40, VDI-50, VDI-60

LICENSED BY SAUTER

FIGURE 1

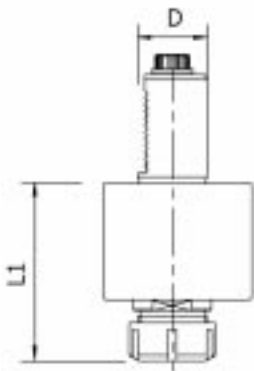


FIGURE 2

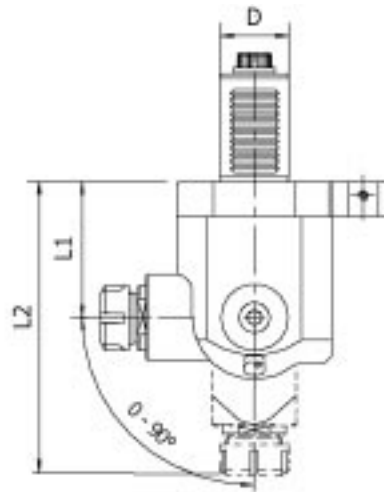


FIGURE 3

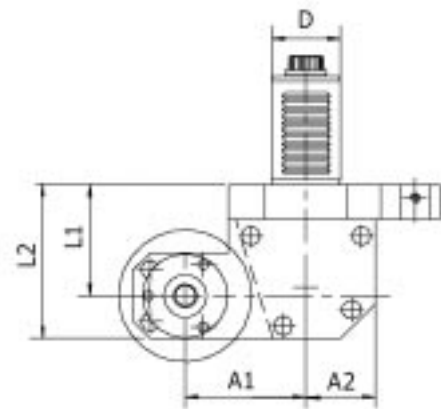


FIGURE 4

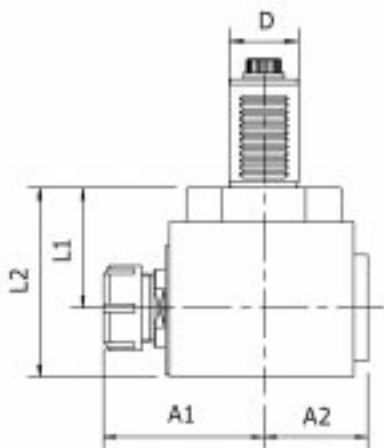


FIGURE 5

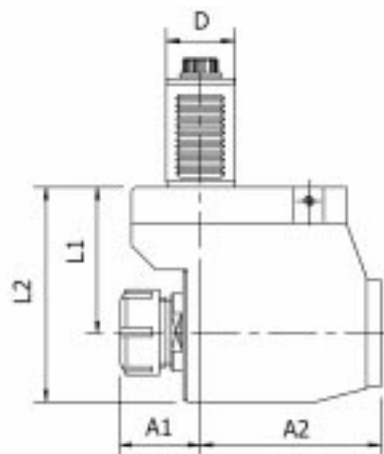
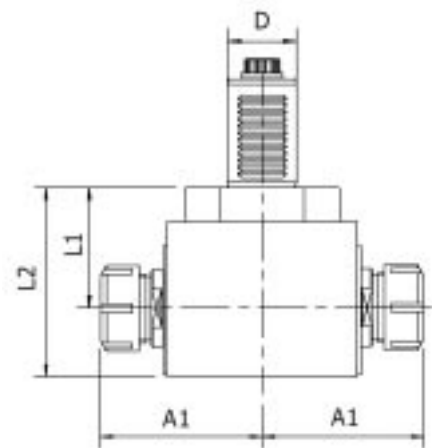


FIGURE 6





# SAUTER-VDI (DIN-5480)

VDI-30, VDI-40, VDI-50, VDI-60

LICENSED BY SAUTER

Order Code	MODEL	Tool Style	Spindle	Figure	MAX RPM	GearRatio	Nm	Option	D	L1	L2	A1	A2
SA.000.3080	VDI-30	AXIAL	ER-25	1	6000	1:1 >	30	A, B, C	Ø 30	105			
SA.021.3080	VDI-30	ADJ ANGLE	ER-16	2	6000	1:1 <	18	D, B	Ø 30	65	143		
SA.030.3080	VDI-30	SAW-MILL	Upon request	3	3000	1:1 <	30	B, C, D	Ø 30	65	90	50	40
SA.010.3080	VDI-30	RADIAL	ER-25	4	6000	1:1 <	30	A, B, C, D	Ø 30	58	90	75	50
SA.011.3080	VDI-30	RADIAL SET-BACK	ER-25	5	6000	1:1 >	30	A, B, C	Ø 30	70	109	45	71
SA.008.3080	VDI-30	FACE/SUB-SPINDLE	ER-20/ER-20	6	6000	1:1 <	30	A, B, C	Ø 30	58	90	75	

Order Code	MODEL	Tool Style	Spindle	Figure	MAX RPM	GearRatio	Nm	Option	D	L1	L2	A1	A2
SA.000.4080	VDI-40	AXIAL	ER-32	1	5000	1:1 >	50	A, B, C	Ø 40	103			
SA.021.4080	VDI-40	ADJ ANGLE	ER-25	2	5000	1:1 <	30	D, B	Ø 40	79	169		
SA.030.4080	VDI-40	SAW-MILL	Upon request	3	3000	1:1 <	50	B, C, D	Ø 40	65	90	85	40
SA.010.4080	VDI-40	RADIAL	ER-32	4	5000	1:1 <	40	A, B, C, D	Ø 40	60	95	85	58
SA.011.4080	VDI-40	RADIAL SET-BACK	ER-32	5	5000	1:1 >	40	A, B, C	Ø 40	85	125	40	105
SA.008.4080	VDI-40	FACE/SUB-SPINDLE	ER-25/ER-25	6	5000	1:1 <	40	A, B, C	Ø 40	60	95	85	

Order Code	MODEL	Tool Style	Spindle	Figure	MAX RPM	GearRatio	Nm	Option	D	L1	L2	A1	A2
SA.000.5080	VDI-50	AXIAL	ER-40	1	4000	1:1 >	100	A, B, C	Ø 50	110			
SA.021.5080	VDI-50	ADJ ANGLE	ER-32	2	4000	1:1 <	60	D, B	Ø 50	82	187		
SA.030.5080	VDI-50	SAW-MILL	Upon request	3	2500	1:1 <	50	B, C, D	Ø 50	65	90	85	40
SA.010.5080	VDI-50	RADIAL	ER-40	4	4000	1:1 <	80	A, B, C, D	Ø 50	68	110	99	65
SA.011.5080	VDI-50	RADIAL SET-BACK	ER-40	5	4000	1:1 >	80	A, B, C	Ø 50	95	135	42	117
SA.008.5080	VDI-50	FACE/SUB-SPINDLE	ER-32/ER-32	6	4000	1:1 <	80	A, B, C	Ø 50	68	110	99	

Order Code	MODEL	Tool Style	Spindle	Figure	MAX RPM	GearRatio	Nm	Option	D	L1	L2	A1	A2
SA.000.6080	VDI-60	AXIAL	ER-50	1	3000	1:1 >	180	A, B, C	Ø 60	140			
SA.021.6080	VDI-60	ADJ ANGLE	ER-32	2	3000	1:1 <	60	D, B	Ø 60	85	190		
SA.030.6080	VDI-60	SAW-MILL	Upon request	3	2000	1:1 <	100	B, C, D	Ø 60	90	132	85	55
SA.010.6080	VDI-60	RADIAL	ER-50	4	3000	1:1 <	100	A, B, C, D	Ø 60	83	135	123	80
SA.011.6080	VDI-60	RADIAL SET-BACK	ER-50	5	3000	1:1 >	100	A, B, C	Ø 60	120	173	42	163
SA.008.6080	VDI-60	FACE/SUB-SPINDLE	ER-40/ER-40	6	3000	1:1 <	100	A, B, C	Ø 60	83	135	123	

#### OPTION CODE

- A** OPTION - INTERNAL COOLANT
- B** OPTION - SPEED INCREASING
- C** OPTION - SPEED REDUCTION
- D** OPTION - RADIAL TOOL REVERSES FOR SUB-SPINDLE
- >** CW INPUT = CW OUTPUT
- <** CW INPUT = CCW OUTPUT

OTHER MODELS PLEASE ASK

© MADAULA SA. SUBJECT TO CHANGE WITHOUT NOTICE







# SAUTER-VDI (DIN-5482)

VDI-30, VDI-40, VDI-50, VDI-60

FIGURE 1

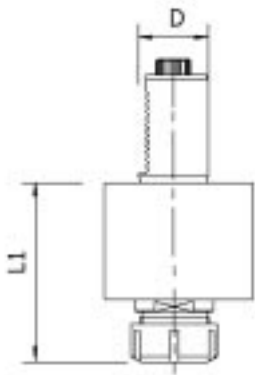


FIGURE 2

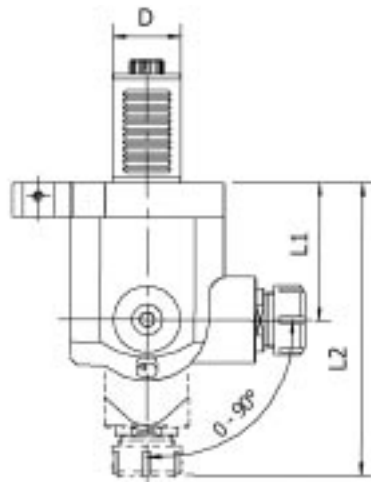


FIGURE 3

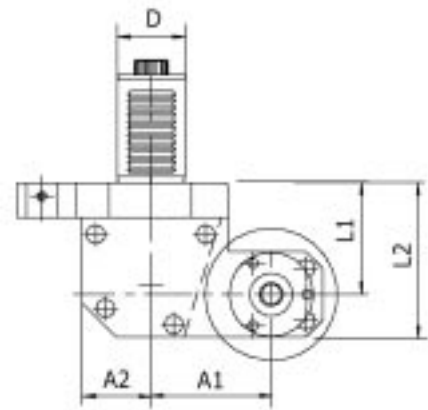


FIGURE 4

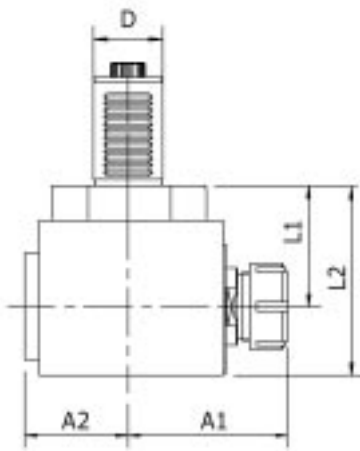


FIGURE 5

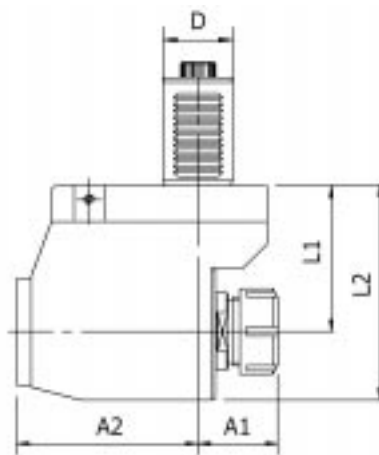
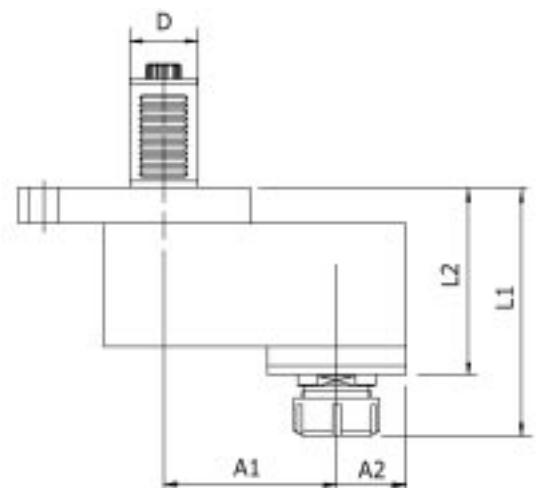


FIGURE 6





# SAUTER-VDI (DIN-5482)

## VDI-30, VDI-40, VDI-50, VDI-60

Order Code	MODEL	Tool Style	Spindle	Figure	MAX RPM	GearRatio	Nm	Option	D	L1	L2	A1	A2
SA.000.3082	VDI-30	AXIAL	ER-25	1	6000	1:1 >	30	A, B, C	Ø 30	105			
SA.021.3082	VDI-30	ADJ ANGLE	ER-16	2	6000	1:1 <	18	D, B	Ø 30	65	143		
SA.030.3082	VDI-30	SAW-MILL	Upon request	3	3000	1:1 <	30	B, C, D	Ø 30	65	90	50	40
SA.010.3082	VDI-30	RADIAL	ER-25	4	6000	1:1 <	30	A, B, C, D	Ø 30	58	90	75	50
SA.011.3082	VDI-30	RADIAL SET-BACK	ER-25	5	6000	1:1 >	30	A, B, C	Ø 30	70	109	45	71
SA.001.3082	VDI-30	AXIAL OFFSET	ER-25	6	6000	1:1 >	30	A, B, C	Ø 30	100	68	65	30

Order Code	MODEL	Tool Style	Spindle	Figure	MAX RPM	GearRatio	Nm	Option	D	L1	L2	A1	A2
SA.000.4082	VDI-40	AXIAL	ER-32	1	5000	1:1 >	50	A, B, C	Ø 40	103			
SA.021.4082	VDI-40	ADJ ANGLE	ER-25	2	5000	1:1 <	30	D, B	Ø 40	79	169		
SA.030.4082	VDI-40	SAW-MILL	Upon request	3	3000	1:1 <	50	B, C, D	Ø 40	65	90	85	40
SA.010.4082	VDI-40	RADIAL	ER-32	4	5000	1:1 <	40	A, B, C, D	Ø 40	60	95	85	58
SA.011.4082	VDI-40	RADIAL SET-BACK	ER-32	5	5000	1:1 >	40	A, B, C	Ø 40	85	125	40	105
SA.001.4082	VDI-40	AXIAL OFFSET	ER-32	6	5000	1:1 >	40	A, B, C	Ø 40	107	74	50	33

Order Code	MODEL	Tool Style	Spindle	Figure	MAX RPM	GearRatio	Nm	Option	D	L1	L2	A1	A2
SA.000.5082	VDI-50	AXIAL	ER-40	1	4000	1:1 >	100	A, B, C	Ø 50	110			
SA.021.5082	VDI-50	ADJ ANGLE	ER-32	2	4000	1:1 <	60	D, B	Ø 50	82	187		
SA.030.5082	VDI-50	SAW-MILL	Upon request	3	2500	1:1 <	50	B, C, D	Ø 50	65	90	85	40
SA.010.5082	VDI-50	RADIAL	ER-40	4	4000	1:1 <	80	A, B, C, D	Ø 50	68	110	99	65
SA.011.5082	VDI-50	RADIAL SET-BACK	ER-40	5	4000	1:1 >	80	A, B, C	Ø 50	95	135	42	117
SA.001.5082	VDI-50	AXIAL OFFSET	ER-40	6	4000	1:1 >	80	A, B, C	Ø 50	150	107	55	46

Order Code	MODEL	Tool Style	Spindle	Figure	MAX RPM	GearRatio	Nm	Option	D	L1	L2	A1	A2
SA.000.6082	VDI-60	AXIAL	ER-50	1	3000	1:1 >	180	A, B, C	Ø 60	140			
SA.021.6082	VDI-60	ADJ ANGLE	ER-32	2	3000	1:1 <	60	D, B	Ø 60	85	190		
SA.030.6082	VDI-60	SAW-MILL	Upon request	3	2000	1:1 <	100	B, C, D	Ø 60	90	132	85	55
SA.010.6082	VDI-60	RADIAL	ER-50	4	3000	1:1 <	100	A, B, C, D	Ø 60	83	135	123	80
SA.011.6082	VDI-60	RADIAL SET-BACK	ER-50	5	3000	1:1 >	100	A, B, C	Ø 60	120	173	42	163
SA.001.6082	VDI-60	AXIAL OFFSET	ER-50	6	3000	1:1 >	100	A, B, C	Ø 60	165	115	70	50

#### OPTION CODE

- A** OPTION - INTERNAL COOLANT
- B** OPTION - SPEED INCREASING
- C** OPTION - SPEED REDUCTION
- D** OPTION - RADIAL TOOL REVERSES FOR SUB-SPIN DLE
- >** CW INPUT = CW OUTPUT
- <** CW INPUT = CCW OUTPUT

OTHER MODELS PLEASE ASK

© MADAULA S.A. SUBJECT TO CHANGE WITHOUT NOTICE





# BIGLIA

BIGLIA B501Y, B301, B56  
EUROTECH 830 SLY, 730 SLY, E42 SL

FIGURE 1

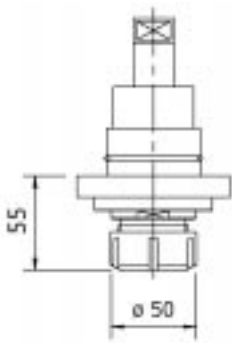


FIGURE 2

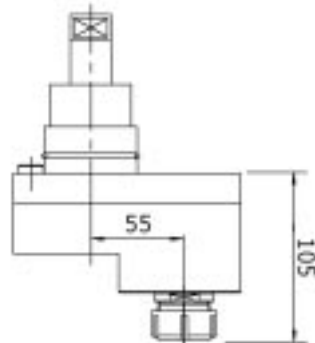


FIGURE 3

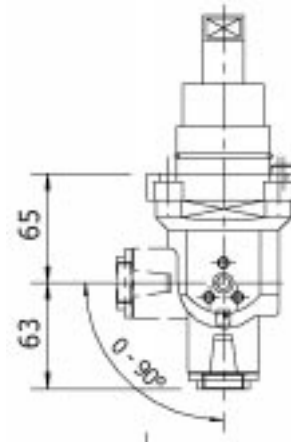


FIGURE 4

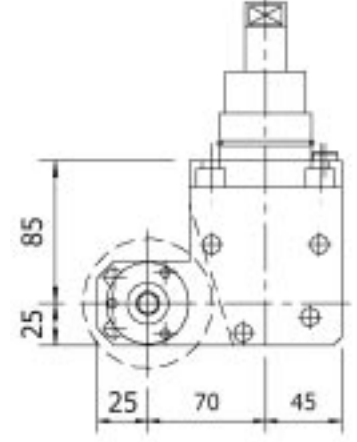


FIGURE 5

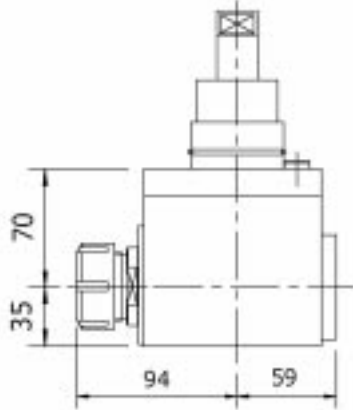


FIGURE 6

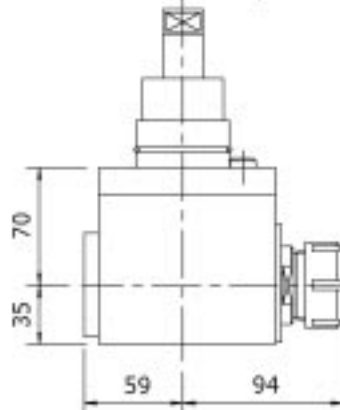
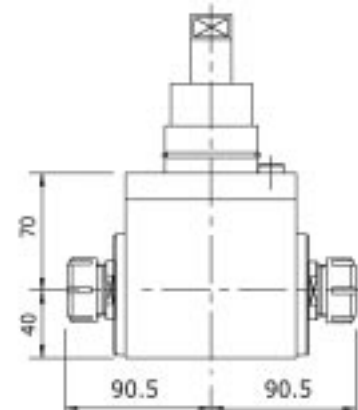


FIGURE 7



Order Code	MODEL	Tool Style	Spindle	Figure	MAX RPM	GearRatio	Nm	Option
BG.000.730SLY	830 SLY, 730 SLY, E42 SL	AXIAL	ER-32	1	4000	1:1 >	50	A, B, C
BG.001.730SLY	830 SLY, 730 SLY, E42 SL	AXIAL OFFSET	ER-25	2	4000	1:1 >	50	A, B, C
BG.021.730SLY	830 SLY, 730 SLY, E42 SL	ADJ ANGLE	ER-16	3	4000	1:1 <	18	D, B
BG.030.730SLY	830 SLY, 730 SLY, E42 SL	SAW-MILL	Upon request	4	3000	1:1 <	25	B, C, D
BG.010.730SLY	830 SLY, 730 SLY, E42 SL	RADIAL	ER-32	5	4000	1:1 <	50	A, B, C, D
BG.033.730SLY	830 SLY, 730 SLY, E42 SL	RADIAL SUBSPINDLE	ER-32	6	4000	1:1 <	50	A, B, C, D
BG.008.730SLY	830 SLY, 730 SLY, E42 SL	FACE/SUB-SPINDLE	ER-25/ER-25	7	4000	1:1 ><	40	A, B, C

OTHER MODELS PLEASE ASK

© MADAULA SA. SUBJECT TO CHANGE WITHOUT NOTICE



**OPTION CODE**

- A** OPTION - INTERNAL COOLANT
- B** OPTION - SPEED INCREASING
- C** OPTION - SPEED REDUCTION

- D** OPTION - RADIAL TOOL REVERSES FOR SUB-SPINDLE
- >** CW INPUT = CW OUTPUT
- <** CW INPUT = CCW OUTPUT



# DAEWOO

## PUMA 230MS PUMA 300MS

FIGURE 1

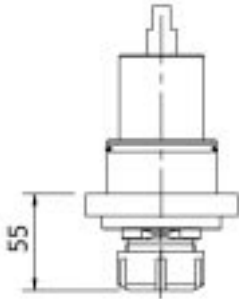


FIGURE 2

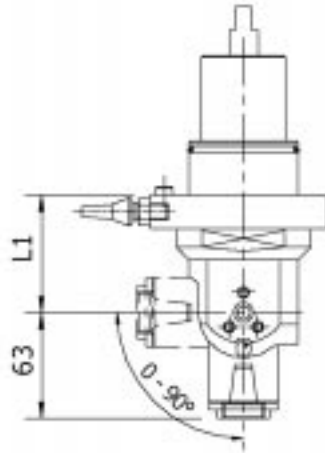


FIGURE 3

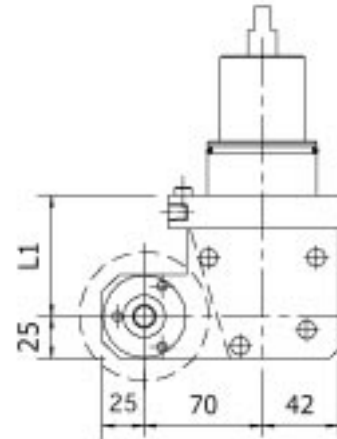


FIGURE 4

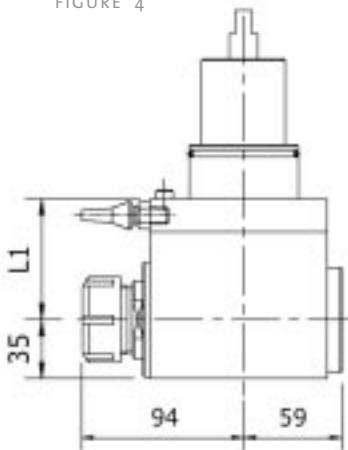


FIGURE 5

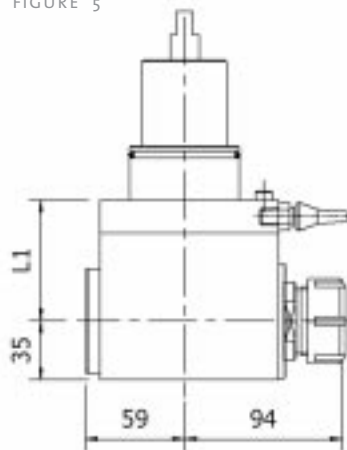
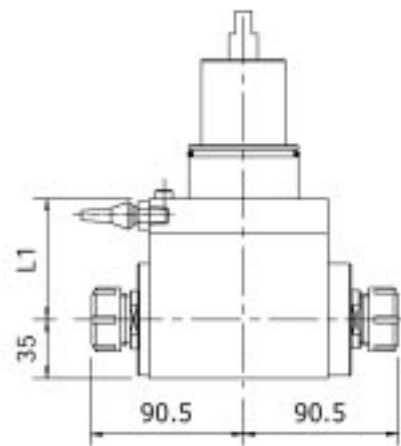


FIGURE 6



Order Code	MODEL	Tool Style	Spindle	Figure	MAX RPM	GearRatio	Nm	Option	L1
DW.000.230M	PUMA-230M	AXIAL	ER-32	1	4000	1:1 >	50	A, B, C	
DW.021.230M	PUMA-230M	ADJ ANGLE	ER-16	2	4000	1:1 <	18	D, B	40,5
DW.030.230M	PUMA-230M	SAW-MILL	Upon request	3	3000	1:1 <	25	B, C, D	65
DW.010.230M	PUMA-230M	RADIAL	ER-32	4	4000	1:1 <	50	A, B, C, D	60
DW.033.230M	PUMA-230M	RADIAL SUBSPINDLE	ER-32	5	4000	1:1 <	50	A, B, C, D	60
DW.008.230M	PUMA-230M	FACE/SUB-SPINDLE	ER-25/ER-25	6	4000	1:1 <	40	A, B, C	60
DW.000.300M	PUMA-300M	AXIAL	ER-32	1	4000	1:1 >	50	A, B, C	
DW.021.300M	PUMA-300M	ADJ ANGLE	ER-25	2	4000	1:1 <	30	D, B	63
DW.030.300M	PUMA-300M	SAW-MILL	Upon request	3	3000	1:1 <	25	B, C, D	72
DW.010.300M	PUMA-300M	RADIAL	ER-32	4	4000	1:1 <	50	A, B, C, D	72
DW.033.300M	PUMA-300M	RADIAL SUBSPINDLE	ER-32	5	4000	1:1 <	50	A, B, C, D	72
DW.008.300M	PUMA-300M	FACE/SUB-SPINDLE	ER-25/ER-25	6	4000	1:1 <	40	A, B, C	72

OTHER MODELS PLEASE ASK © MADAULA SA. SUBJECT TO CHANGE WITHOUT NOTICE

**OPTION CODE**

- A** OPTION - INTERNAL COOLANT
- B** OPTION - SPEED INCREASING
- C** OPTION - SPEED REDUCTION
- D** OPTION - RADIAL TOOL REVERSES FOR SUB-SPINDLE
- >** CW INPUT = CW OUTPUT
- <** CW INPUT = CCW OUTPUT



# DOOSAN

S310, Z290 V420M, V550M  
S390, Z280 S670M, V850M

FIGURE 1

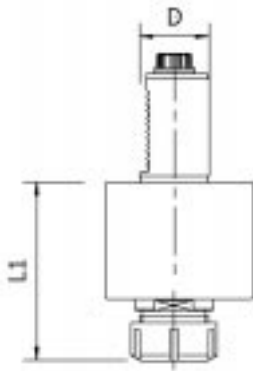


FIGURE 2

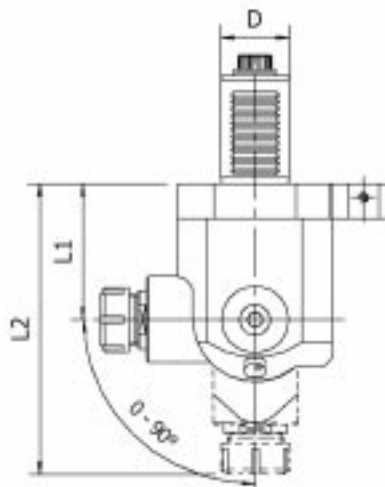


FIGURE 3

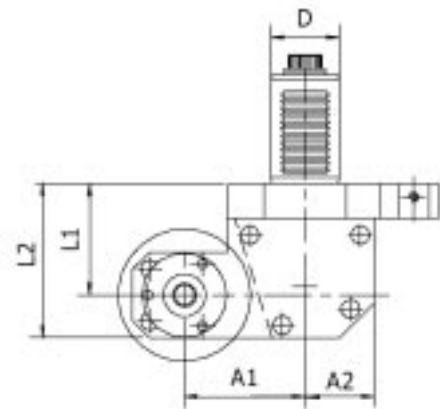


FIGURE 4

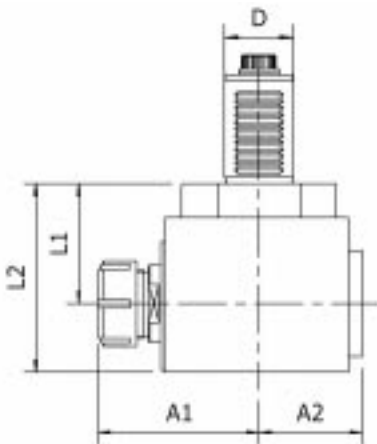


FIGURE 5

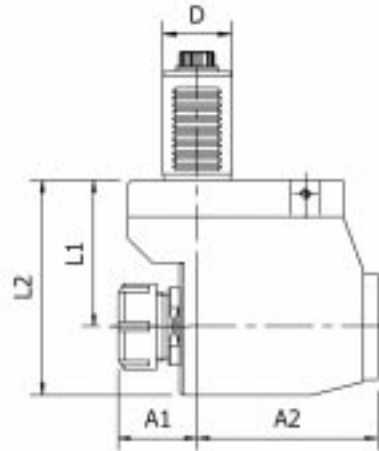
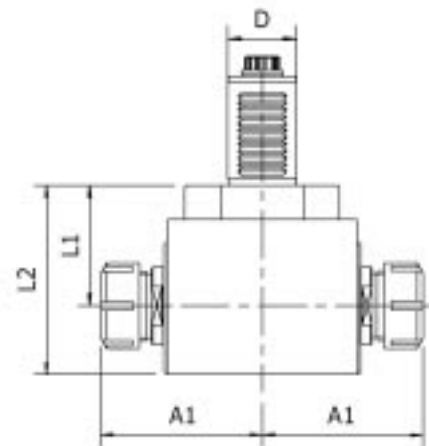


FIGURE 6



# DOOSAN

S310, Z290 V420M, V550M  
 S390, Z280 S670M, V850M

## S310M AND Z290M USE VDI -30, SAUTER DRIVE DIN 5480

Order Code	MODEL	Tool Style	Spindle	Figure	MAX RPM	GearRatio	Nm	Option	D	L1	L2	A1	A2
SA.000.3080	VDI-30	AXIAL	ER-25	1	6000	1:1 >	30	A, B, C	∅ 30	105			
SA.021.3080	VDI-30	ADJ ANGLE	ER-25	2	6000	1:1 <	18	B, D	∅ 30	65	143		
SA.030.3080	VDI-30	SAW-MILL	Upon request	3	3000	1:1 <	30	B, C, D	∅ 30	85	110	85	40
SA.010.3080	VDI-30	RADIAL	ER-25	4	6000	1:1 <	30	A, B, C, D	∅ 30	85	110	85	58
SA.011.3080	VDI-30	RADIAL SET-BACK	ER-25	5	6000	1:1 >	30	A, B, C	∅ 30	85	124	40	105
SA.008.3080	VDI-30	FACE/SUB-SPINDLE	ER-20/ER-20	6	6000	1:1 <	30	A, B, C	∅ 30	85	110	85	

## S390M AND Z280M USE VDI -40, SAUTER DRIVE DIN 5480

Order Code	MODEL	Tool Style	Spindle	Figure	MAX RPM	GearRatio	Nm	Option	D	L1	L2	A1	A2
SA.000.4080	VDI-40	AXIAL	ER-32	1	5000	1:1 >	50	A, B, C	∅ 40	103			
SA.021.4080	VDI-40	ADJ ANGLE	ER-25	2	5000	1:1 <	30	B, D	∅ 40	79	169		
SA.030.4080	VDI-40	SAW-MILL	Upon request	3	3000	1:1 <	50	B, C, D	∅ 40	100	125	85	40
SA.010.4080	VDI-40	RADIAL	ER-32	4	5000	1:1 <	40	A, B, C, D	∅ 40	100	135	85	58
SA.011.4080	VDI-40	RADIAL SET-BACK	ER-32	5	5000	1:1 >	40	A, B, C	∅ 40	100	140	40	105
SA.008.4080	VDI-40	FACE/SUB-SPINDLE	ER-25/ER-25	6	5000	1:1 <	40	A, B, C	∅ 40	100	135	85	

## V420M AND S550M USE VDI -50, SAUTER DRIVE DIN 5480

Order Code	MODEL	Tool Style	Spindle	Figure	MAX RPM	GearRatio	Nm	Option	D	L1	L2	A1	A2
SA.000.5080	VDI-50	AXIAL	ER-40	1	4000	1:1 >	100	A, B, C	∅ 50	110			
SA.021.5080	VDI-50	ADJ ANGLE	ER-32	2	4000	1:1 <	60	B, D	∅ 50	80	187		
SA.030.5080	VDI-50	SAW-MILL	Upon request	3	2500	1:1 <	50	B, C, D	∅ 50	125	150	85	40
SA.010.5080	VDI-50	RADIAL	ER-40	4	4000	1:1 <	80	A, B, C, D	∅ 50	125	165	99	65
SA.011.5080	VDI-50	RADIAL SET-BACK	ER-40	5	4000	1:1 >	80	A, B, C	∅ 50	125	167	42	117
SA.008.5080	VDI-50	FACE/SUB-SPINDLE	ER-32/ER-32	6	4000	1:1 <	80	A, B, C	∅ 50	125	165	99	

## S670M AND V850M USE VDI -60, SAUTER DRIVE DIN 5480

Order Code	MODEL	Tool Style	Spindle	Figure	MAX RPM	GearRatio	Nm	Option	D	L1	L2	A1	A2
SA.000.6080	VDI-60	AXIAL	ER-50	1	3000	1:1 >	180	A, B, C	∅ 60	140			
SA.021.6080	VDI-60	ADJ ANGLE	ER-32	2	3000	1:1 <	60	B, D	∅ 60	85	190		
SA.030.6080	VDI-60	SAW-MILL	Upon request	3	2000	1:1 <	100	B, C, D	∅ 60	125	167	85	55
SA.010.6080	VDI-60	RADIAL	ER-50	4	3000	1:1 <	100	A, B, C, D	∅ 60	125	177	123	80
SA.011.6080	VDI-60	RADIAL SET-BACK	ER-50	5	3000	1:1 >	100	A, B, C	∅ 60	125	178	42	163
SA.008.6080	VDI-60	FACE/SUB-SPINDLE	ER-40/ER-40	6	3000	1:1 <	100	A, B, C	∅ 60	125	177	123	

### OPTION CODE

- A** OPTION - INTERNAL COOLANT
- B** OPTION - SPEED INCREASING
- C** OPTION - SPEED REDUCTION
- D** OPTION - RADIAL TOOL REVERSES FOR SUB-SPINDLE
- >** CW INPUT - CW OUTPUT
- <** CW INPUT - CCW OUTPUT

# EMCO

ET 332 MC, ET 365 MC, ET 425 TCM  
ET 465 MC PLUS/HYPERTURN 665

FIGURE 1

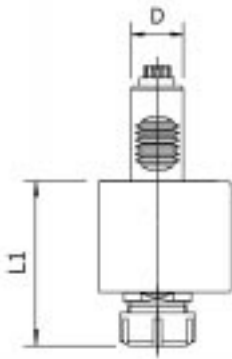


FIGURE 2

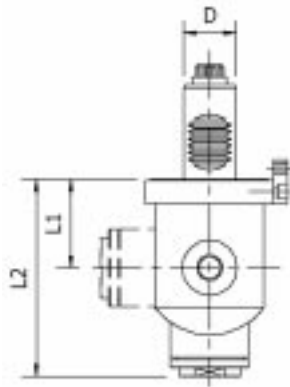


FIGURE 3

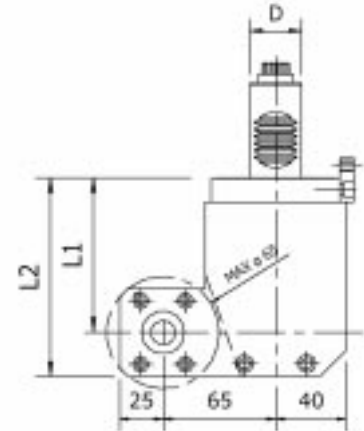


FIGURE 4

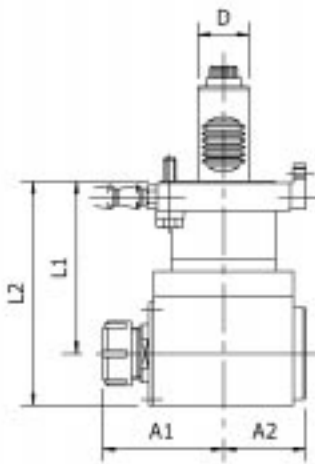


FIGURE 5

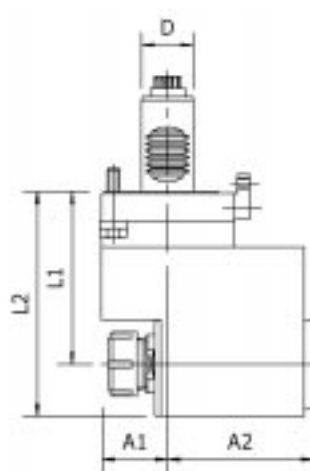
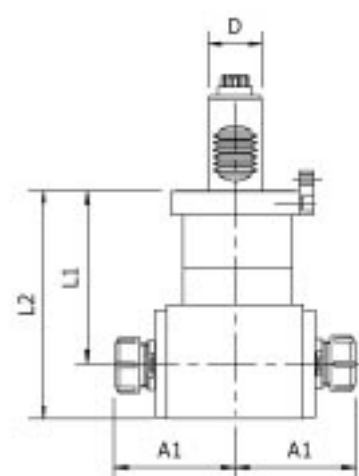
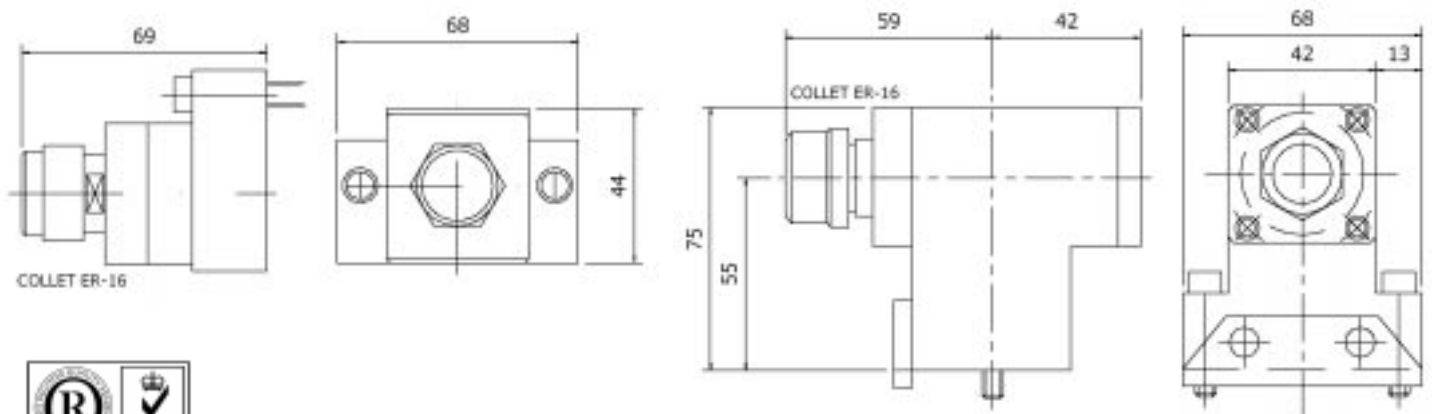


FIGURE 6



## ET 425 TCM



# EMCO

## ET 332 MC, ET 365 MC, ET 425 TCM ET 465 MC PLUS/HYPERTURN 665

ET 332 TCM USE VDI -25, SAUTER DRIVE DIN 5480 (see drawings page 14)

Order Code	MODEL	Tool Style	Spindle	Figure	MAX RPM	GearRatio	Nm	Option	D	L1	L2	A1	A2
EM.000.332MC	ET-332MC	AXIAL	ER-25	1	6000	1:1 >	30	A, B, C	∅ 25	70			
EM.021.332MC	ET-332MC	ADJ ANGLE	ER-16	2	6000	1:1 <	18	B, D	∅ 25	51	114		
EM.030.332MC	ET-332MC	SAW-MILL	Upon request	3	6000	1:1 <	30	B, C, D	∅ 25	75	100		
EM.010.332MC	ET-332MC	RADIAL	ER-25	4	6000	1:1 <	30	A, B, C, D	∅ 25	75	105	72	47
EM.011.332MC	ET-332MC	RADIAL SET-BACK	ER-25	5	6000	1:1 >	30	A, B, C	∅ 25	75	105	37	84
EM.008.332MC	ET-332MC	FACE/SUB-SPINDLE	ER-20/ER-20	6	6000	1:1 ><	30	A, B, C	∅ 25	75	105	74	

ET 345 TCM USE VDI -30, DUPLOMATIC DRIVE DIN 1809 (see drawings page 4)

Order Code	MODEL	Tool Style	Spindle	Figure	MAX RPM	GearRatio	Nm	Option	D	L1	L2	A1	A2
EM.000.345TCM	ET-345TCM	AXIAL	ER-25	1	6000	1:1 >	30	A, B, C	∅ 30	94			
EM.021.345TCM	ET-345TCM	ADJ ANGLE	ER-16	2	6000	1:1 <	18	B, D	∅ 30	51	114		
EM.030.345TCM	ET-345TCM	SAW-MILL	Upon request	3	6000	1:1 <	30	B, C, D	∅ 30	100	125		
EM.010.345TCM	ET-345TCM	RADIAL	ER-25	4	6000	1:1 <	30	A, B, C, D	∅ 30	78	110	72	47
EM.011.345TCM	ET-345TCM	RADIAL SET-BACK	ER-25	5	6000	1:1 >	30	A, B, C	∅ 30	78	110	40	74
EM.008.345TCM	ET-345TCM	FACE/SUB-SPINDLE	ER-20/ER-20	6	6000	1:1 ><	30	A, B, C	∅ 30				

ET 365 TCM USE VDI -30, SAUTER DRIVE DIN 5480 (see drawings page 14)

Order Code	MODEL	Tool Style	Spindle	Figure	MAX RPM	GearRatio	Nm	Option	D	L1	L2	A1	A2
EM.000.365MC	ET-365MC	AXIAL	ER-25	1	6000	1:1 >	30	A, B, C	∅ 30	94			
EM.021.365MC	ET-365MC	ADJ ANGLE	ER-16	2	6000	1:1 <	18	B, D	∅ 30	51	114		
EM.030.365MC	ET-365MC	SAW-MILL	Upon request	3	6000	1:1 <	30	B, C, D	∅ 30	100	125		
EM.010.365MC	ET-365MC	RADIAL	ER-25	4	6000	1:1 <	30	A, B, C, D	∅ 30	100	130	72	47
EM.011.365MC	ET-365MC	RADIAL SET-BACK	ER-25	5	6000	1:1 >	30	A, B, C	∅ 30	100	130	37	84
EM.008.365MC	ET-365MC	FACE/SUB-SPINDLE	ER-20/ER-20	6	6000	1:1 ><	30	A, B, C	∅ 30	100	130	74	

ET 465 TCM and HYPERTURN 665 USE VDI -30, SAUTER DRIVE DIN 5480 (see drawings page 14)

Order Code	MODEL	Tool Style	Spindle	Figure	MAX RPM	GearRatio	Nm	Option	D	L1	L2	A1	A2
EM.000.465MC	ET-465MC	AXIAL	ER-25	1	6000	1:1 >	30	A, B, C	∅ 30	94			
EM.021.465MC	ET-465MC	ADJ ANGLE	ER-16	2	6000	1:1 <	18	B, D	∅ 30	51	114		
EM.030.465MC	ET-465MC	SAW-MILL	Upon request	3	6000	1:1 <	30	B, C, D	∅ 30	100	125		
EM.010.465MC	ET-465MC	RADIAL	ER-25	4	6000	1:1 <	30	A, B, C, D	∅ 30	100	130	72	47
EM.011.465MC	ET-465MC	RADIAL SET-BACK	ER-25	5	6000	1:1 >	30	A, B, C	∅ 30	100	130	37	84
EM.008.465MC	ET-465MC	FACE/SUB-SPINDLE	ER-20/ER-20	6	6000	1:1 ><	30	A, B, C	∅ 30	100	130	74	

### OPTION CODE

- A** OPTION - INTERNAL COOLANT
- B** OPTION - SPEED INCREASING
- C** OPTION - SPEED REDUCTION
- D** OPTION - RADIAL TOOL REVERSES FOR SUB-SPINDLE
- CW INPUT = CW OUTPUT
- ⚡** CW INPUT = CCW OUTPUT





# HAAS

## SL-20

FIGURE 1

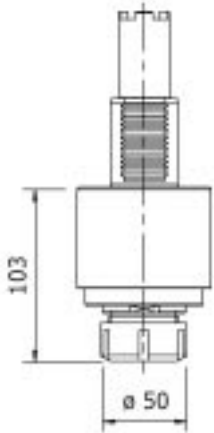


FIGURE 2

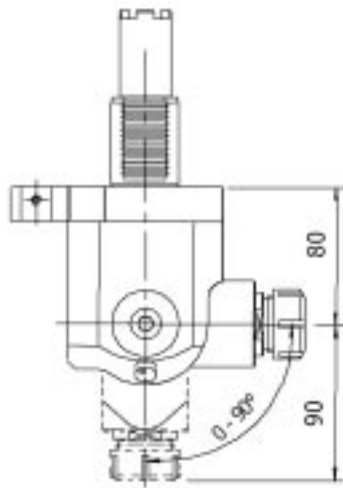


FIGURE 3

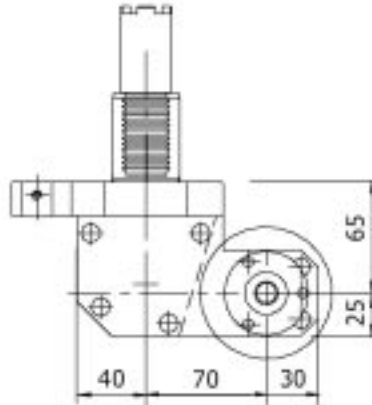


FIGURE 4

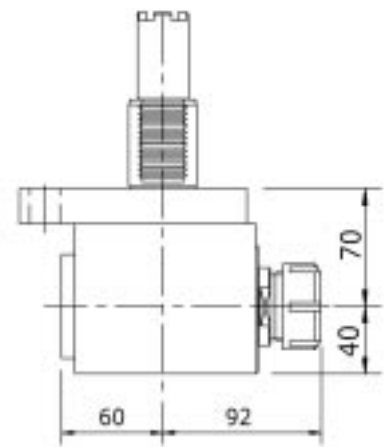


FIGURE 5

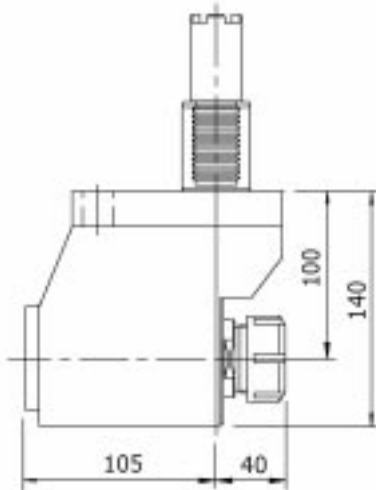


FIGURE 6

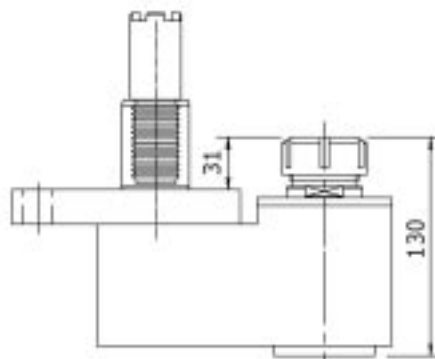
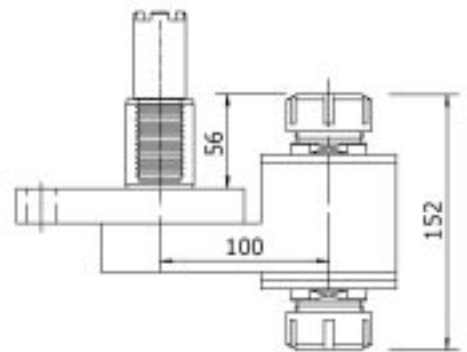


FIGURE 7



Order Code	MODEL	Tool Style	Spindle	Figure	MAX RPM	GearRatio	Nm	Option
HS.000.SL20	SL-20	AXIAL	ER-32	1	5000	1:1 >	50	A, B, C
HS.021.SL20	SL-20	ADJ ANGLE	ER-25	2	5000	1:1 <	25	D, B
HS.030.SL20	SL-20	SAW-MILL	Upon request	3	3000	1:1 <	30	B, C, D
HS.010.SL20	SL-20	RADIAL	ER-32	4	5000	1:1 <	50	A, B, C, D
HS.011.SL20	SL-20	RADIAL SET-BACK	ER-32	5	5000	1:1 <	50	A, B, C
HS.033.SL20	SL-20	RADIAL SUBSPINDLE	ER-32	6	5000	1:1 >	50	A, B, C, D
HS.008.SL20	SL-20	FACE/SUB-SPINDLE	ER-32/ER-32	7	5000	1:1 ><	50	A, B, C

OTHER MODELS PLEASE ASK

© MADAULA SA. SUBJECT TO CHANGE WITHOUT NOTICE

**OPTION CODE**

- A** OPTION - INTERNAL COOLANT
- B** OPTION - SPEED INCREASING
- C** OPTION - SPEED REDUCTION

- D** OPTION - RADIAL TOOL REVERSES FOR SUB-SPINDLE
- >** CW INPUT = CW OUTPUT
- <** CW INPUT = CCW OUTPUT





# HWACHEON

## Hi-ECO-31/35 Hi-TECH 300/400

FIGURE 1

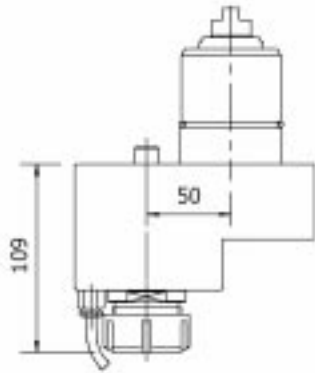


FIGURE 2

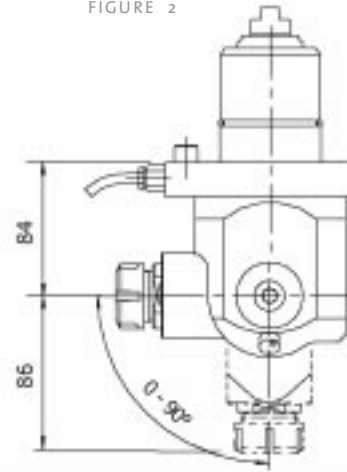


FIGURE 3

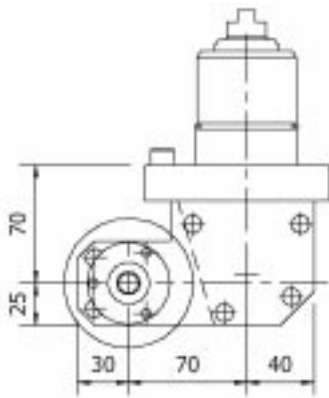
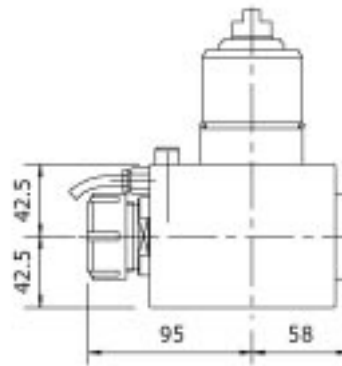


FIGURE 4



Order Code	MODEL	Tool Style	Spindle	Figure	MAX RPM	GearRatio	Nm	Option
HW.000.31/35	HI-ECO-31/35	AXIAL	ER-32	1	4000	1:1 >	50	A, B, C
HW.021.31/35	HI-ECO-31/35	ADJ ANGLE	ER-25	2	4000	1:1 <	25	D, B
HW.030.31/35	HI-ECO-31/35	SAW-MILL	Upon request	3	3000	1:1 <	30	B, C, D
HW.010.31/35	HI-ECO-31/35	RADIAL	ER-32	4	4000	1:1 <	50	A, B, C, D

OTHER MODELS PLEASE ASK © MADAULA SA. SUBJECT TO CHANGE WITHOUT NOTICE

**OPTION CODE**

- A** OPTION - INTERNAL COOLANT
- B** OPTION - SPEED INCREASING
- C** OPTION - SPEED REDUCTION

- D** OPTION - RADIAL TOOL REVERSES FOR SUB-SPINDLE
- >** CW INPUT = CW OUTPUT
- <** CW INPUT = CCW OUTPUT



# MAZAK

## MULTIPLEX 610/6100 MULTIPLEX 620/6200

FIGURE 1

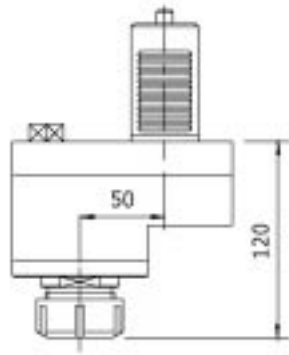


FIGURE 2

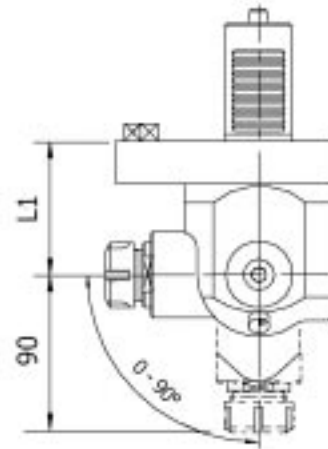


FIGURE 3

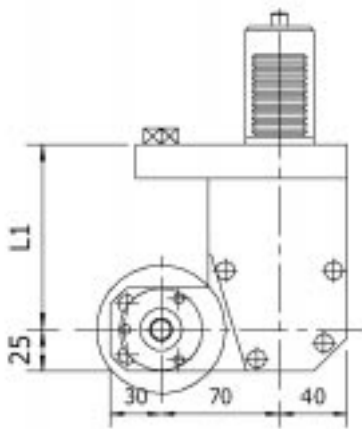
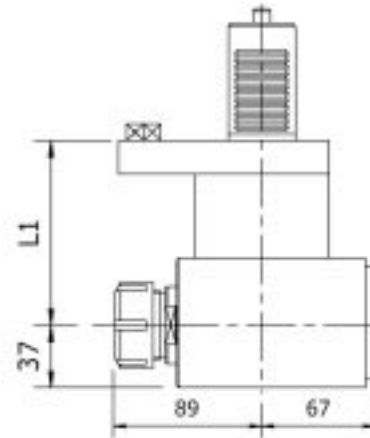


FIGURE 4



Order Code	MODEL	Tool Style	Spindle	Figure	MAX RPM	GearRatio	Nm	Option	L1
MK.001.6100	MULTIPLEX 610 / 6100	AXIAL OFFSET	ER-32	1	5000	1:1 >	50	A, B, C	
MK.021.6100	MULTIPLEX 610 / 6100	ADJ ANGLE	ER-25	2	5000	1:1 <	25	D, B	79
MK.030.6100	MULTIPLEX 610 / 6100	SAW-MILL	Upon request	3	3500	1:1 <	30	B, C, D	115
MK.010.6100	MULTIPLEX 610 / 6100	RADIAL	ER-32	4	5000	1:1 <	50	A, B, C, D	115
MK.001.6200	MULTIPLEX 620 / 6200	AXIAL OFFSET	ER-32	1	5000	1:1 >	50	A, B, C	
MK.021.6200	MULTIPLEX 620 / 6200	ADJ ANGLE	ER-25	2	5000	1:1 <	25	D, B	79
MK.030.6200	MULTIPLEX 620 / 6200	SAW-MILL	Upon request	3	3500	1:1 <	30	B, C, D	130
MK.010.6200	MULTIPLEX 620 / 6200	RADIAL	ER-32	4	5000	1:1 <	50	A, B, C, D	130

OTHER MODELS PLEASE ASK

© MADAULA SA. SUBJECT TO CHANGE WITHOUT NOTICE



**OPTION CODE**

- A** OPTION - INTERNAL COOLANT
- B** OPTION - SPEED INCREASING
- C** OPTION - SPEED REDUCTION

- D** OPTION - RADIAL TOOL REVERSES FOR SUB-SPINDLE
- >** CW INPUT = CW OUTPUT
- <** CW INPUT = CCW OUTPUT



# MAZAK

SQT-100M(S) / 10M(S)  
SQT-200M(S) / 250M(S) / 15M(S) / 18M(S)

FIGURE 1

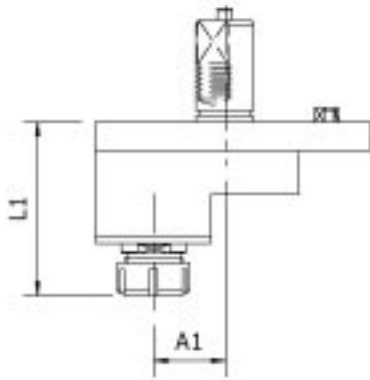


FIGURE 2

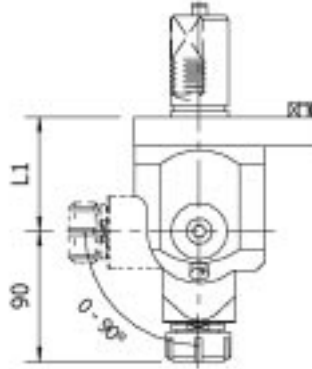


FIGURE 3

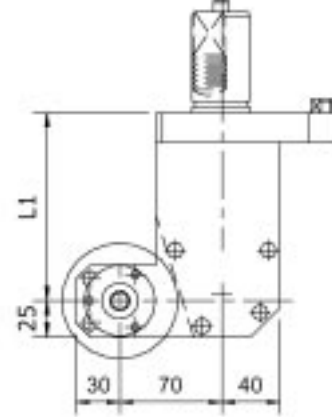


FIGURE 4

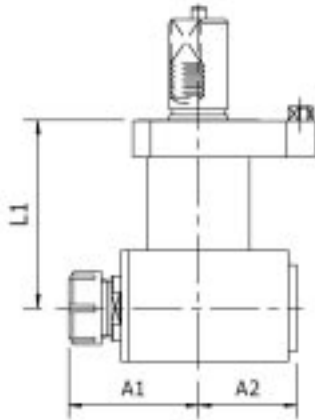


FIGURE 5

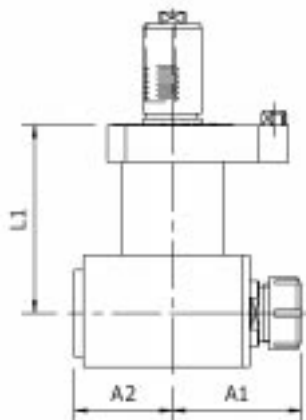
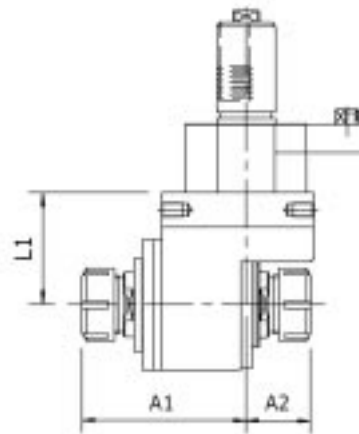


FIGURE 6



Order Code	MODEL	Tool Style	Spindle	Figure	MAX RPM	GearRatio	Nm	Option	L1	A1	A2
MK.001.SQ100	SQT-100M / 10M(S)	AXIAL OFFSET	ER-32	1	5000	1:1 >	50	A, B, C	98	50	
MK.021.SQ100	SQT-100M / 10M(S)	ADJ ANGLE	ER-25	2	5000	1:1 <	25	B, D	79		
MK.030.SQ100	SQT-100M / 10M(S)	SAW-MILL	Upon request	3	3500	1:1 <	30	B, C, D	100		
MK.010.SQ100	SQT-100M / 10M(S)	RADIAL	ER-32	4	5000	1:1 <	50	A, B, C, D	100	85	59
MK.033.SQ100	SQT-100M / 10M(S)	RADIAL SUBSPINDLE	ER-32	5	5000	1:1 <	50	A, B, C	100	77	59
MK.008.SQ100	SQT-100M / 10M(S)	FACE/SUB-SPINDLE	ER-25/ER-25	6	5000	1:1 ><	40	B, C	100	97	36
MK.001.SQ200	SQT-200M(S)	AXIAL OFFSET	ER-32	1	5000	1:1 >	50	A, B, C	110	50	
MK.021.SQ200	SQT-200M(S)	ADJ ANGLE	ER-25	2	5000	1:1 <	25	B, D	79		
MK.030.SQ200	SQT-200M(S)	SAW-MILL	Upon request	3	3500	1:1 <	30	B, C, D	130		
MK.010.SQ200	SQT-200M(S)	RADIAL	ER-32	4	5000	1:1 <	50	A, B, C, D	130	89	68
MK.033.SQ200	SQT-200M(S)	RADIAL SUBSPINDLE	ER-32	5	5000	1:1 <	50	A, B, C	130	89	68
MK.008.SQ200	SQT-200M(S)	FACE/SUB-SPINDLE	ER-32/ER-32	6	5000	1:1 ><	40	B, C	130	117	43

OTHER MODELS PLEASE ASK © MADAULA SA. SUBJECT TO CHANGE WITHOUT NOTICE

**OPTION CODE**

- A** OPTION - INTERNAL COOLANT
- B** OPTION - SPEED INCREASING
- C** OPTION - SPEED REDUCTION
- D** OPTION - RADIAL TOOL REVERSES FOR SUB-SPINDLE
- >** CW INPUT = CW OUTPUT
- <** CW INPUT = CCW OUTPUT





# MAZAK

## SQT-28M / 30M / 300M(S)

FIGURE 1

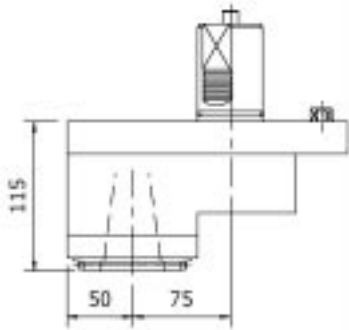


FIGURE 2

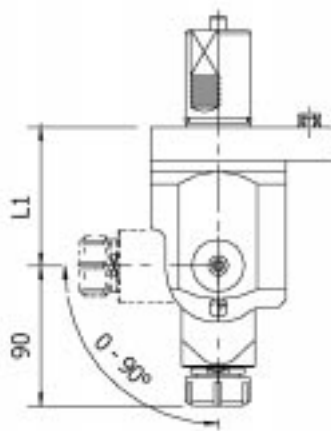


FIGURE 3

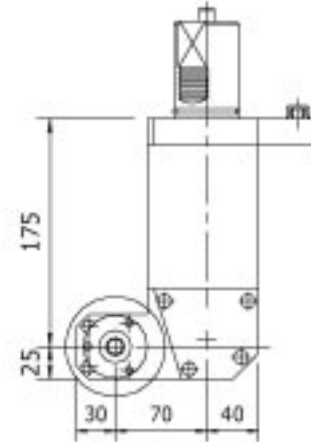


FIGURE 4

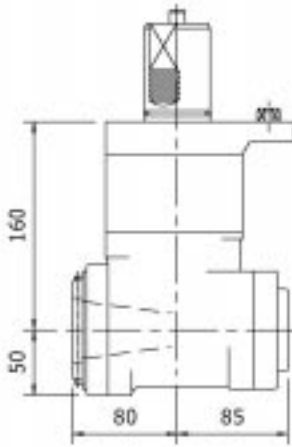


FIGURE 5

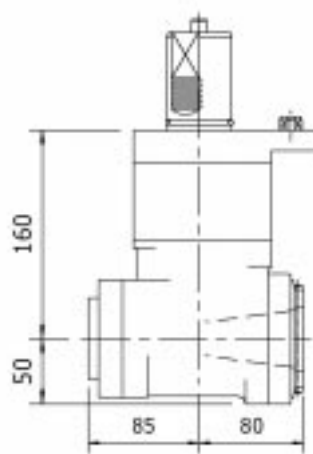
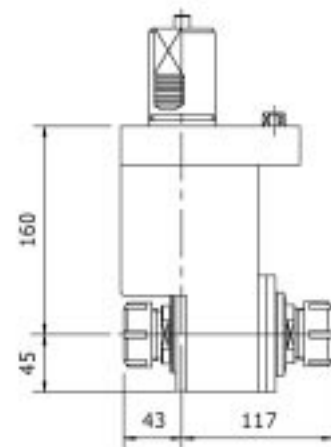


FIGURE 6



Order Code	MODEL	Tool Style	Spindle	Figure	MAX RPM	GearRatio	Nm	Option	L1
MK.001.SQ28	SQT-28M / 30M / 300M(S)	AXIAL OFFSET	ISO-40	1	3000	1:1 >	100	A, B, C	
MK.021.SQ28	SQT-28M / 30M / 300M(S)	ADJ ANGLE	ER-32	2	3000	1:1 <	60	D, B	79
MK.030.SQ28	SQT-28M / 30M / 300M(S)	SAW-MILL	Upon request	3	3000	1:1 <	50	B, C, D	
MK.010.SQ28	SQT-28M / 30M / 300M(S)	RADIAL	ISO-40	4	3000	1:1 <	100	A, B, C, D	
MK.011.SQ28	SQT-28M / 30M / 300M(S)	RADIAL SUBSPINDLE	ISO-40	5	3000	1:1 <	100	A, B, C, D	
MK.008.SQ28	SQT-28M / 30M / 300M(S)	FACE/SUB-SPINDLE	ER-32	6	3000	1:1 <	80	D	

OTHER MODELS PLEASE ASK © MADAULA SA. SUBJECT TO CHANGE WITHOUT NOTICE



**OPTION CODE**

- A** OPTION - INTERNAL COOLANT
- B** OPTION - SPEED INCREASING
- C** OPTION - SPEED REDUCTION

- D** OPTION - RADIAL TOOL REVERSES FOR SUB-SPINDLE
- >** CW INPUT = CW OUTPUT
- <** CW INPUT = CCW OUTPUT



# MORI SEIKI

## DL-20 / 25MC

FIGURE 1

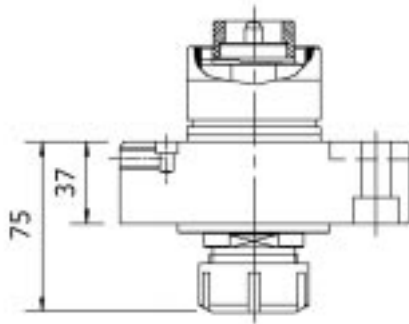


FIGURE 2

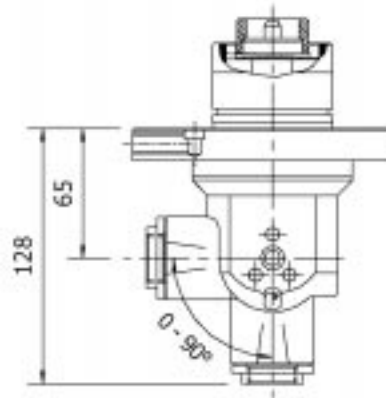


FIGURE 3

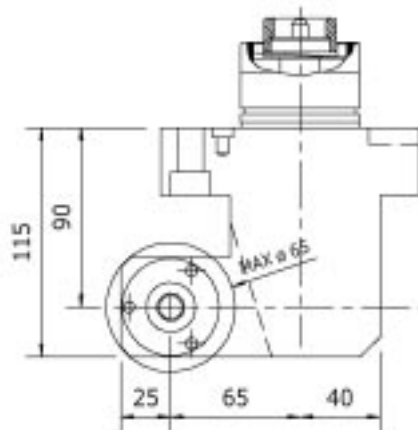
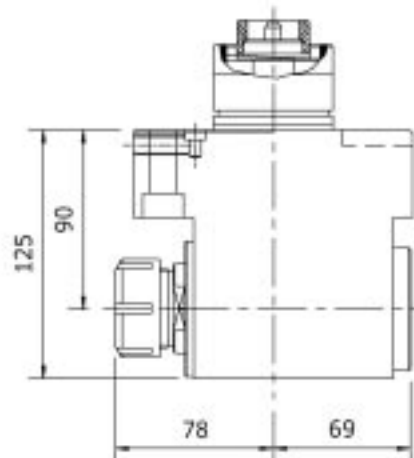


FIGURE 4



Order Code	MODEL	Tool Style	Spindle	Figure	MAX RPM	GearRatio	Nm	Option
MS.001.DL20	DL-20 / 25MC	AXIAL	ER-25	1	4000	1:1 >	30	A, B, C
MS.021.DL20	DL-20 / 25MC	ADJ ANGLE	ER-16	2	4000	1:1 <	18	D, B
MS.030.DL20	DL-20 / 25MC	SAW-MILL	Upon request	3	3000	1:1 <	25	B, C, D
MS.010.DL20	DL-20 / 25MC	RADIAL	ER-25	4	4000	1:1 <	30	A, B, C, D

OTHER MODELS PLEASE ASK © MADAULA SA. SUBJECT TO CHANGE WITHOUT NOTICE

- OPTION CODE**
- A** OPTION - INTERNAL COOLANT
  - B** OPTION - SPEED INCREASING
  - C** OPTION - SPEED REDUCTION

- D** OPTION - RADIAL TOOL REVERSES FOR SUB-SPINDLE
- >** CW INPUT = CW OUTPUT
- <** CW INPUT = CCW OUTPUT



# MORI SEIKI

## DL-151Y

FIGURE 1

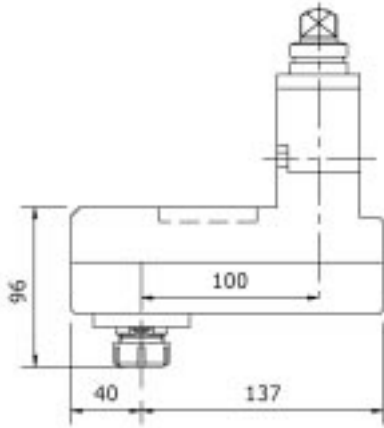


FIGURE 2

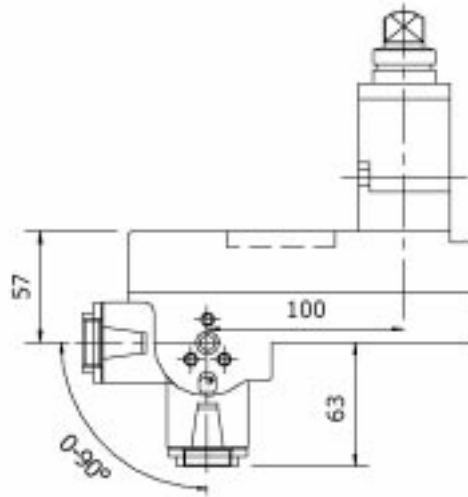


FIGURE 3

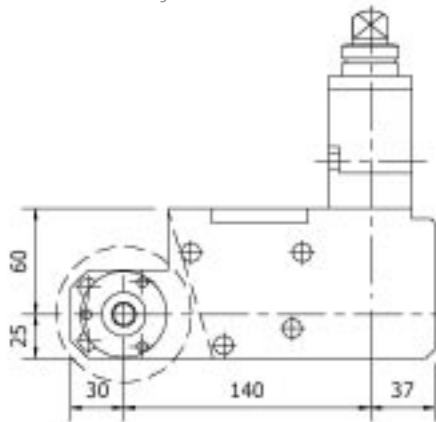
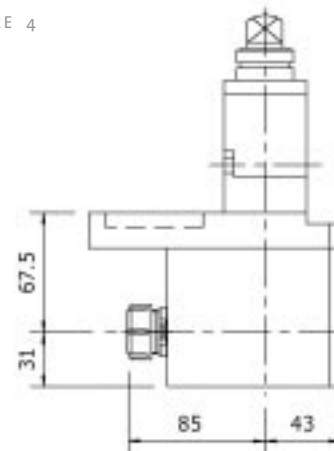


FIGURE 4



Order Code	MODEL	Tool Style	Spindle	Figure	MAX RPM	GearRatio	Nm	Option
MS.001.DL151	DL-151Y	AXIAL OFFSET	ER-25	1	6000	1:1 >	30	A, B, C
MS.021.DL151	DL-151Y	ADJ ANGLE	ER-16	2	6000	1:1 <	18	D, B
MS.030.DL151	DL-151Y	SAW-MILL	Upon request	3	3000	1:1 <	25	B, C, D
MS.010.DL151	DL-151Y	RADIAL	ER-25	4	6000	1:1 <	30	A, B, C, D

OTHER MODELS PLEASE ASK

© MADAULA SA. SUBJECT TO CHANGE WITHOUT NOTICE

**OPTION CODE**

- A** OPTION - INTERNAL COOLANT
- B** OPTION - SPEED INCREASING
- C** OPTION - SPEED REDUCTION

- D** OPTION - RADIAL TOOL REVERSES FOR SUB-SPINDLE
- >** CW INPUT = CW OUTPUT
- <** CW INPUT = CCW OUTPUT





# MORI SEIKI

SL / ZL / DL-150(MC)  
SL / 153-154(MC)

FIGURE 1

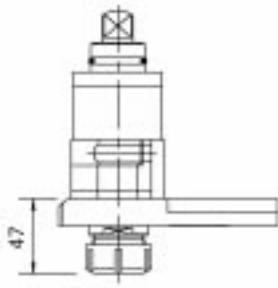


FIGURE 2

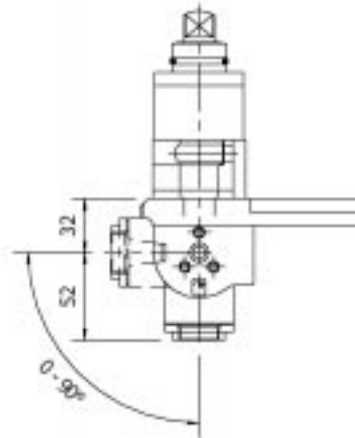


FIGURE 3

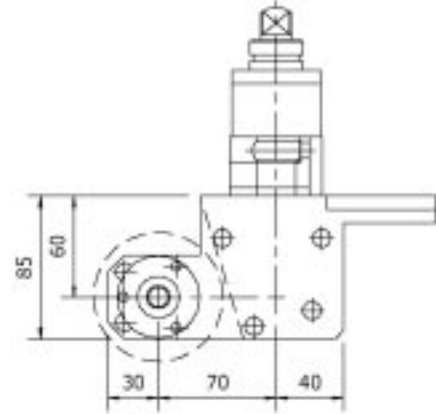


FIGURE 4

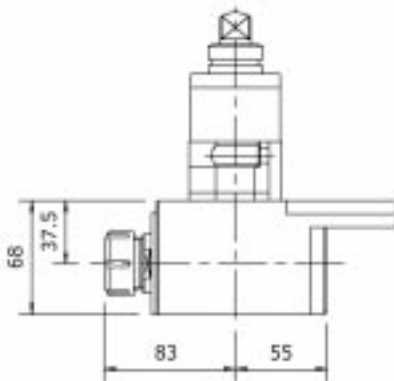


FIGURE 5

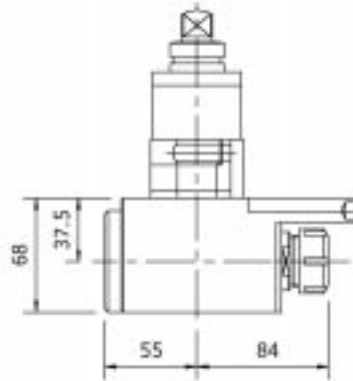
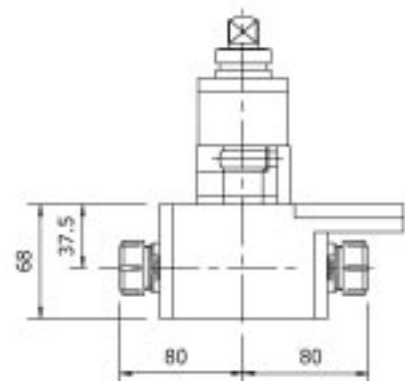


FIGURE 6



Order Code	MODEL	Tool Style	Spindle	Figure	MAX RPM	GearRatio	Nm	Option
MS.000.SL150	SL / ZL / DL-150-153-154	AXIAL	ER-25	1	6000	1:1 >	30	A, B, C
MS.021.SL150	SL / ZL / DL-150-153-154	ADJ ANGLE	ER-16	2	6000	1:1 <	18	B
MS.030.SL150	SL / ZL / DL-150-153-154	SAW-MILL	Upon request	3	3000	1:1 <	25	B, C
MS.010.SL150	SL / ZL / DL-150-153-154	RADIAL	ER-25	4	6000	1:1 <	30	B, C
MS.033.SL150	SL / ZL / DL-150-153-154	RADIAL SUBSPINDLE	ER-25	5	6000	1:1 <	30	B, C
MS.008.SL150	SL / ZL / DL-150-153-154	FACE/SUB-SPINDLE	ER-20/20	6	6000	1:1 <	30	B, C

OTHER MODELS PLEASE ASK © MADAULA SA. SUBJECT TO CHANGE WITHOUT NOTICE

**OPTION CODE**

- A** OPTION - INTERNAL COOLANT
- B** OPTION - SPEED INCREASING
- C** OPTION - SPEED REDUCTION

- D** OPTION - RADIAL TOOL REVERSES FOR SUB-SPINDLE
- >** CW INPUT = CW OUTPUT
- <** CW INPUT = CCW OUTPUT





# MORI SEIKI

SL / ZL / DL-200 / 250MC  
SL-203 / 204 / 253  
SL-2500Y SL-300

FIGURE 1

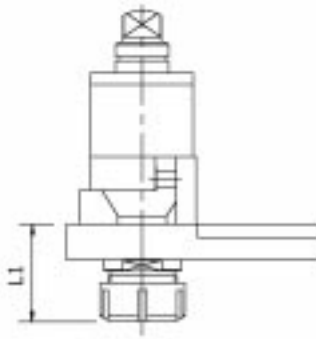


FIGURE 2

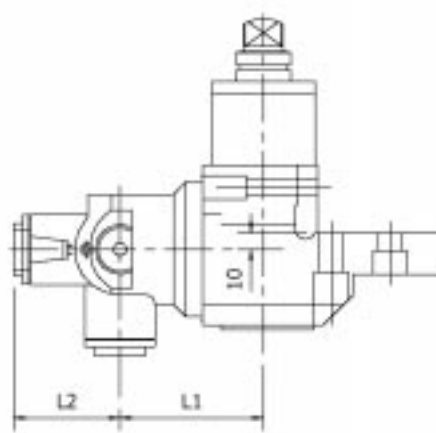


FIGURE 3

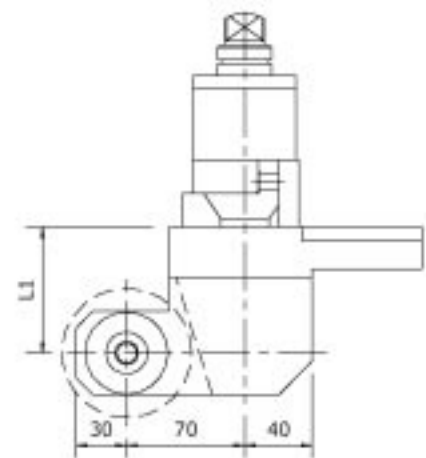


FIGURE 4

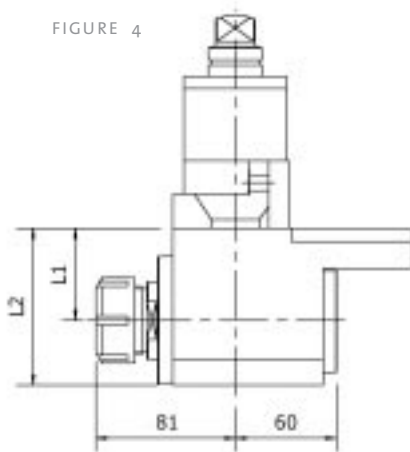


FIGURE 5

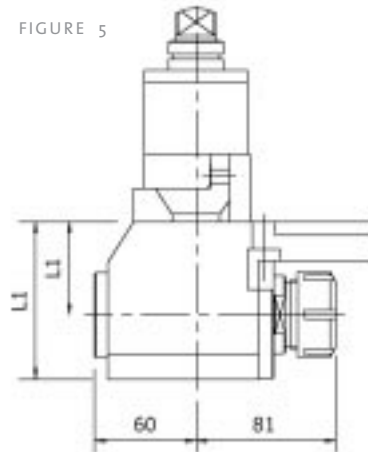
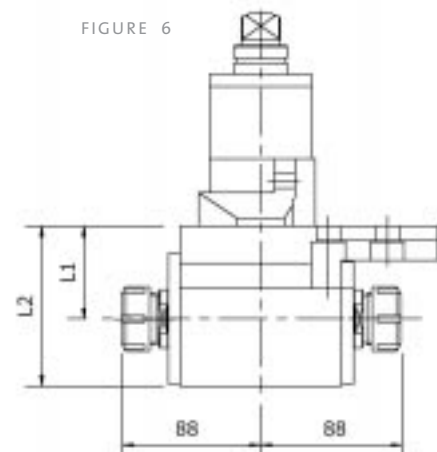


FIGURE 6



Order Code	MODEL	Tool Style	Spindle	Figure	MAX RPM	GearRatio	Nm	Option	L1	L2
MS.000.SL200	SL / ZL-200 / 250,SL-2500Y	AXIAL	ER-32	1	4000	1:1 >	50	A, B, C	61	
MS.021.SL200	SL / ZL-200 / 250,SL-2500Y	ADJ ANGLE	ER-16	2	4000	1:1 <	18	B	85	63
MS.030.SL200	SL / ZL-200 / 250,SL-2500Y	SAW-MILL	Upon request	3	3000	1:1 <	30	B, C	75	
MS.010.SL200	SL / ZL-200 / 250,SL-2500Y	RADIAL	ER-32	4	4000	1:1 <	50	B, C	55	94
MS.033.SL200	SL / ZL-200 / 250,SL-2500Y	RADIAL SUBSPINDLE	ER-32	5	4000	1:1 <	50	B, C	55	94
MS.008.SL200	SL / ZL-200 / 250,SL-2500Y	FACE/SUB-SPINDLE	ER-25/25	6	4000	1:1 ><	50	B, C	55	90
MS.000.SL300	SL-300	AXIAL	ER-32	1	4000	1:1 >	50	A, B, C	59	
MS.021.SL300	SL-300	ADJ ANGLE	ER-25	2	4000	1:1 <	25	B	94	86
MS.030.SL300	SL-300	SAW-MILL	Upon request	3	3000	1:1 <	30	B, C	70	
MS.010.SL300	SL-300	RADIAL	ER-32	4	4000	1:1 <	50	B, C	40	72,5
MS.033.SL300	SL-300	RADIAL SUBSPINDLE	ER-32	5	4000	1:1 <	50	B, C	40	72,5
MS.008.SL300	SL-300	FACE/SUB-SPINDLE	ER-25/25	6	4000	1:1 ><	50	B, C	40	80

OTHER MODELS PLEASE ASK

© MADAULA SA. SUBJECT TO CHANGE WITHOUT NOTICE

**OPTION CODE**

- A** OPTION - INTERNAL COOLANT
- B** OPTION - SPEED INCREASING
- C** OPTION - SPEED REDUCTION

- D** OPTION - RADIAL TOOL REVERSES FOR SUB-SPINDLE
- >** CW INPUT = CW OUTPUT
- <** CW INPUT = CCW OUTPUT





# NAKAMURA

TW-10, SC150, SC250, WT-20, WT-250,  
TMC18, WTW-150, WTS-150

FIGURE 1

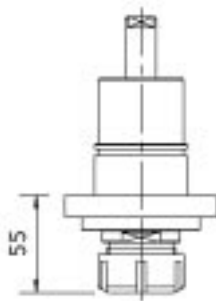


FIGURE 2

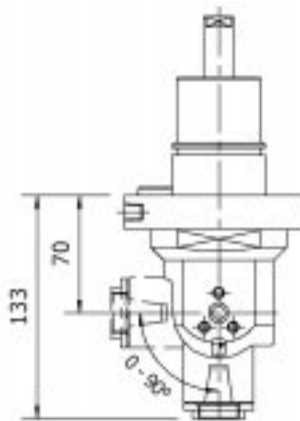


FIGURE 3

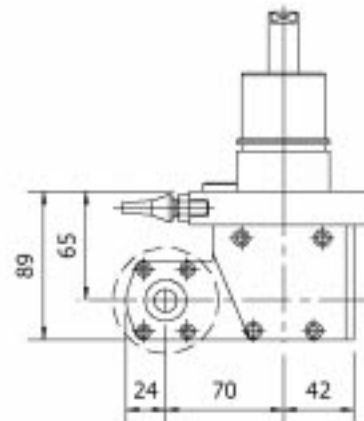


FIGURE 4

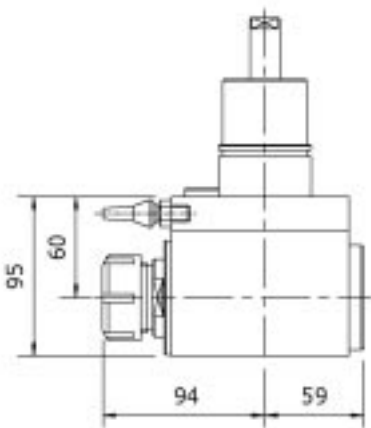


FIGURE 5

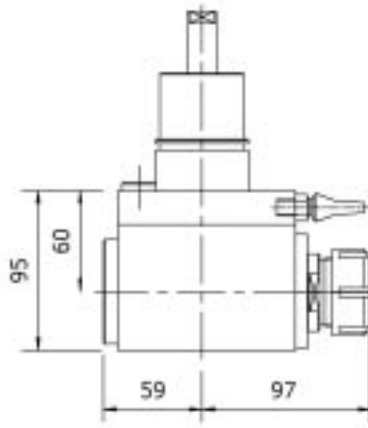
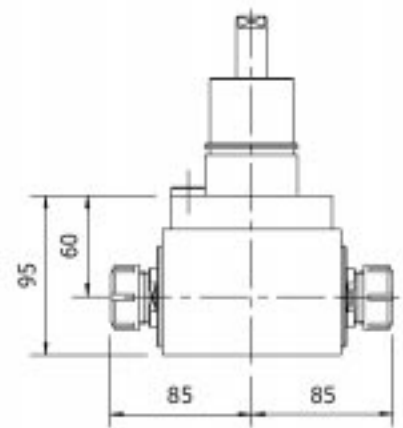


FIGURE 6



Order Code	MODEL	Tool Style	Spindle	Figure	MAX RPM	GearRatio	Nm	Option
NK.000.TW10	TW-10, SC150, SC250, WT-250, TMC18	AXIAL	ER-25	1	5000	1:1 >	50	A, B, C
NK.021.TW10	TW-10, SC150, SC250, WT-250, TMC18	ADJ ANGLE	ER-16	2	5000	1:1 <	18	B
NK.030.TW10	TW-10, SC150, SC250, WT-250, TMC18	SAW-MILL	Upon request	3	3000	1:1 <	30	B, C
NK.010.TW10	TW-10, SC150, SC250, WT-250, TMC18	RADIAL	ER-32	4	4000	1:1 <	50	B, C
NK.010.TW10	TW-10, SC150, SC250, WT-250, TMC18	RADIAL	ER-25	4	5000	1:1 >	50	B, C
NK.033.TW10	TW-10, SC150, SC250, WT-250, TMC18	RADIAL SUBSPINDLE	ER-25	5	5000	1:1 <	50	B, C
NK.008.TW10	TW-10, SC150, SC250, WT-250, TMC18	FACE/SUB-SPINDLE	ER-20/20	6	5000	1:1 <>	50	B, C

OTHER MODELS PLEASE ASK © MADAULA SA. SUBJECT TO CHANGE WITHOUT NOTICE WTW150, WTS150: SOME DIMENSIONS CHANGE

**OPTION CODE**

- A** OPTION - INTERNAL COOLANT
- B** OPTION - SPEED INCREASING
- C** OPTION - SPEED REDUCTION
- D** OPTION - RADIAL TOOL REVERSES FOR SUB-SPINDLE
- >** CW INPUT = CW OUTPUT
- <** CW INPUT = CCW OUTPUT





# NAKAMURA

TW-20, SC300  
TW-30, SC450, STW-40

FIGURE 1

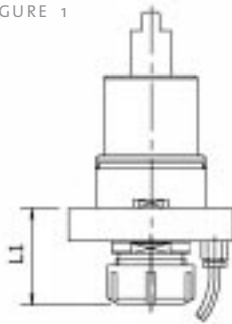


FIGURE 2

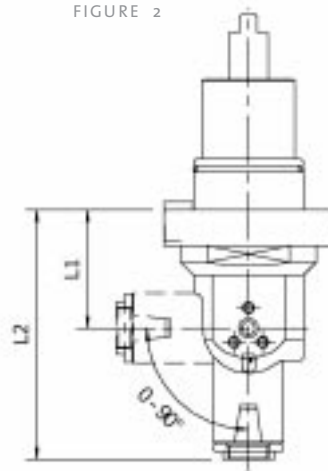


FIGURE 3

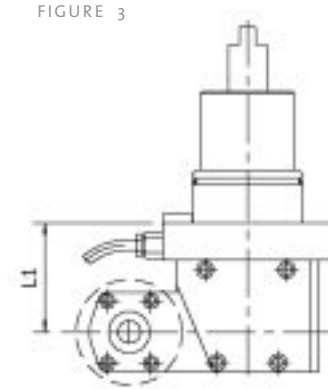


FIGURE 4

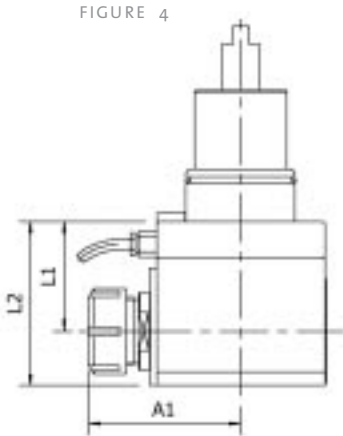


FIGURE 5

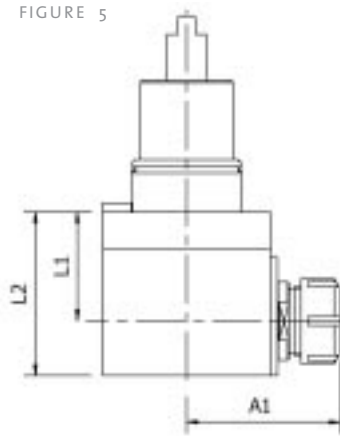
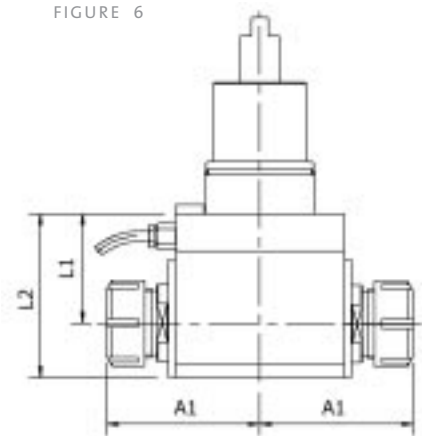


FIGURE 6



Order Code	MODEL	Tool Style	Spindle	Figure	MAX RPM	GearRatio	Nm	Option	L1	L2	A1
NK.000.TW20	TW-20 / SC300	AXIAL	ER-32	1	4000	1:1 >	50	A, B, C	55		
NK.021.TW20	TW-20 / SC300	ADJ ANGLE	ER-16	2	4000	1:1 <	18	B	49	112	
NK.030.TW20	TW-20 / SC300	SAW-MILL	Upon request	3	3000	1:1 <	30	B, C	65		
NK.010.TW20	TW-20 / SC300	RADIAL	ER-32	4	4000	1:1 <	50	B, C	65	33	87,5
NK.033.TW20	TW-20 / SC300	RADIAL SUBSPINDLE	ER-32	5	4000	1:1 <	50	B, C	65	33	87,5
NK.008.TW20	TW-20 / SC300	FACE/SUB-SPINDLE	ER-25/25	6	4000	1:1 ><	40	B, C	65	40	88
NK.000.TW30	TW-30 / SC450	AXIAL	ER-40	1	4000	1:1 >	100	A, B, C	76		
NK.021.TW30	TW-30 / SC450	ADJ ANGLE	ER-25	2	4000	1:1 <	30	B	49	139	
NK.030.TW30	TW-30 / SC450	SAW-MILL	Upon request	3	3000	1:1 <	50	B, C	90		
NK.010.TW30	TW-30 / SC450	RADIAL	ER-40	4	4000	1:1 <	100	B, C	90	130	80

OTHER MODELS PLEASE ASK

© MADAULA SA. SUBJECT TO CHANGE WITHOUT NOTICE



**OPTION CODE**

- A** OPTION - INTERNAL COOLANT
- B** OPTION - SPEED INCREASING
- C** OPTION - SPEED REDUCTION

- D** OPTION - RADIAL TOOL REVERSES FOR SUB-SPINDLE
- >** CW INPUT = CW OUTPUT
- <** CW INPUT = CCW OUTPUT



# OKUMA

LB-10M, LB-200M  
LB-15M, LU-15M, LR-15  
LB-300M, CAPTAIN L370-M

FIGURE 1

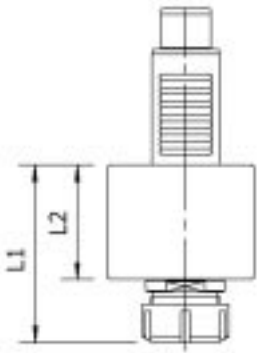


FIGURE 2

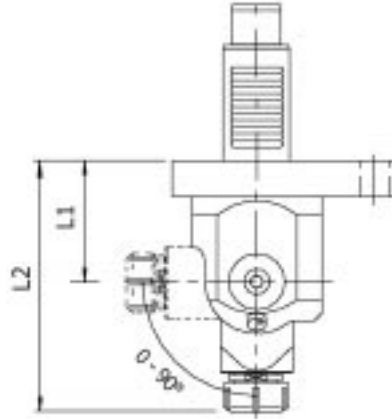


FIGURE 3

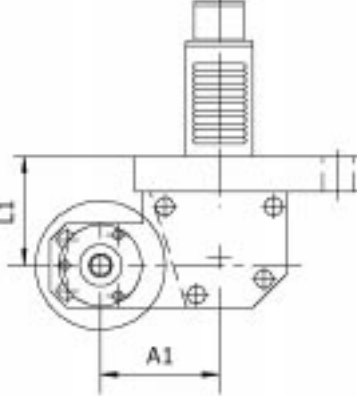


FIGURE 4

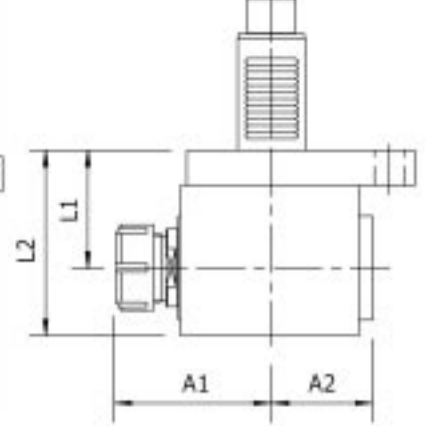


FIGURE 5

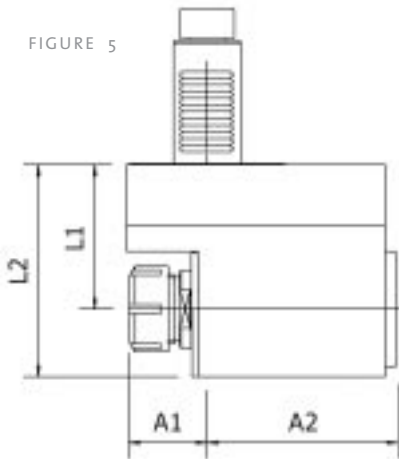


FIGURE 6

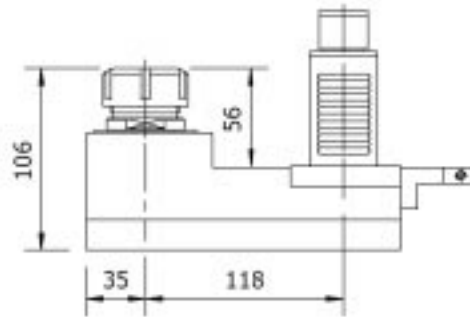
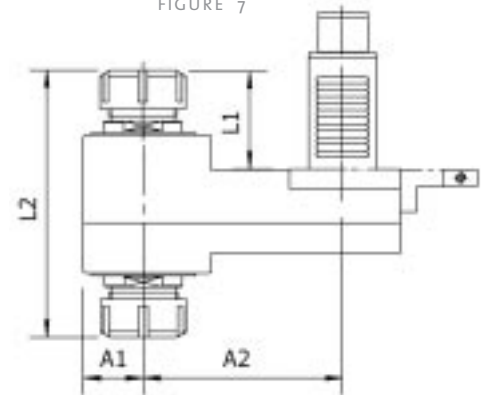


FIGURE 7



Order Code	MODEL	Tool Style	Spindle	Figure	MAX RPM	GearRatio	Nm	Option	L1	L2	A1	A2
OK.000.LB200	LB-200M, LB-10M	AXIAL	ER-25	1	6000	1:1 >	30	A, B, C	75	106		
OK.021.LB200	LB-200M, LB-10M	ADJ ANGLE	ER-16	2	6000	1:1 <	18	B, D	56	119		
OK.030.LB200	LB-200M, LB-10M	SAW-MILL	Upon request	3	3000	1:1 <	30	B, C	70		70	
OK.011.LB200	LB-200M, LB-10M	RADIAL SET-BACK	ER-25	5	4000	1:1 <	30	A, B, C	65	95	35	85
OK.033.LB200	LB-200M, LB-10M	FACE/SUB-SPINDLE	ER-20/20	7	4000	1:1 <>	30	A, B, C	30	115	30	110
OK.000.LB300	LB-300M, LB-15M, LU-15M	AXIAL	ER-32	1	5000	1:1 >	50	A, B, C	103	68		
OK.021.LB300	LB-300M, LB-15M, LU-15M	ADJ ANGLE	ER-25	2	5000	1:1 <	25	B, D	79	169		
OK.030.LB300	LB-300M, LB-15M, LU-15M	SAW-MILL	Upon request	3	3000	1:1 <	50	B, C	65		70	
OK.010.LB300	LB-300M, LB-15M, LU-15M	RADIAL	ER-32	4	5000	1:1 <	50	A, B, C	70	110	90	60
OK.011.LB300	LB-300M, LB-15M, LU-15M	RADIAL SET-BACK	ER-32	5	5000	1:1 >	50	A, B, C	85	125	40	105
OK.033.LB300	LB-300M, LB-15M, LU-15M	RADIAL SUBSPINDLE	ER-32	6	5000	1:1 <	50	A, B, C				
OK.008.LB300	LB-300M, LB-15M, LU-15M	FACE/SUB-SPINDLE	ER-32/32	7	5000	1:1 <>	50	A, B, C	56	151	35	118

OTHER MODELS PLEASE ASK © MADAULA SA. SUBJECT TO CHANGE WITHOUT NOTICE

**OPTION CODE**

- A** OPTION - INTERNAL COOLANT
- B** OPTION - SPEED INCREASING
- C** OPTION - SPEED REDUCTION
- D** OPTION - RADIAL TOOL REVERSES FOR SUB-SPINDLE
- >** CW INPUT = CW OUTPUT
- <** CW INPUT = CCW OUTPUT



# OKUMA

## LB-25M, LU-25M, LB-400M, CAPTAIN L470-M LB-35M, LU-35M

FIGURE 1

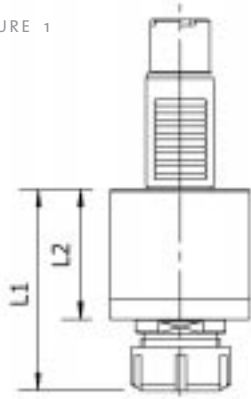


FIGURE 2

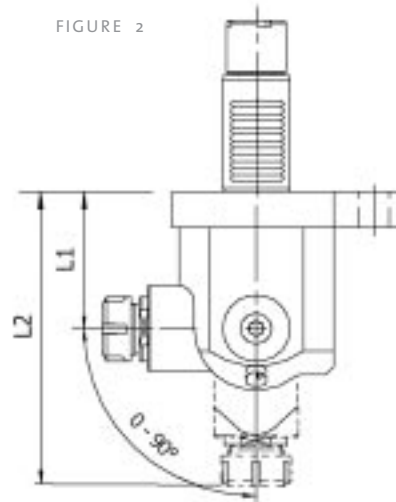


FIGURE 3

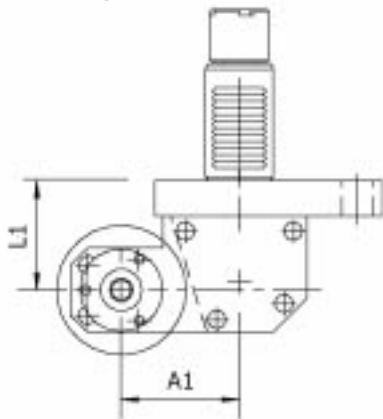
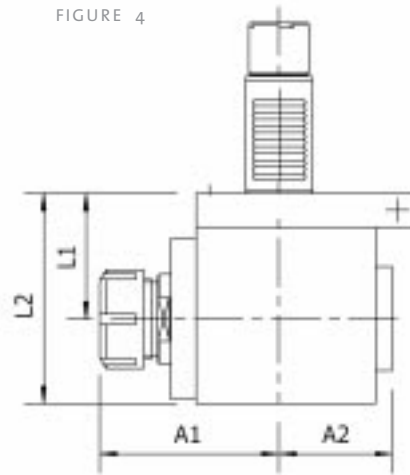


FIGURE 4



Order Code	MODEL	Tool Style	Spindle	Figure	MAX RPM	GearRatio	Nm	Option	L1	L2	A1	A2
OK.000.LB400	LB-400M, LB-25M, LU-25M	AXIAL	ER-40	1	4000	1:1 >	50	A, B, C	115	77		
OK.021.LB400	LB-400M, LB-25M, LU-25M	ADJ ANGLE	ER-25	2	4000	1:1 <	25	B, D	79	169		
OK.030.LB400	LB-400M, LB-25M, LU-25M	SAW-MILL	Upon request	3	2500	1:1 <	50	B, C	65		70	
OK.010.LB400	LB-400M, LB-25M, LU-25M	RADIAL	ER-40	4	4000	1:1 <	50	A, B, C	75	125	100	67
OK.000.LB35	LB-35M	AXIAL	ER-40	1	4000	1:1 >	50	A, B, C	140	83		
OK.021.LB35	LB-35M	ADJ ANGLE	ER-25	2	4000	1:1 <	25	B, D	85	190		
OK.030.LB35	LB-35M	SAW-MILL	Upon request	3	2500	1:1 <	50	B, C	115		70	
OK.010.LB35	LB-35M	RADIAL	ER-40	4	4000	1:1 <	50	A, B, C	68	110	100	67

OTHER MODELS PLEASE ASK

© MADAULA SA. SUBJECT TO CHANGE WITHOUT NOTICE

**OPTION CODE**

- A** OPTION - INTERNAL COOLANT
- B** OPTION - SPEED INCREASING
- C** OPTION - SPEED REDUCTION

- D** OPTION - RADIAL TOOL REVERSES FOR SUB-SPINDLE
- >** CW INPUT = CW OUTPUT
- <** CW INPUT = CCW OUTPUT





# OKUMA

LT-10M  
LT-15M  
LT-25M

FIGURE 1

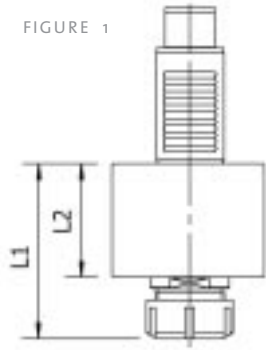


FIGURE 2

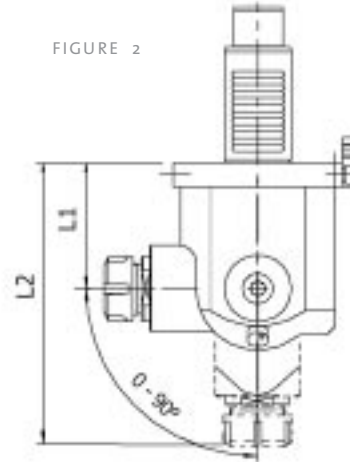


FIGURE 3

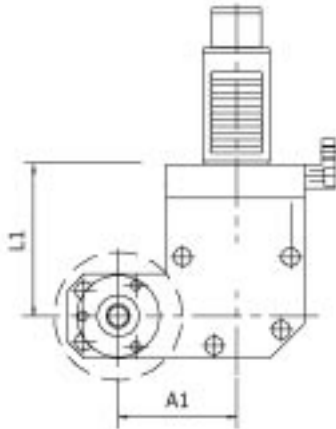
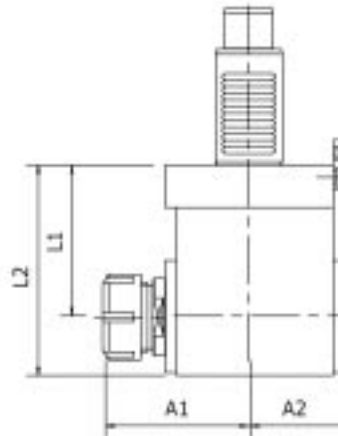


FIGURE 4



Order Code	MODEL	Tool Style	Spindle	Figure	MAX RPM	GearRatio	Nm	Option	L1	L2	A1	A2
OK.000.LT10	LT-10M	AXIAL	ER-25	1	6000	1:1 >	30	A, B, C	106	75		
OK.021.LT10	LT-10M	ADJ ANGLE	ER-16	2	6000	1:1 <	18	B, D	56	119		
OK.030.LT10	LT-10M	SAW-MILL	Upon request	3	3000	1:1 <	30	B, C, D	75		70	
OK.010.LT10	LT-10M	RADIAL	ER-25	4	6000	1:1 <	30	A, B, C, D	85	117	69	59
OK.000.LT15	LT-15M	AXIAL	ER-32	1	5000	1:1 >	50	A, B, C	103	68		
OK.021.LT15	LT-15M	ADJ ANGLE	ER-25	2	5000	1:1 <	25	B, D	73	163		
OK.030.LT15	LT-15M	SAW-MILL	Upon request	3	3000	1:1 <	50	B, C, D	90		70	
OK.010.LT15	LT-15M	RADIAL	ER-32	4	5000	1:1 <	50	A, B, C, D	90	125	85	60
OK.000.LT25	LT-25M	AXIAL	ER-32	1	4000	1:1 >	50	A, B, C	103	68		
OK.021.LT25	LT-25M	ADJ ANGLE	ER-25	2	4000	1:1 <	25	B, C, D	73	163		
OK.030.LT25	LT-25M	SAW-MILL	Upon request	3	2500	1:1 <	50	B, C, D	90		70	
OK.010.LT25	LT-25M	RADIAL	ER-32	4	4000	1:1 <	50	A, B, C, D	90	125	85	60

OTHER MODELS PLEASE ASK © MADAULA SA. SUBJECT TO CHANGE WITHOUT NOTICE

- OPTION CODE**
- A** OPTION - INTERNAL COOLANT
  - B** OPTION - SPEED INCREASING
  - C** OPTION - SPEED REDUCTION
  - D** OPTION - RADIAL TOOL REVERSES FOR SUB-SPINDLE
  - >** CW INPUT = CW OUTPUT
  - <** CW INPUT = CCW OUTPUT

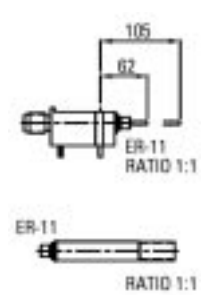
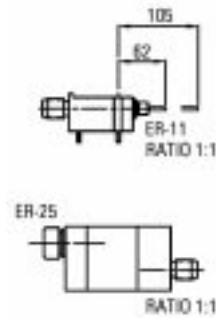
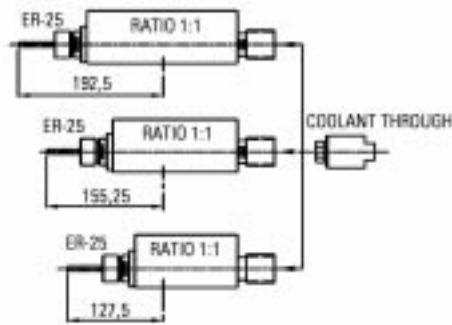


# TORNOS

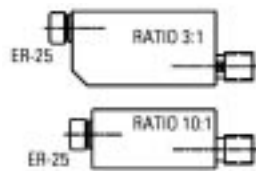
DECO 2000-20 / 13 / 10 / 7

DECO 20                                  DECO 13                                  DECO 10/7

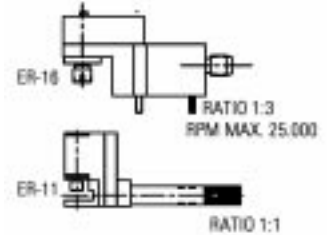
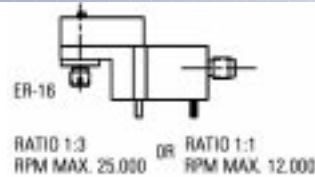
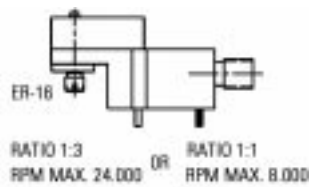
01 AXIAL



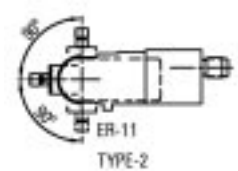
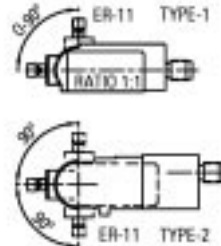
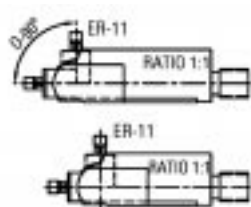
02 AXIAL SPEED REDUCER



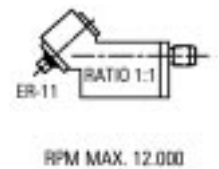
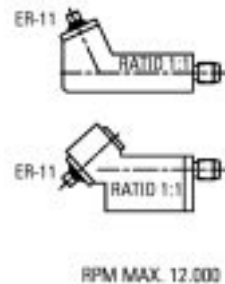
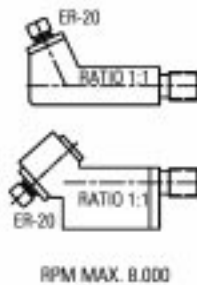
03 RADIAL SPEED INCREASING



04 ADJUSTABLE ANGLE



05 SPECIAL

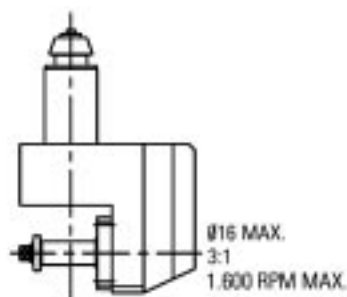
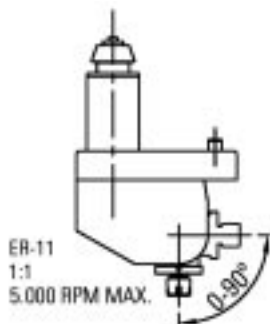
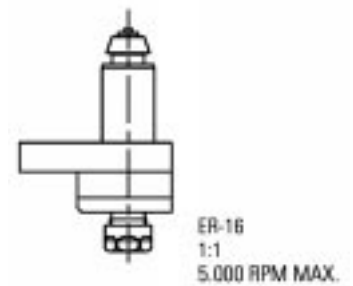
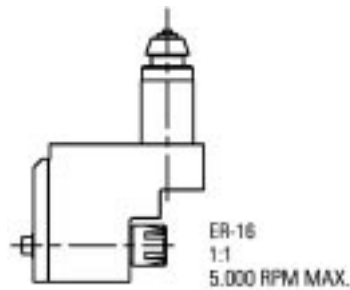
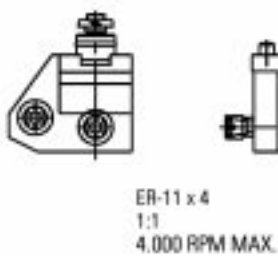
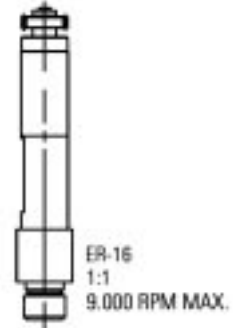
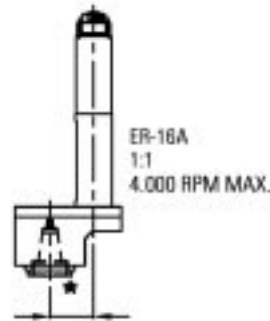
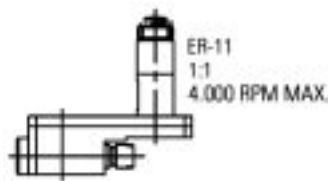
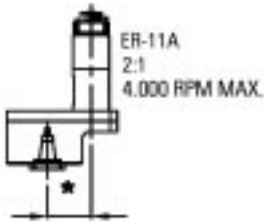
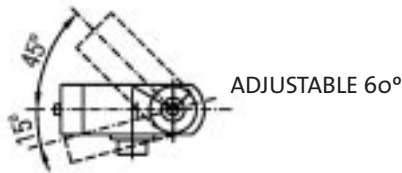
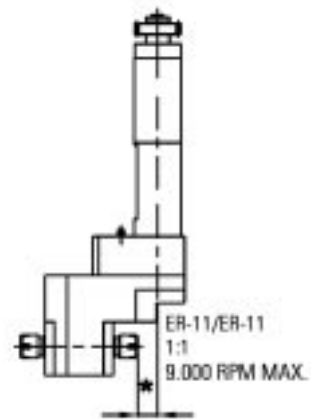
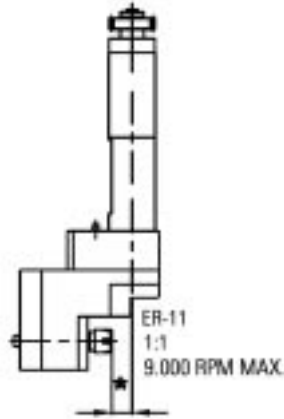
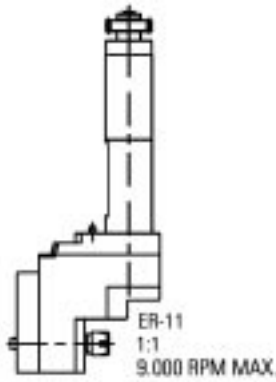


Ask for specific literature



# CITIZEN

L-16 / 20, L32  
M12 / 16, M20 / 32



\*Upon request





High precision guaranteed  
Precision, rigidity, reliability together with  
technology in continuous improvement,  
are the qualities of our products both in  
standard and special construction.



#### Hohe Präzision garantiert

Präzision, Starrheit und Zuverlässigkeit  
in Verbindung mit ständiger  
technologischer Weiterentwicklung  
sind die Eigenschaften unserer  
Produkte, sowohl Standard als auch  
Sonderausführung.

#### Haute precision garantie

Grâce à notre technologie de pointe et  
innovatrice, les principales qualités de  
nos produits sont la précision, la rigidité  
et la fiabilité, celles-ci étant appliquées  
sur notre production aussi bien standard  
que spéciale.

#### Alta precisión garantizada

Precisión, rigidez, fiabilidad unidos a  
tecnología en constante avance, son  
las cualidades de nuestros productos,  
tanto en ejecución estándar como  
especial.



**MADAULA S.A.**®

Rec del Moli, 11-17  
08105 - Sant Fost de Campsentelles  
BARCELONA - SPAIN

Tel. 34 93 593 36 00  
Fax. 34 93 570 07 99

www.madaula.com  
e-mail: comercial@madaula.com

Madaula S.A.R.L.  
27, Rue de la Semène  
42660 - Saint Genest Malifaux  
FRANCE

Tel. 33-04 77 51 76 72  
Fax. 33-04 77 51 29 67

e-mail: madaulafrance@madaula.com

