

PRECISION & QUALITY

RBH



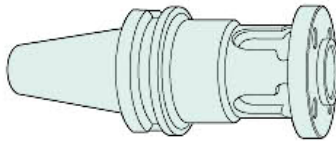
HIGH PRECISION MODULAR BORING SYSTEMS
高精密組合式搪刀系列





PRECISION & QUALITY

BST系列
BST Boring System



搪刀刀桿
Taper Shank



P22

P13

200以上CBH組合式大徑微調精搪刀
Large Diameter Finish Boring Head

P11

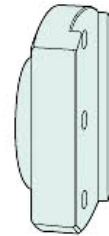
200以上RBH-LA組合式大徑粗搪刀
Large Diameter Rough Boring Head

P5

RBH120,160可調式雙刃粗搪刀
RBH Indexable Rough Boring Head

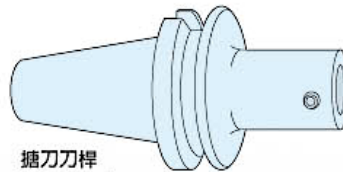
P9

200以上RBH可調式大徑雙刃粗搪刀
RBH Indexable Rough Boring Head



連接盤
Flange

LBK系列
LBK Boring System



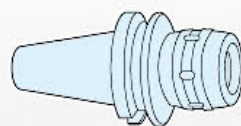
搪刀刀桿
Taper Shank

P22

P21

異徑搪刀延長桿
Extension(Reducing)

等徑搪刀延長桿
Extension(Constant Diameter)



直筒式立銑刀夾頭
Power Chuck Holder

P20

搪刀桿專用套筒
Collet

P19

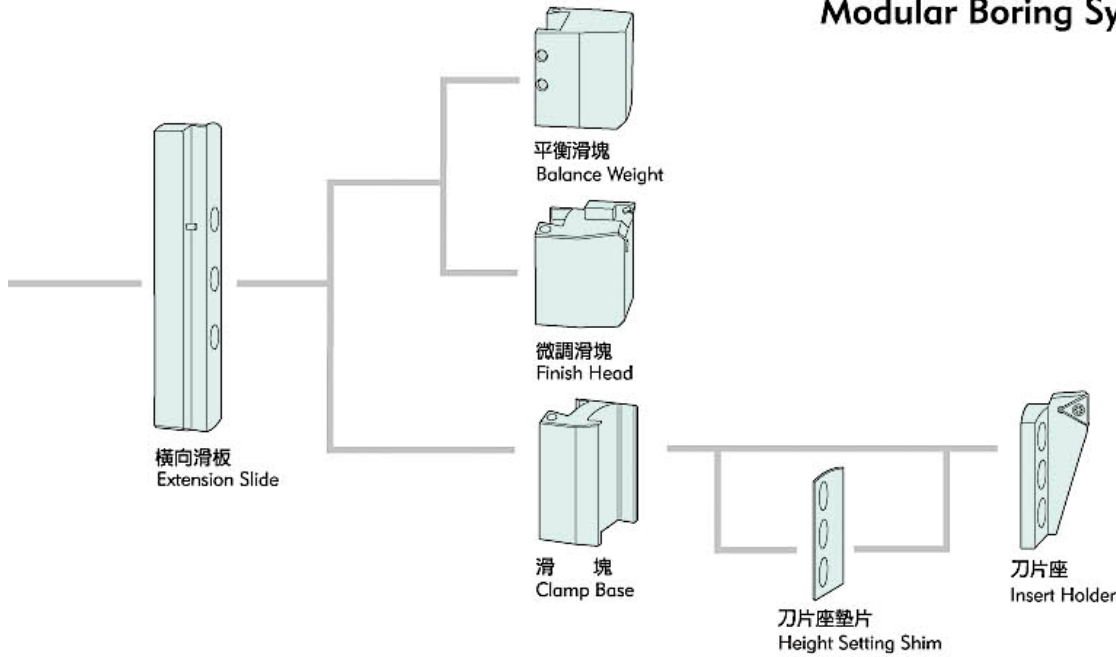
超硬整體碳化鎢製搪刀桿
Super Hard Solid Tungsten Carbide Boring Bar

P20 直柄搪刀桿 Straight Shank Boring Bar



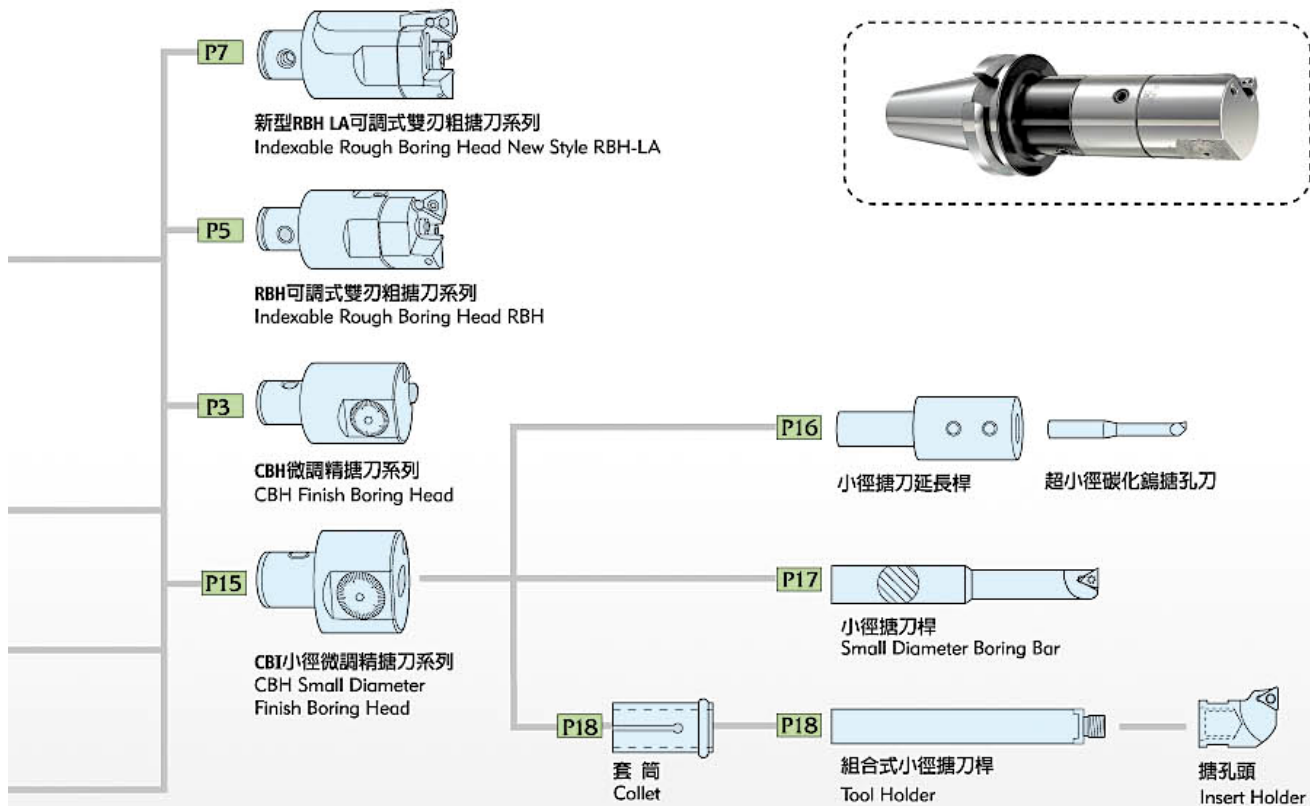
BST/LBK SERIES

搪刀搭配系統 Modular Boring Systems



P R O F E S S I O N A L T O O L S

BORING CUTTER SYSTEM





PRECISION & QUALITY

CBH微調精搪刀系列 《搪孔範圍Ø20 - Ø202mm》

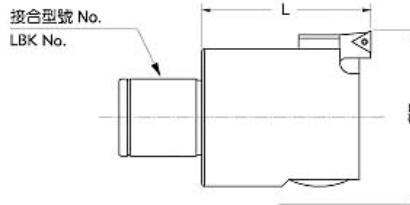
CBH Finish Boring Head 《Boring Range from Ø20 - Ø202mm》

特色

1. CBH精搪刀適用於精切削搪孔，工作範圍Ø20~Ø202mm均可搭配選用。
2. 調整刻度為圓周50等分，每格調整尺寸為直徑0.01mm，另有副尺可作更精細之調整。
3. 精密導程螺絲位於內部，不受切屑、磨耗、生鏽等影響，具有內部潤滑，精準耐用。
4. 內藏式水孔，刀尖直接冷卻，刀片壽命長。
5. 調整伸縮部為方型結構，雙支撐面固定，所以切削穩固且剛性大。

Features

1. CBH finish boring head is suitable for finish boring with working ranges from Ø20mm to Ø202mm on diameter.
2. The dial has been graduated into 50 divisions, each of which is 0.01mm on diameter. Available is a sub-dial for finer adjustment.
3. High precision internal lead screw with inner lubrication is free from the effects of chip, featuring high durability.
4. Coolant nozzle easily cools the insert elongating its working life.
5. Cartridge unit is housed in a square structure with two face support, proving high stability and rigidity.

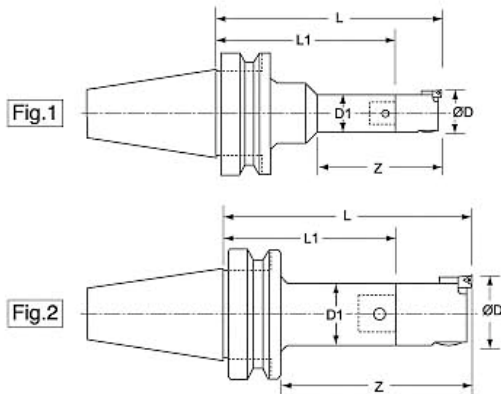


專利號碼	Patents
(中國)	ZL 03 2 76491.x
China	ZL 03 2 08876.0
(台灣)	Patent No.217175
Taiwan	Patent No.221678

規格 Specifications:

搪頭型號 Boring Head Type	接合型號 LBK No.	搪孔範圍ØD mm Boring Range	搪頭長度 mm Length	重量 kg Weight	刀片規格 / 螺絲 / 刀片扳手 Insert/Clamping Screw/Wrench
CBH20	LBK1	20-26	35	0.1	TB06/M2/T6 TP08/M2.2/T7 TC09/M2.2/T7
CBH25	LBK2	25-33	40	0.2	
CBH32	LBK3	32-42		0.3	
CBH40	LBK4	40-55	50	0.5	
CBH52	LBK5	52-75	60	1	TP08/M2.2/T7 TP09/M2.5/T8 TC11/M2.5/T8
CBH68	LBK6	68-102	72	2	
CBH100		100-152		2.9	
CBH150		150-202		4.2	

CBH微調精搪刀+LBK刀柄 (MAS 403BT) CBH Finish Boring Head+LBK Shank (MAS 403BT)



CBH + LBK CBH微調精搪刀組合系列

規格 Specifications:

型號 Type	樣式 Fig.	搪孔範圍 Ø(Dmm)	有效長 Z	組合內容 Tool Connection		接合型號 LBK No.	全長 L	刀桿長 L1	刀桿外徑 D1	重量 KG	
				LBK刀桿 LBK shank	CBH刀頭 CBH boring head						
BT30-CBH20-105	2	20-26	75	BT30-LBK1-70	CBH20	1	105	70	19	0.6	
BT30-CBH25-120		25-33	90	BT30-LBK2-80	CBH25	2	120	80	24	0.8	
BT30-CBH32-120		32-42		BT30-LBK3-80	CBH32	3		31	1.0		
BT30-CBH40-120		40-55		BT30-LBK4-70	CBH40	4		70	39	1.3	
BT30-CBH52-120		52-75		BT30-LBK5-60	CBH52	5		50	1.8		
BT30-CBH68-130		68-102	100	BT30-LBK6-60	CBH68	6	130	60	64	3.0	
BT40-CBH20-110	2	20-26	75	BT40-LBK1-75	CBH20	1	110	75	19	1.1	
BT40-CBH20-140			105	BT40-LBK1-105			140	105		1.3	
BT40-CBH25-125		25-33	90	BT40-LBK2-85	CBH25	2	125	85	24	1.3	
BT40-CBH25-155			120	BT40-LBK2-115			155	115	1.6		
BT40-CBH32-135			32-42	100			BT40-LBK3-95	CBH32	3	135	95
BT40-CBH32-165		130		BT40-LBK3-125	165	125	1.8				
BT40-CBH32-195		160		BT40-LBK3-155	195	155	2.0				
BT40-CBH40-135		40-55	100	BT40-LBK4-85	CBH40	4	135	85	39	1.8	
BT40-CBH40-180			145	BT40-LBK4-130			180	130		2.4	
BT40-CBH40-225			190	BT40-LBK4-175			225	175		2.7	
BT40-CBH52-135		52-75	100	BT40-LBK5-75	CBH52	5	135	75	50	2.3	
BT40-CBH52-185			150	BT40-LBK5-125			185	125		3.3	
BT40-CBH52-235			200	BT40-LBK5-175			235	175		4.0	
BT40-CBH68-135		68-102	100	BT40-LBK6-65	CBH68	6	135	65	64	3.3	
BT40-CBH68-185			150	BT40-LBK6-115			185	115		4.7	
BT40-CBH68-235			200	BT40-LBK6-165			235	165		5.9	
BT40-CBH100-135		100-152	100	BT40-LBK6-65	CBH100	6	135	65	64	4.2	
BT40-CBH100-185			150	BT40-LBK6-115			185	115		5.6	
BT40-CBH100-235			200	BT40-LBK6-165			235	165		6.8	
BT40-CBH150-135		150-202	100	BT40-LBK6-65	CBH150	6	135	65	64	5.5	
BT40-CBH150-185			150	BT40-LBK6-115			185	115		6.9	
BT40-CBH150-235			200	BT40-LBK6-165			235	165		8.1	
BT50-CBH20-150		1	20-26	75	BT50-LBK1-115	CBH20	1	150	115	31/19	4.1
BT50-CBH20-180				105	BT50-LBK1-145			180	145		4.2
BT50-CBH25-150		2	25-33	105	BT50-LBK2-110	CBH25	2	150	110	24	4.1
BT50-CBH25-180				135	BT50-LBK2-140			180	140		4.2
BT50-CBH32-165			32-42	120	BT50-LBK3-125	CBH32	3	165	125	31	4.4
BT50-CBH32-195				150	BT50-LBK3-155			195	155		4.5
BT50-CBH40-165			40-55	120	BT50-LBK4-115	CBH40	4	165	115	39	4.8
BT50-CBH40-195				150	BT50-LBK4-145			195	145		4.9
BT50-CBH40-225	180			BT50-LBK4-175	225			175	5.3		
BT50-CBH40-255	210			BT50-LBK4-205	225			205	5.4		
BT50-CBH52-165	52-75		120	BT50-LBK5-105	CBH52	5	165	105	50	5.5	
BT50-CBH52-240			195	BT50-LBK5-180			240	180		6.5	
BT50-CBH52-300			255	BT50-LBK5-240			300	240		7.2	
BT50-CBH52-360	1		255	BT50-LBK5-300			360	300	64/50	8.6	
BT50-CBH68-165	2	68-102	120	BT50-LBK6-95	CBH68	6	165	95	64	6.5	
BT50-CBH68-240			195	BT50-LBK6-170			240	170		8.3	
BT50-CBH68-300			255	BT50-LBK6-230			300	230		9.6	
BT50-CBH68-360			315	BT50-LBK6-290			360	290		11.0	
BT50-CBH68-420			375	BT50-LBK6-350			420	350		90/64	15.5
IBT50-CBH68-420	1	375	IBT50-LBK6-350			420	350		13.2		
BT50-CBH100-165	2	100-152	120	BT50-LBK6-95	CBH100	6	165	95	64	7.4	
BT50-CBH100-240			195	BT50-LBK6-170			240	170		9.2	
BT50-CBH100-300			255	BT50-LBK6-230			300	230		10.5	
BT50-CBH100-360			315	BT50-LBK6-290			360	290		11.9	
BT50-CBH100-420	1	375	BT50-LBK6-350			420	350	90/64	16.4		
IBT50-CBH100-420	1	375	IBT50-LBK6-350			420	350		14.1		
BT50-CBH150-165	2	150-202	120	BT50-LBK6-95	CBH150	6	165	95	64	8.7	
BT50-CBH150-240			195	BT50-LBK6-170			240	170		10.5	
BT50-CBH150-300			255	BT50-LBK6-230			300	230		11.8	
BT50-CBH150-360			315	BT50-LBK6-290			360	290		13.2	
BT50-CBH150-420			1	375			BT50-LBK6-350				420
IBT50-CBH150-420	2	375	IBT50-LBK6-350			420	350	64	15.4		

★IBT是專為抑制搪孔共振而改良之專用刀桿 ★IBT is the improved type dedicated to eliminating resonance in boring.



PRECISION & QUALITY

RBH可調式雙刃粗搪刀系列《搪孔範圍Ø25 - Ø204mm》

RBH Indexable Twin-bit Rough Boring Head 《Boring Range from Ø25 - Ø204mm》

特色

1. 適用單刃搪孔, 雙刃搪孔及高低階搪孔。搪孔範圍Ø25~Ø204mm。
2. 新型刀刃滑座設計, 刀背補強。加工時, 滑座承受的兩個作用力相互抵消, 產生最大剛性和切削力。適合各形態的搪孔作業。
3. 可依各種不同加工需求, 輕易調整搪刀, 做少量多樣的加工。加工深度可配合延長桿延伸至所需長度。
4. 清晰的側邊刻度, 協助使用者輕易調整到所需的範圍, 無須在刀具設定儀上預設。
5. 最適合在各型切削中心機或搪床上配合使用, 並可搭配各種廠牌相同規格的指定刀片, 節省刀具研磨時間並大幅增加搪孔效率。
6. 專利高低段差設計, 平刃或高低刃均可採用。

Features

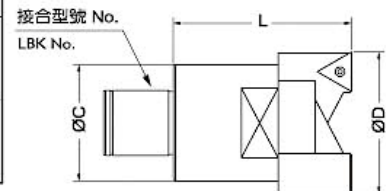
1. The head is suitable for single bit boring, twin-bit boring and step boring with working diameter from Ø25mm to Ø204mm on diameter.
2. New cartridge style with built-up rib. The pressure imposed on both cartridges counteracts producing highest rigidity and cutting efficiency, most suitable for a variety of borings.
3. Boring head can be easily adjusted to different boring needs for machining on demand. Boring depth can be extended by tool connection.
4. Clear side division provides a convenient adjustment without using a tool pre-setter.
5. Most suitable for boring on various machine centers or boring mills. Universal design accepts inserts of any brands, which will reduce tool grinding and greatly improve boring performance.
6. Patented step boring design; suitable for both level boring and step boring.

規格 Specifications:

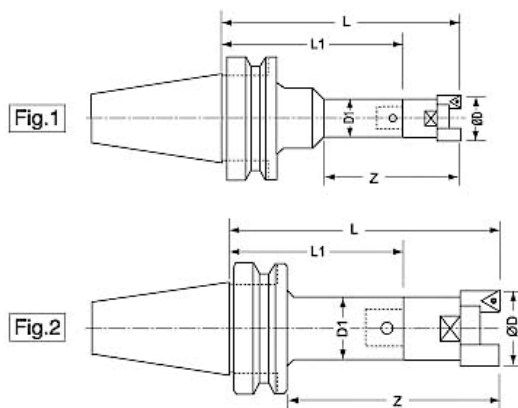
搪頭型號 Boring Head Type	接合型號 LBK No.	搪孔範圍Dmm Boring Range	L mm	C mm	刀片規格 Insert	重量 kg Weight
RBH25-33-C	LBK2	25~ 33	45	24	CCMT060204	0.15
RBH32-42-C	LBK3	32~ 42	55	31	CCMT060204	0.3
RBH32-42-T					TCMT110204	
RBH40-55-C	LBK4	40~ 55	65	39	CCMT09T304	0.5
RBH40-55-T					TCMT16T304	
RBH40-55-S					SCMT09T304	
RBH52-70-C	LBK5	52~ 70	75	50	CCMT09T304	1
RBH52-70-T					TCMT16T304	
RBH52-70-S					SCMT09T304	
RBH68-92-C	LBK6	68~ 92	85	64	CCMT120408	2
RBH68-92-T					TCMT16T304	
RBH68-92-S					SCMT120404	
RBH90-122-C					CCMT120408	
RBH90-122-T					TCMT220408	
RBH90-122-S					SCMT120404	
RBH120-164-C	BST Series	120~ 164	95	100	CCMT120408	3.8
RBH120-164-T					TCMT220408	
RBH120-164-S					SCMT120404	
RBH160-204-C					CCMT120408	
RBH160-204-T					TCMT220408	
RBH160-204-S					SCMT120404	



專利號碼 Patents
 (中國) ZL 02 2 08906.3
 China ZL 01 2 32355.1
 Patent No.188042
 (台灣) Patent No.164277
 Taiwan Patent No.180593



RBH可調式雙刃粗搪刀+LBK刀柄 (MAS 403BT) RBH Indexable Twin-bit Rough Boring Head + LBK Shank (MAS 403BT)



RBH + LBK RBH雙刃粗搪刀組合系列

規格 Specifications:

型號 Type	樣式 Fig.	搪孔範圍 Ø(Dmm)	有效長 Z	組合內容 Tool Connection		接合型號 LBK No.	全長 L	刀桿長 L1	刀桿外徑 D1	重量 KG	
				LBK刀桿 LBK shank	RBH刀頭 RBH boring head						
BT30-RBH25-125	2	25-33	95	BT30-LBK2-80	RBH25	2	125	80	24	0.8	
BT30-RBH32-135		32-42	105	BT30-LBK3-80	RBH32	3	135		31	1.0	
BT30-RBH40-135		40-55		BT30-LBK4-70	RBH40	4		39	1.3		
BT30-RBH52-135		52-70		BT30-LBK5-60	RBH52	5		50	1.8		
BT30-RBH68-145		68-92	115	BT30-LBK6-60	RBH68	6	145	60	3.0		
BT30-RBH90-160		90-122	130		RBH90		160	64	3.9		
BT40-RBH25-130	2	25-33	95	BT40-LBK2-85	RBH25	2	130	85	24	1.3	
BT40-RBH25-160		125	115	BT40-LBK2-115	RBH25	2	160	115	24	1.6	
BT40-RBH32-150		32-42	115	BT40-LBK3-95	RBH32	3	150	95	31	1.5	
BT40-RBH32-180			145	BT40-LBK3-125			180	125		1.8	
BT40-RBH32-210			175	BT40-LBK3-155			210	155		2.0	
BT40-RBH40-150			115	BT40-LBK4-85			150	85		1.8	
BT40-RBH40-195		40-55	160	BT40-LBK4-130	RBH40	4	195	130	39	2.4	
BT40-RBH40-240			205	BT40-LBK4-175	240		175	2.7			
BT40-RBH52-150			115	BT40-LBK5-75	150		75	2.3			
BT40-RBH52-200		52-70	165	BT40-LBK5-125	RBH52	5	200	125	50	3.3	
BT40-RBH52-250			215	BT40-LBK5-175	250		175	4.0			
BT40-RBH68-150			115	BT40-LBK6-65	150		65	3.3			
BT40-RBH68-200		68-92	165	BT40-LBK6-115	RBH68	6	200	115	64	4.7	
BT40-RBH68-250			215	BT40-LBK6-165	250		165	5.9			
BT40-RBH90-165			130	BT40-LBK6-65	165		65	4.2			
BT40-RBH90-215		92-122	180	BT40-LBK6-115	RBH90	6	215	115	64	5.6	
BT40-RBH90-265			230	BT40-LBK6-165	265		165	6.8			
BT40-RBH120-165			120-164	130	BT40-BST-70		RBH120	BST		165	70
BT40-RBH160-165		160-204	130	BT40-BST-70	RBH160	165	70		95	8.0	
BT50-RBH25-155		2	25-33	105	BT50-LBK2-110	RBH25	2	155	110	24	4.1
BT50-RBH25-185				135	BT50-LBK2-140	185		140	4.2		
BT50-RBH32-180			32-42	130	BT50-LBK3-125	RBH32	3	180	125	31	4.4
BT50-RBH32-210				160	BT50-LBK3-155	210		155	4.5		
BT50-RBH40-180				130	BT50-LBK4-115	180		115	4.8		
BT50-RBH40-210	40-55		160	BT50-LBK4-145	RBH40	4	210	145	39	4.9	
BT50-RBH40-240			190	BT50-LBK4-175	240		175	5.3			
BT50-RBH40-270			220	BT50-LBK4-205	270		205	5.4			
BT50-RBH52-180			130	BT50-LBK5-105	180		105	5.5			
BT50-RBH52-255	52-70		205	BT50-LBK5-180	RBH52	5	255	180	50	6.5	
BT50-RBH52-315			265	BT50-LBK5-240	315		240	7.2			
BT50-RBH52-375			265	BT50-LBK5-300	375		300	8.6			
BT50-RBH68-180	2		68-92	130	BT50-LBK6-95	RBH68	6	180	95	64	6.5
BT50-RBH68-255				205	BT50-LBK6-170			255	170		8.3
BT50-RBH68-315				265	BT50-LBK6-230			315	230		9.6
BT50-RBH68-375				325	BT50-LBK6-290			375	290		11.0
BT50-RBH68-435				385	BT50-LBK6-350			435	350		15.5
IBT50-RBH68-435	1		385	IBT50-LBK6-350	IBT50-LBK6-350	6	435	350	90/64	13.2	
BT50-RBH90-195	2		90-122	145	BT50-LBK6-95	RBH90	6	195	95	64	7.4
BT50-RBH90-270				220	BT50-LBK6-170			270	170		9.2
BT50-RBH90-330				280	BT50-LBK6-230			330	230		10.5
BT50-RBH90-390				340	BT50-LBK6-290			390	290		11.9
BT50-RBH90-450	1		400	BT50-LBK6-350	BT50-LBK6-350	6	450	350	90/64	16.4	
IBT50-RBH90-450	2		400	IBT50-LBK6-350	IBT50-LBK6-350	6	450	350	64	14.1	
BT50-RBH120-195	2	120-164	150	BT50-BST-100	RBH120	BST	195	100	95	8.9	
BT50-RBH120-245			200	BT50-BST-150			245	150		10.6	
BT50-RBH120-295			250	BT50-BST-200			295	200		13.3	
BT50-RBH120-345			300	BT50-BST-250			345	250		15.3	
BT50-RBH120-395			350	BT50-BST-300			395	300		17.3	
BT50-RBH120-445			400	BT50-BST-350			445	350		19.3	
BT50-RBH120-495		450	BT50-BST-400	495	400	21.3					
BT50-RBH160-195		160-204	150	BT50-BST-100	RBH160	BST	195	100	95	13.3	
BT50-RBH160-245			200	BT50-BST-150			245	150		13.8	
BT50-RBH160-295			250	BT50-BST-200			295	200		14.3	
BT50-RBH160-345			300	BT50-BST-250			345	250		16.3	
BT50-RBH160-395			350	BT50-BST-300			395	300		18.3	
BT50-RBH160-445	400		BT50-BST-350	445			350	20.3			
BT50-RBH160-495	450	BT50-BST-400	495	400	22.3						

★IBT是專為抑制搪孔共振而改良之專用刀桿 ★IBT is the improved type dedicated to eliminating resonance in boring



PRECISION & QUALITY

新型RBH-LA可調式雙刃粗搪刀系列 《搪孔範圍Ø25 - Ø204mm》

Indexable Twin-bit Rough Boring Head RBH-LA 《Boring Range from Ø25 - Ø204mm》

特色

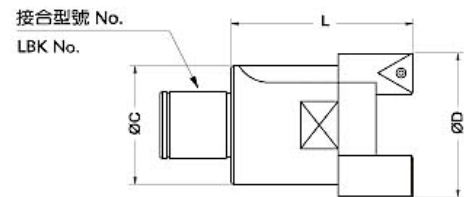
1. 刀片支持座厚度增加，剛性增強。
2. 內藏式水孔，直接冷卻，刀片壽命長。
3. 排屑槽設計，增加深孔排屑功能。
4. 連接壓板使刀頭與刀座一體，增加切削剛性。
5. 獨特高低段差設計，平刃或高低刃均可採用。

Features

1. Thickened cartridge with higher rigidity.
2. Coolant nozzle easily cools the insert elongating its working life.
3. Completed with chip pocket, improving chip flow of deep boring.
4. Clamp plate solidifies cartridges and head, upgrading cutting rigidity.
5. Patented step boring design; suitable for both level boring and step boring.

專利號碼 Patents

(中國) ZL 02 2 08906.3
 China ZL 01 2 32355.1
 (台灣) Patent No.188042
 Taiwan Patent No.180593



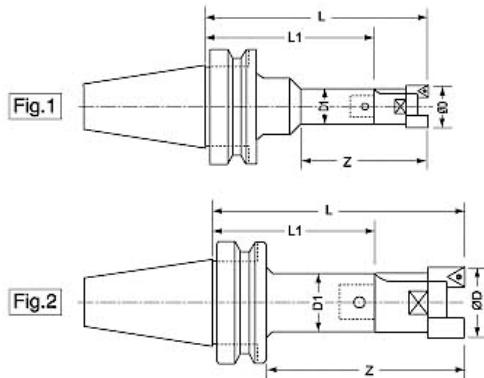
規格 Specifications:

Boring Head Type	接合型號 LBK No.	搪孔範圍D mm Boring Range	L mm	C mm	刀片規格 Insert		重量 kg Weight
					刀片規格 Insert	重量 kg Weight	
RBH25-35LA-C	LBK2	25~35	50	24	CCMT060204	0.15	
RBH32-45LA-C					TCMT110204		
RBH32-45LA-T	LBK3	32~45	60	31	CCMT09T304	0.6	
RBH40-55LA-C					TCMT16T304		
RBH40-55LA-S					SCMT09T304		
RBH52-75LA-C	LBK4	40~55	74	39	CCMT09T304	1	
RBH52-75LA-T					TCMT16T304		
RBH52-75LA-S					SCMT09T304		
RBH68-100LA-C	LBK5	52~75	80	50	CCMT120408	2.5	
RBH68-100LA-T					TCMT16T304		
RBH68-100LA-S					SCMT120404		
RBH90-130LA-C	LBK6	68~100	90	66	CCMT120408	3.1	
RBH90-130LA-T					TCMT16T304		
RBH90-130LA-S					SCMT120404		
RBH120-164LA-C	LBK6	90~130	100	88	CCMT120408	4.8	
RBH120-164LA-T					TCMT16T304		
RBH120-164LA-S					SCMT120404		
RBH120-164LA-C	BST Series	120~164	95	100	CCMT120408	3.8	
RBH120-164LA-T					TCMT220408		
RBH120-164LA-S					SCMT120404		
RBH160-204LA-C	BST Series	160~204	95	130	CCMT120408	4.8	
RBH160-204LA-T					TCMT220408		
RBH160-204LA-S					SCMT120404		

★RBH120LA,160LA與RBH120,160為相同產品 ★RBH120LA and RBH160LA are the same as RBH120 and RBH160 individually.

新型RBH-LA雙刃粗搪刀+LBK刀柄 (MAS 403BT)

RBH-LA Indexable Twin-bit Rough Boring Head+LBK Shank (MAS 403BT)



RBH-LA + LBK 新型RBH-LA雙刃粗搪刀組合系列

規格 Specifications:

型號 Type	樣式 Fig.	搪孔範圍 Ø(Dmm)	有效長 Z	組合內容 Tool Connection		接合型號 LBK No.	全長 L	刀桿長 L1	刀桿外徑 D1	重量 KG					
				LBK刀桿 LBK shank	RBH-LA刀頭 RBH-LA boring head										
BT30-RBH25LA-130	2	25-35	100	BT30-LBK2-80	RBH25LA	2	130	80	24	0.8					
BT30-RBH32LA-140		32-45		BT30-LBK3-80	RBH32LA	3			31	1.0					
BT30-RBH40LA-140		40-55	110	BT30-LBK4-70	RBH40LA	4	140	70	39	1.4					
BT30-RBH52LA-140		52-75		BT30-LBK5-60	RBH52LA	5		60	50	1.8					
BT30-RBH68LA-150		68-100	120	BT30-LBK6-60	RBH68LA	6	150		64	3.5					
BT30-RBH90LA-160		90-130	130		RBH90LA		160		4.1						
BT40-RBH25LA-135	2	25-35	100	BT40-LBK2-85	RBH25LA	2	135	85	24	1.3					
BT40-RBH25LA-165			130	BT40-LBK2-115			165			115	1.6				
BT40-RBH32LA-155		32-45	120	BT40-LBK3-95	RBH32LA	3	155	95	31	1.5					
BT40-RBH32LA-185			150	BT40-LBK3-125			185			125	1.8				
BT40-RBH32LA-215			180	BT40-LBK3-155			215			155	2.0				
BT40-RBH40LA-155			40-55	120			BT40-LBK4-85			RBH40LA	4	155	85	39	1.9
BT40-RBH40LA-200		165		BT40-LBK4-130	200	130	2.5								
BT40-RBH40LA-245		210		BT40-LBK4-175	245	175	2.8								
BT40-RBH52LA-155		52-75		120	BT40-LBK5-75	RBH52LA	5	155	75			50			2.3
BT40-RBH52LA-205			170	BT40-LBK5-125	205			125		3.3					
BT40-RBH52LA-255			220	BT40-LBK5-175	255			175		4.0					
BT40-RBH68LA-155			68-100	120	BT40-LBK6-65			RBH68LA		6	155		65	64	3.8
BT40-RBH68LA-205		170		BT40-LBK6-115	205	115	5.2								
BT40-RBH68LA-255		220		BT40-LBK6-165	255	165	6.4								
BT40-RBH90LA-165		90-130		130	BT40-LBK6-65	RBH90LA	6		165		65	64			4.4
BT40-RBH90LA-215			180	BT40-LBK6-115	215			115	5.8						
BT40-RBH90LA-265			230	BT40-LBK6-165	265			165	7.0						
BT40-RBH120LA-165			120-164	130	BT40-BST-70			RBH120LA	BST	165			70	95	7.0
BT40-RBH160LA-165		160-204				RBH160LA	8.0								
BT50-RBH25LA-160		2	25-35	110	BT50-LBK2-110	RBH25LA	2	160	110	24	4.1				
BT50-RBH25LA-190				140	BT50-LBK2-140			190			140	4.2			
BT50-RBH32LA-185			32-45	135	BT50-LBK3-125	RBH32LA	3	185	125	31	4.4				
BT50-RBH32LA-215				165	BT50-LBK3-155			215			155	4.5			
BT50-RBH40LA-185				40-55	135			BT50-LBK4-115			RBH40LA	4	185	115	39
BT50-RBH40LA-215	165				BT50-LBK4-145			215					145		
BT50-RBH40LA-245	195		BT50-LBK4-175		245	175	5.4								
BT50-RBH40LA-275	225		BT50-LBK4-205		275	205	5.5								
BT50-RBH52LA-185	52-75		135	BT50-LBK5-105	RBH52LA	5	185	105	50	5.5					
BT50-RBH52LA-260			210	BT50-LBK5-180			260			180	6.5				
BT50-RBH52LA-320			270	BT50-LBK5-240			320			240	7.2				
BT50-RBH52LA-380			270	BT50-LBK5-300			380			300	8.6				
BT50-RBH68LA-185	2		68-100	135	BT50-LBK6-95	RBH68LA	6	185	95	64	7.0				
BT50-RBH68LA-260				210	BT50-LBK6-170			260			170	8.8			
BT50-RBH68LA-320				270	BT50-LBK6-230			320			230	10.1			
BT50-RBH68LA-380				330	BT50-LBK6-290			380			290	11.5			
BT50-RBH68LA-440	1		390	BT50-LBK6-350	RBH90LA	6	440	350	90/64	16.0					
IBT50-RBH68LA-440			IBT50-LBK6-350							13.7					
BT50-RBH90LA-195	2		90-130	145			BT50-LBK6-95			RBH90LA	6	195	95	64	7.6
BT50-RBH90LA-270				220			BT50-LBK6-170					270			170
BT50-RBH90LA-330				280	BT50-LBK6-230	330	230	10.7							
BT50-RBH90LA-390				340	BT50-LBK6-290	390	290	12.1							
BT50-RBH90LA-450	1		400	BT50-LBK6-350	RBH120LA	6	450	350	90/64	16.6					
IBT50-RBH90LA-450			IBT50-LBK6-350							14.3					
BT50-RBH120LA-195	2	120-164	150	BT50-BST-100			RBH120LA			BST	195	100	95	8.9	
BT50-RBH120LA-245			200	BT50-BST-150							245			150	10.6
BT50-RBH120LA-295			250	BT50-BST-200	295	200		13.3							
BT50-RBH120LA-345			300	BT50-BST-250	345	250		15.3							
BT50-RBH120LA-395			350	BT50-BST-300	395	300		17.3							
BT50-RBH120LA-445			400	BT50-BST-350	445	350		19.3							
BT50-RBH120LA-495			450	BT50-BST-400	495	400		21.3							
BT50-RBH160LA-195			2	160-204	150	BT50-BST-100		RBH160LA	BST		195			100	95
BT50-RBH160LA-245	200	BT50-BST-150			245	150	11.6								
BT50-RBH160LA-295	250	BT50-BST-200			295	200	14.3								
BT50-RBH160LA-345	300	BT50-BST-250			345	250	16.3								
BT50-RBH160LA-395	350	BT50-BST-300			395	300	18.3								
BT50-RBH160LA-445	400	BT50-BST-350			445	350	20.3								
BT50-RBH160LA-495	450	BT50-BST-400			495	400	22.3								

★IBT是專為抑制搪孔共振而改良之專用刀桿

★IBT is the improved type dedicated to eliminating resonance in boring



PRECISION & QUALITY

Ø200以上RBH可調式大徑雙刃粗搪刀系列 《搪孔範圍 Ø200 - Ø454mm》

RBH Indexable Twin-bit Rough Boring Head 《Boring Range from Ø200 - Ø454mm》

特色

1. 適用單刃搪孔，雙刃搪孔及高低階搪孔。搪孔範圍Ø200~Ø454mm。
2. 新型刀片滑座設計，刀背補強。加工時，滑座承受的兩個作用力相互抵消，產生最大剛性和切削力。適合各形態的搪孔作業。
3. 可依照各種不同加工需求，輕易調整搪刀，做少量多樣的加工。備有多種長度刀桿可加工至所需深度。
4. 清晰的側邊刻度，協助使用者輕易調整到所需的範圍，無須在刀具設定儀上預設。
5. 最適合在各型切削中心機或搪床上配合使用，並可搭配各種廠牌相同規格的指定刀片，節省刀具研磨時間並大幅增加搪孔效率。
6. 專利高低段差設計，平刃或高低刃均可採用。
7. 直徑 Ø200mm以上大孔徑搪刀，使用直接組件，結構簡單剛性強，調整範圍為直徑50mm。

Features

1. The head is suitable for single bit boring, twin-bit boring and step boring with working diameter from Ø200mm to Ø454mm on diameter.
2. New cartridge style with built-up rib. The pressure imposed on both cartridges counteracts producing highest rigidity and cutting efficiency, most suitable for a variety of borings.
3. Boring head can be easily adjusted to different boring needs for machining on demand. Boring depth can be extended by tool connection.
4. Clear side division provides a convenient adjustment without using a tool pre-setter.
5. Most suitable for boring on various machine centers or boring mills. Universal design accepts inserts of any brands, which will reduce tool grinding and greatly improve boring performance.
6. Patented step boring design; suitable for both level boring and step boring.
7. Boring heads over Ø200mm feature directmodule, simple structure and high rigidity with adjustment range 50mm on diameter.



規格 Specifications:

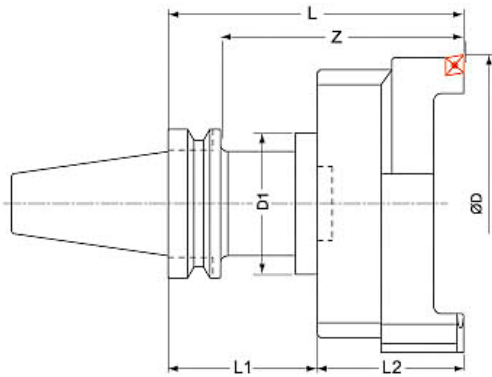
	搪頭型號 Boring Head Type	接合型號 BST No.	搪孔範圍Dmm Boring Range	搪頭長度 L2 mm	刀片規格 Insert	重量 kg Weight	
	RBH200-254-C	BST Series	200~254	95	CCMT120408	6.5	
RBH200-254-T	TCMT220408						
RBH200-254-S	SCMT120404						
RBH250-304-C	250~304				CCMT120408		8.3
RBH250-304-T					TCMT220408		
RBH250-304-S					SCMT120404		
RBH300-354-C	300~354		CCMT120408	10			
RBH300-354-T			TCMT220408				
RBH300-354-S			SCMT120404				
RBH350-404-C	350~404		CCMT120408	11.7			
RBH350-404-T			TCMT220408				
RBH350-404-S			SCMT120404				
RBH400-454-C	400~454	CCMT120408	13.4				
RBH400-454-T		TCMT220408					
RBH400-454-S		SCMT120404					

PROFESSIONAL POWER TOOL

RBH + BST Ø200以上RBH可調式大徑雙刃粗搪刀組合系列

Ø200以上RBH可調式大徑雙刃粗搪刀+BST刀柄 (MAS 403 BT)

RBH Indexable Twin-bit Rough Boring Head for Large Hole Boring+BST Shank (MAS 403 BT)



規格 Specifications:

型號 Type	搪孔範圍 Ø(Dmm)	有效長 Z	組合內容 Tool Connection		接合型號 LBK No.	全長 L	刀桿長 L1	刀桿外徑 D1	重量 KG
			BST刀桿 BST shank	RBH刀頭 RBH boring head					
BT50-RBH200-195	200-254	150	BT50-BST-100	RBH200	BST	195	100	95	11.6
BT50-RBH200-245		200	BT50-BST-150			245	150		13.3
BT50-RBH200-295		250	BT50-BST-200			295	200		16.0
BT50-RBH200-345		300	BT50-BST-250			345	250		18.0
BT50-RBH200-395		350	BT50-BST-300			395	300		20.0
BT50-RBH200-445		400	BT50-BST-350			445	350		22.0
BT50-RBH200-495		450	BT50-BST-400			495	400		24.0
BT50-RBH250-195	250-304	150	BT50-BST-100	RBH250	BST	195	100	95	13.4
BT50-RBH250-245		200	BT50-BST-150			245	150		15.1
BT50-RBH250-295		250	BT50-BST-200			295	200		17.8
BT50-RBH250-345		300	BT50-BST-250			345	250		19.8
BT50-RBH250-395		350	BT50-BST-300			395	300		21.8
BT50-RBH250-445		400	BT50-BST-350			445	350		23.8
BT50-RBH250-495		450	BT50-BST-400			495	400		25.8
BT50-RBH300-195	300-354	150	BT50-BST-100	RBH300	BST	195	100	95	15.1
BT50-RBH300-245		200	BT50-BST-150			245	150		16.8
BT50-RBH300-295		250	BT50-BST-200			295	200		19.5
BT50-RBH300-345		300	BT50-BST-250			345	250		21.5
BT50-RBH300-395		350	BT50-BST-300			395	300		23.5
BT50-RBH300-445		400	BT50-BST-350			445	350		25.5
BT50-RBH300-495		450	BT50-BST-400			495	400		27.5
BT50-RBH350-195	350-404	150	BT50-BST-100	RBH350	BST	195	100	95	16.8
BT50-RBH350-245		200	BT50-BST-150			245	150		18.5
BT50-RBH350-295		250	BT50-BST-200			295	200		21.2
BT50-RBH350-345		300	BT50-BST-250			345	250		23.2
BT50-RBH350-395		350	BT50-BST-300			395	300		25.2
BT50-RBH350-445		400	BT50-BST-350			445	350		27.2
BT50-RBH350-495		450	BT50-BST-400			495	400		29.2
BT50-RBH400-195	400-454	150	BT50-BST-100	RBH400	BST	195	100	95	18.5
BT50-RBH400-245		200	BT50-BST-150			245	150		20.2
BT50-RBH400-295		250	BT50-BST-200			295	200		22.9
BT50-RBH400-345		300	BT50-BST-250			345	250		24.9
BT50-RBH400-395		350	BT50-BST-300			395	300		26.9
BT50-RBH400-445		400	BT50-BST-350			445	350		28.9
BT50-RBH400-495		450	BT50-BST-400			495	400		30.9



PRECISION & QUALITY

Ø200以上RBH-LA組合式大徑粗搪刀系列

RBH-LA Large Diameter Modular Rough Boring Head with Diameter over Ø200mm

特色

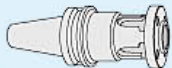





1. 通用Ø200~Ø1250mm大型孔徑加工使用。
2. 粗、精搪刀使用同基礎組件，且可另選配附件搭配使用。加工調整範圍為直徑110mm。600LA與900LA調整範圍為350mm。
3. 粗搪刀，具有多種刀片選擇，可適用於多種材質及加工方式。
4. 精搪刀另有鋁合金橫向滑板，可選用來降低刀具重量。
5. 另有外圓搪孔組件可選用，加工範圍直徑為Ø20~Ø300mm。



Features

1. This type is suitable for large diameter boring with ranges from Ø200 mm to Ø1250 mm.
2. The structure includes common flange and extension slide for both rough and finish boring heads. Available can be optional accessories for different works. Adjustment range is within 110mm on diameter. The adjustment range for both 600LA and 900LA is 350mm.
3. Options of various inserts for rough boring of different materials and boring styles.
4. Available is the horizontal slide made of Aluminum alloy to reduce total weight.
5. Options of external boring kit with boring range from Ø20mm to Ø300mm.

規格 Specifications:

搪頭型號 Boring Head Type	型號 Type		RBH 200LA	RBH 300LA	RBH 400LA	RBH 500LA	RBH 600LA	RBH 900LA	
	長度 Length(mm)		130	130	130	130	150	150	
	整組重量(kg)	合金鋼 Alloy Steel	9.5	11.5	13.5	15.5	33	43	
	Total Weight(kg)	鋁合金 Aluminum Alloy	7.2	8.0	8.8	9.6	16.0	20.7	
加工直徑 D(mm) Boring Diameter			200-310	300-410	400-510	500-610	600-950	900-1250	
組合型式 Module	接合刀桿 Taper Shank		BT50-BST / NT50-BST系列 BT50-BST / NT50-BST Series				BT50-FMA-47.625		
	連接盤 Flange		BR200				BR600	BR900	
	重量(kg)	合金鋼 Alloy Steel	合金鋼 Alloy Steel 2.7 kg				19	29	
	Weight	鋁合金 Alum. Alloy					8.8	13.5	
	橫向滑板 Extension Slide		RST200	RST300	RST400	RST500	RST300x2只(pieces)		
	重量(kg)	合金鋼 Alloy Steel	3.4	5.4	7.4	9.4	10.8		
	Weight	鋁合金 Alum. Alloy	1.1	1.9	2.7	3.5	3.8		
	滑塊 Clamp Base		RS200						
	重量(kg)	Weight	0.98 kg						
	刀片座墊片 Height Setting Shim		RS201						
重量(kg)	Weight	0.05 kg							
刀片座 Insert Holder		RB200C12	RB200T16	RB200T22	RB200S12				
適合刀片 Applicable Insert		CCMT120404	TCMT16T304	TCMT220404	SCMT120404				
重量(kg)	Weight	0.68 kg							

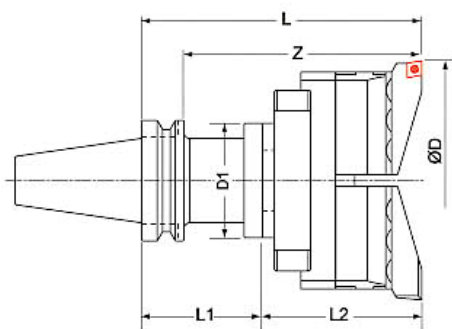
RBH-LA + BST $\varnothing 200$ 以上RBH-LA組合式大徑雙刃粗搪刀組合系列

Ø200以上RBH-LA組合式大徑雙刃粗搪刀+BST刀柄 (MAS 403 BT)

RBH-LA Indexable Twin-bit Rough Boring Head for Large Hole Boring+BST Shank (MAS 403 BT)

《搪孔範圍 Ø200 - Ø1250mm》《Boring Range from Ø200 - Ø1250mm》

搪頭型號 Boring Head Type	接合型號 BST No.	搪孔範圍D mm Boring Range	搪頭長度 L2 mm	刀片規格 Insert	重量 Weight (kg)	
					合金鋼 Alloy Steel	鋁合金 Alu Alloy
RBH200-310LA	BST Series	200~310	130	(選配刀片座) Optional Inserts	9.5	7.2
RBH300-410LA		300~410		11.5	8.0	
RBH400-510LA		400~510		13.5	8.8	
RBH500-610LA		500~610		15.5	9.6	
RBH600-950LA	FMA-47.625	600~950	150	TCMT220408	33.0	16.0
RBH900-1250LA		900~1250		SCMT120404	43.0	20.7



規格 Specifications:

型號 Type	搪孔範圍 Ø(Dmm)	有效長 Z	組合內容 Tool Connection		接合型號 LBK No.	全長 L	刀桿長 L1	刀桿外徑 D1	重量 KG	
			BST刀桿 BST shank	RBH-LA刀頭 RBH-LA boring head					合金鋼 Alloy Steel	鋁合金 Alu Alloy
BT50-RBH200LA-230	200-310	185	BT50-BST-100	RBH200LA	BST	230	100	95	14.6	12.3
BT50-RBH200LA-280		235	BT50-BST-150			280	150		16.3	14
BT50-RBH200LA-330		285	BT50-BST-200			330	200		19	16.7
BT50-RBH200LA-380		335	BT50-BST-250			380	250		21	18.7
BT50-RBH200LA-430		385	BT50-BST-300			430	300		23	20.7
BT50-RBH200LA-480		435	BT50-BST-350			480	350		25	22.7
BT50-RBH200LA-530		485	BT50-BST-400			530	400		27	24.7
BT50-RBH300LA-230		300-410	185			BT50-BST-100	RBH300LA		BST	230
BT50-RBH300LA-280	235		BT50-BST-150	280	150	18.3		14.8		
BT50-RBH300LA-330	285		BT50-BST-200	330	200	21		17.5		
BT50-RBH300LA-380	335		BT50-BST-250	380	250	23		19.5		
BT50-RBH300LA-430	385		BT50-BST-300	430	300	25		21.5		
BT50-RBH300LA-480	435		BT50-BST-350	480	350	27		23.5		
BT50-RBH300LA-530	485		BT50-BST-400	530	400	29		25.5		
BT50-RBH400LA-230	400-510		185	BT50-BST-100	RBH400LA	BST		230		100
BT50-RBH400LA-280		235	BT50-BST-150	280			150	20.3	15.6	
BT50-RBH400LA-330		285	BT50-BST-200	330			200	23	18.3	
BT50-RBH400LA-380		335	BT50-BST-250	380			250	25	20.3	
BT50-RBH400LA-430		385	BT50-BST-300	430			300	27	22.3	
BT50-RBH400LA-480		435	BT50-BST-350	480			350	29	24.3	
BT50-RBH400LA-530		485	BT50-BST-400	530			400	31	26.3	
BT50-RBH500LA-230		500-610	185	BT50-BST-100			RBH500LA	BST	230	100
BT50-RBH500LA-280	235		BT50-BST-150	280	150	22.3			16.4	
BT50-RBH500LA-330	285		BT50-BST-200	330	200	25			19.1	
BT50-RBH500LA-380	335		BT50-BST-250	380	250	27			21.1	
BT50-RBH500LA-430	385		BT50-BST-300	430	300	29			23.1	
BT50-RBH500LA-480	435		BT50-BST-350	480	350	31			25.1	
BT50-RBH500LA-530	485		BT50-BST-400	530	400	33			27.1	
BT50-RBH600LA-230	600-950		185	BT50-	RBH600LA	FMA			230	75
BT50-RBH900LA-230	900-1250	FMA47.625-75		RBH900LA	47.625		50	27.7		

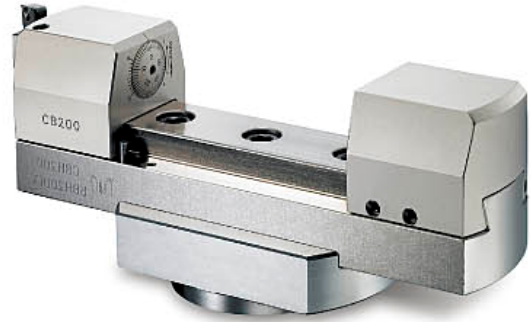


Ø200以上CBH組合式大徑微調精搪刀系列

CBH Large Diameter Modular Finish Boring Head with Diameter over Ø200mm

特色

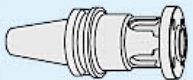




1. 通用Ø200~Ø1250mm大型孔徑加工使用。
2. 粗、精搪刀使用同基礎組件，且可另選配附件搭配使用。加工調整範圍為直徑110mm。CBH600與900調整範圍為350mm。
3. 精搪刀另有鋁合金橫向滑板，可選用來降低刀具重量。



Features

1. This type is suitable for large diameter boring with ranges from Ø200mm to Ø1250mm.
2. The structure includes common flange and extension slide for both rough and finish boring heads. Available can be optional accessories for different works. Adjustment range is within 110mm on diameter. The adjustment range for bother CBH600 and CBH900LA is 350mm.
3. Available is the horizontal slide made of Aluminum alloy to reduce total weight.

規格 Specifications:

搪頭型號 Boring Head Type	型號 Type		CBH200	CBH300	CBH400	CBH500	CBH600	CBH900	
	長度 Length		130	130	130	130	150	150	
	整組重量(kg) Total Weight(kg)	合金鋼 Alloy Steel	9.7	11.7	13.7	15.7	33	43	
		鋁合金 Aluminum Alloy	7	7.8	8.6	9.4	15.8	20.5	
加工直徑 D(mm) Boring Diameter		200-310	300-410	400-510	500-610	600-950	900-1250		
組合型式 Module	接合刀桿 Taper Shank		BT50-BST / NT50-BST 系列 BT50-BST / NT50-BST Series				BT50-FMA-47.625		
	連接盤 Flange		BR200				BR600	BR900	
	重量(kg) Weight	合金鋼 Alloy Steel	合金鋼 Alloy Steel 2.7 kg				19	29	
		鋁合金 Alum. Alloy					8.8	13.5	
	橫向滑板 Extension Slide		RST200	RST300	RST400	RST500	RST300x2只(pieces)		
	重量(kg) Weight	合金鋼 Alloy Steel	3.4	5.4	7.4	9.4	10.8		
鋁合金 Alum. Alloy		1.1	1.9	2.7	3.5	3.8			
平衡滑塊 Balance Weight		RBN200							
重量(kg) Weight		1.6 kg							
微調滑塊 Finish Head		CB200							
重量(kg) Weight		1.6 kg							
適合刀片 Applicable Insert		TP08/M2.2/T7, TP09/M2.5/T8, TC11/M2.5/T8							

CBH + BST 200以上CBH大孔徑微調精搪刀組合系列

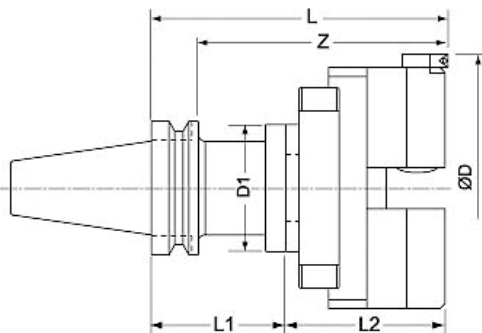
Ø200mm以上CBH大孔徑微調精搪刀+BST刀柄(MAS 403 BT)

CBH Large Diameter Modular Finish Boring Head + BST Shank (MAS 403 BT)

《搪孔範圍 Ø200-Ø1250mm》《Boring Range from Ø200-Ø1250mm》



搪頭型號 Boring Head Type	接合型號 BST No.	搪孔範圍ØD(mm) Boring Range	搪頭長度 L2 mm	刀片規格 / 螺絲 / 刀片扳手 Insert/Clamping Screw/Wrench	重量 Weight (kg)	
					合金鋼 Alloy Steel	鋁合金 Alum. Alloy
CBH200	BST 系列 BST Series	200-310	130	TP08/M2.2/T7 TP09/M2.5/T8 TC11/M2.5/T8	9.7	7.0
CBH300		300-410			11.7	7.8
CBH400		400-510			13.7	8.6
CBH500		500-610			15.7	9.4
CBH600	FMA-47.625	600-950	33		15.8	
CBH900		900-1250	43		20.5	



規格 Specifications:

型號 Type	搪孔範圍 Ø(Dmm)	有效長 Z	組合內容 Tool Connection		接合型號 LBK No.	全長 L	刀桿長 L1	刀桿外徑 D1	重量 kg	
			BST刀桿 BST shank	CBH刀頭 CBH boring head					合金鋼 Alloy Steel	鋁合金 Alum. Alloy
BT50-CBH200-230	200-310	185	BT50-BST-100	CBH200	BST	230	100	95	14.8	12.1
BT50-CBH200-280		235	BT50-BST-150			280	150		16.5	13.8
BT50-CBH200-330		285	BT50-BST-200			330	200		19.2	16.5
BT50-CBH200-380		335	BT50-BST-250			380	250		21.2	18.5
BT50-CBH200-430		385	BT50-BST-300			430	300		23.2	20.5
BT50-CBH200-480		435	BT50-BST-350			480	350		25.2	22.5
BT50-CBH200-530		485	BT50-BST-400			530	400		27.2	24.5
BT50-CBH300-230	300-410	185	BT50-BST-100	CBH300		230	100		16.8	12.9
BT50-CBH300-280		235	BT50-BST-150			280	150		18.5	14.6
BT50-CBH300-330		285	BT50-BST-200			330	200		21.2	17.3
BT50-CBH300-380		335	BT50-BST-250			380	250		23.2	19.3
BT50-CBH300-430		385	BT50-BST-300			430	300		25.2	21.3
BT50-CBH300-480		435	BT50-BST-350			480	350		27.2	23.3
BT50-CBH300-530		485	BT50-BST-400			530	400		29.2	25.3
BT50-CBH400-230	400-510	185	BT50-BST-100	CBH400	230	100	18.8	13.7		
BT50-CBH400-280		235	BT50-BST-150		280	150	20.5	15.4		
BT50-CBH400-330		285	BT50-BST-200		330	200	23.2	18.1		
BT50-CBH400-380		335	BT50-BST-250		380	250	25.2	20.1		
BT50-CBH400-430		385	BT50-BST-300		430	300	27.2	22.1		
BT50-CBH400-480		435	BT50-BST-350		480	350	29.2	24.1		
BT50-CBH400-530		485	BT50-BST-400		530	400	31.2	26.1		
BT50-CBH500-230	500-610	185	BT50-BST-100	CBH500	230	100	20.8	14.5		
BT50-CBH500-280		235	BT50-BST-150		280	150	22.5	16.2		
BT50-CBH500-330		285	BT50-BST-200		330	200	25.2	18.9		
BT50-CBH500-380		335	BT50-BST-250		380	250	27.2	20.9		
BT50-CBH500-430		385	BT50-BST-300		430	300	29.2	22.9		
BT50-CBH500-480		435	BT50-BST-350		480	350	31.2	24.9		
BT50-CBH500-530		485	BT50-BST-400		530	400	33.2	26.9		
BT50-CBH600-230	600-950	185	BT50-	CBH600	FMA	230	75	128	40.0	22.8
BT50-CBH900-230	900-1250		FMA47.625-75	CBH900	47.625				50.0	27.5



PRECISION & QUALITY

CBI小徑微調精搪刀系列《搪孔範圍Ø3 - Ø40mm》

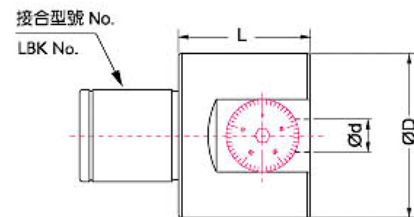
Small Diameter Finish Boring Head Type CBI 《Boring Range from Ø3 - Ø40mm》

特色

1. CBI小徑精搪刀有三種選擇，適用於Ø8~Ø40mm小孔徑使用，如使用全鎢鋼小徑精搪刀桿可加工Ø3~Ø10mm小孔。
2. 調整刻度為圓周50等分，每格調整尺寸為直徑0.01mm，另有副尺可作更精細之調整。
3. 精密導程螺絲位於內部，不受切屑、磨耗、生鏽等影響，具有內部潤滑，精準耐用。

Features

1. Available are three different styles enabling small diameter boring from Ø8mm to Ø40mm. Boring range can be within Ø3mm to Ø10mm if small diameter solid carbide boring bar has been employed.
2. The dial has been graduated into 50 divisions, each of which is 0.01mm on diameter. Available is a sub-dial for finer adjustment.
3. High precision internal lead screw with inner lubrication is free from the effects of chip, featuring high durability.

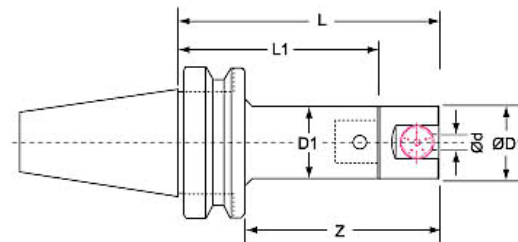


規格 Specifications:

搪頭型號 Boring Head Type	接合型號 LBK No.	內置刀桿Ødmm Internal Diameter	外徑Ø D mm External Diameter	長度 Length	移動量 mm Feed	本體重量kg Weight
CBI 4	LBK4	10	39	32	0 - 2.0	0.4
CBI 5	LBK5	12	50	40	0 - 3.5	0.8
CBI 6	LBK6	16	64	50	0 - 5.0	1.4

CBI小徑微調精搪刀系列+LBK刀柄《MAS 403 BT》

CBI Small Diameter Finish Boring Head + LBK Shank 《MAS 403 BT》



CBI小徑微調精搪刀組合系列

規格 Specifications:

型號 Type	移動量 F mm	延伸長 Z	組合內容 Tool Connection		接合型號 LBK No.	全長 L	刀桿長 L1	刀桿外徑 D1	內置刀桿 d mm	重量 KG
			BST刀桿 BST shank	CBI刀頭 CBI boring head						
BT30-CBI4-100	0-2.0	70	BT30-LBK4-070	CBI4	4	100	70	39	10	1.2
BT30-CBI5-100	0-3.5	70	BT30-LBK5-060	CBI5	5	100	60	50	12	1.6
BT30-CBI6-110	0-5.0	80	BT30-LBK6-060	CBI6	6	110	60	64	16	2.4
BT40-CBI4-115	0-2.0	75	BT40-LBK4-085	CBI4	4	115	85	39	10	1.7
BT40-CBI5-115	0-3.5	75	BT40-LBK5-075	CBI5	5	115	75	50	12	2.1
BT40-CBI6-115	0-5.0	75	BT40-LBK6-065	CBI6	6	115	65	64	16	2.7
BT50-CBI4-145	0-2.0	95	BT50-LBK4-115	CBI4	4	145	115	39	10	4.7
BT50-CBI5-145	0-3.5	95	BT50-LBK5-105	CBI5	5	145	105	50	12	5.3
BT50-CBI6-145	0-5.0	95	BT50-LBK6-095	CBI6	6	145	95	64	16	5.9

CBI小徑微調精搪刀 + LBK刀柄 (MAS 403 BT)+小徑搪刀桿BJ系列

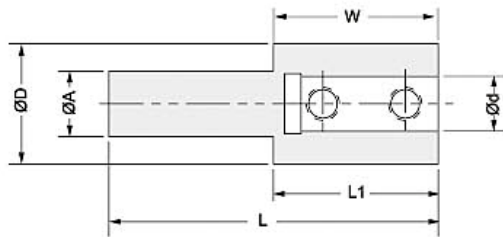
CBI Small Diameter Finish Boring Head + LBK Shank (MAS 403 BT) + Tool Extension Type BJ

規格 Specifications:

型號 Type	移動量 F mm	延伸長 Z	組合內容 Tool Connection			接合型號 LBK No.	全長 L	刀桿長 L1	外徑 D1	重量 KG
			LBK刀桿 LBK shank	CBI刀頭	小徑搪刀桿					
BT30-CBI4-BJ10-5PCS	0-2.0	70	BT30-LBK4-070	CBI4	BJ10-5PCS	4	100	70	39	1.9
BT30-CBI5-BJ12-5PCS	0-3.5	70	BT30-LBK5-060	CBI5	BJ12-5PCS	5	100	60	50	2.3
BT30-CBI6-BJ16-8PCS	0-5.0	80	BT30-LBK6-060	CBI6	BJ16-8PCS	6	110	60	64	4.6
BT40-CBI4-BJ10-5PCS	0-2.0	75	BT40-LBK4-085	CBI4	BJ10-5PCS	4	115	85	39	2.4
BT40-CBI5-BJ12-5PCS	0-3.5	75	BT40-LBK5-075	CBI5	BJ12-5PCS	5	115	75	50	2.8
BT40-CBI6-BJ16-8PCS	0-5.0	75	BT40-LBK6-065	CBI6	BJ16-8PCS	6	115	65	64	4.9
BT50-CBI4-BJ10-5PCS	0-2.0	95	BT50-LBK4-115	CBI4	BJ10-5PCS	4	145	115	39	5.4
BT50-CBI5-BJ12-5PCS	0-3.5	95	BT50-LBK5-105	CBI5	BJ12-5PCS	5	145	105	50	6.0
BT50-CBI6-BJ16-8PCS	0-5.0	95	BT50-LBK6-095	CBI6	BJ16-8PCS	6	145	95	64	8.1

CBI系列專用小徑搪刀延長桿 AC型

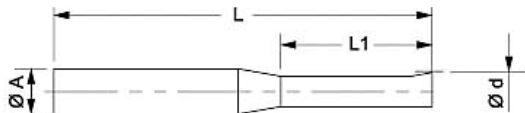
Extension Adapter for Small Diameter Boring Bar Dedicated to CBI Series Type AC



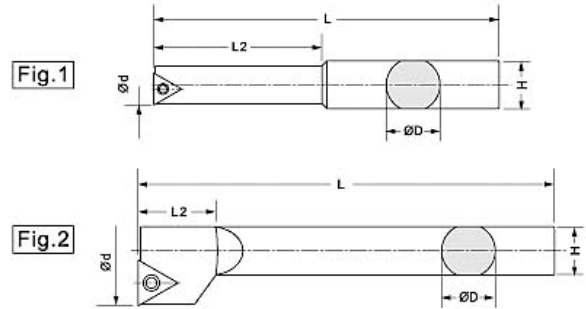
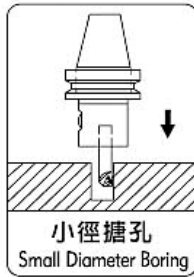
型號 Type	柄徑 Ø A(mm)	外徑 External Dia. ØD (mm)	內徑 Ø d(mm)	延伸長度 L1 (mm)	孔深 W (mm)	全長 Length L (mm)
AC1006-30	10	18	06	30	25	55
AC1206-35	12	22	06	35	25	65
AC1210-35	12	22	10	35	30	65
AC1606-35	16	16	06	35	25	85
AC1610-35	16	22	10	35	30	85

CBI系列專用超小徑碳化鎢搪孔刀 SBJ型

Super Fine Diameter Tungsten Carbide Boring Bar Dedicated to CBI Series Type SBJ



型號 Type	搪孔範圍 Boring Range				柄徑 ØA	有效長 Length L1 (mm)	總長 Total Length L (mm)
	最小加工 直徑 Ød min	最大加工直徑 Ød max					
		CBI 4	CBI 5	CBI 6			
SBJ0603-15	3	7	10	13	6	15	50
SBJ0604-20	4	8	11	14	6	20	50
SBJ0605-25	5	9	12	15	6	25	60
SBJ0606-30	6	10	13	16	6	30	60
SBJ1008-35	8	12	15	18	10	35	75
SBJ1010-40	10	14	17	20	10	40	75



CBI4專用小徑搪刀桿BJ型《搪孔範圍Ø8-Ø24mm》

Fine Boring Bar Type BJ (for CBI 4) 《Boring Range Ø8 - Ø24mm》

型號 Type	Fig.	ØD (mm)	Ød (mm)	L (mm)	L2 (mm)	H (mm)	刀片規格 Insert	螺絲 Clamp Screw	板手 Wrench
BJ1008-32	1	10	8	64	32	9	TB..0601..	M2	T6
BJ1010-40			10	72	40				
BJ1012-45	2		12	77	27		TP..0902..	M2.5	T8
BJ1016-45			16	77	27				
BJ1020-45			20	77	27				
※ BJ10-5PCS			BJ1008-32	BJ1010-40	BJ1012-45				

CBI5專用小徑搪刀桿BJ型《搪孔範圍Ø8-Ø27mm》

Fine Boring Bar Type BJ (for CBI5) 《Boring Range Ø8 - Ø27mm》

型號 Type	Fig.	ØD (mm)	Ød (mm)	L (mm)	L2 (mm)	H (mm)	刀片規格 Insert	螺絲 Clamp Screw	板手 Wrench
BJ1208-32	1	12	8	64	32	9	TB..0601..	M2	T6
BJ1210-40			10	72	40				
BJ1212-45			12	77	45				
BJ1216-45	2		16	77	22		TP..0902..	M2.5	T8
BJ1220-45			20	77	25				
※ BJ12-5PCS	BJ1208-32		BJ1210-40	BJ1212-45	BJ1216-45		BJ1220-45		

CBI6專用小徑搪刀桿BJ型《搪孔範圍Ø8-Ø50mm》

Fine Boring Bar Type BJ (for CBI 6) 《Boring Range Ø8 - Ø50mm》

型號 Type	Fig.	ØD (mm)	Ød (mm)	L (mm)	L2 (mm)	H (mm)	刀片規格 Insert	螺絲 Clamp Screw	板手 Wrench
BJ1608-32	1	16	8	74	32	15	TB..0601..	M2	T6
BJ1610-40			10	75	40				
BJ1612-53			12	85	53				
BJ1616-68			16	100	68				
BJ1620-83	2		20	115	83		TP..1103..	M3	T9
BJ1625-90			25	122	90				
BJ1630-90			30	122	90				
BJ1640-90			40	122	90				
※ BJ16-8PCS	BJ1608-32	BJ1610-40	BJ1612-53	BJ1616-68	BJ1620-83	BJ1625-90	BJ1630-90	BJ1640-90	

※表示盒裝包裝
※ In Box Package

※切削加工時，小徑搪刀桿以3倍直徑伸出量為佳。
※ Note: Outstretch of small diameter boring is better within 3 times of its diameter when in use.



碳化鎢組合式小徑搪刀桿專用套筒EC型

Collet for Tungsten Carbide small Diameter Modular Boring Bar Series Type EC

	型號 Type	外徑 D (mm)	內徑 D1 (mm)	適用鎢鋼刀柄 Applicable Carbide Tool Holder
	EC1608	16	8	ST08 , HC08
	EC1610	16	10	ST10 , HC10
	EC1612	16	12	ST12 , HC12
	EC1614	16	14	ST14

碳化鎢組合式小徑搪刀桿ST型

Tungsten Carbide Small Diameter Modular Boring Bar Type SC



型號 Type	全長 L (mm)	柄徑 D (mm)	結合牙 M (mm)	適用搪孔頭 Applicable Insert Holder	適用套筒 Applicable Bushing
ST08-W5-100L	100	8	M5	BE09A, BE10.5A	EC1608
ST10-W6-110L	110	10	M6	BE12A	EC1610
ST12-W6-120L	120	12		BE14A, BE16A	EC1612
ST14-W6-160L	160	14		BE16A	EC1614
ST16-W10-160L	160	16	M10	BE18A, BE20A, BE22A, BE24A BE26A, BE28A, BE30A, BE32A BE34A, BE36A, BE38A, BE40A	----

高速鋼組合式小徑搪刀桿HC型

Modular H.S.S Fine Boring Bar Type HC

型號 Type	全長 L (mm)	柄徑 D (mm)	結合牙 M (mm)	適用搪孔頭 Applicable Insert Holder	適用套筒 Applicable Bushing
HC08-M5-075	75	8	M5	BE09A, BE10.5A	EC1608
HC10-M6-095	95	10	M6	BE12A	EC1610
HC12-M6-115	115	12	M6	BE14A, BE16A	EC1612
HC12-M10-130		12	M6	BE14A, BE16A	EC1612
HC16-M10-130	130	16	M10	BE18A, BE20A, BE22A, BE24A BE26A, BE28A, BE30A, BE32A BE34A, BE36A, BE38A, BE40A	----

組合式搪孔頭 BE型 《搪孔範圍 Ø9-Ø50mm》

Modular Insert Holder Type BE 《Boring Range from Ø9 - Ø50mm》

	型號 Type	d (mm)	H (mm)	L (mm)	M (mm)	刀片規格 Insert	螺絲 Clamping Screw	板手 Wrench
	BE09A	9	7	18	M5	TP..0802..	M2.2	T7
	BE10.5A	10.5						
	BE12A	12	10	23	M6			
	BE14A	14						
	BE16A	16						
	BE18A	18	14	27	M10			
	BE20A	20						
	BE22A	22						
	BE24A	24						
	BE26A	26						
	BE28A	28						
	BE30A	30						
	BE32A	32						
	BE34A	34						
	BE36A	36						
	BE38A	38						
BE40A	40							

超硬整體碳化鎢製搪刀桿 《搪孔範圍Ø20 - Ø75mm》

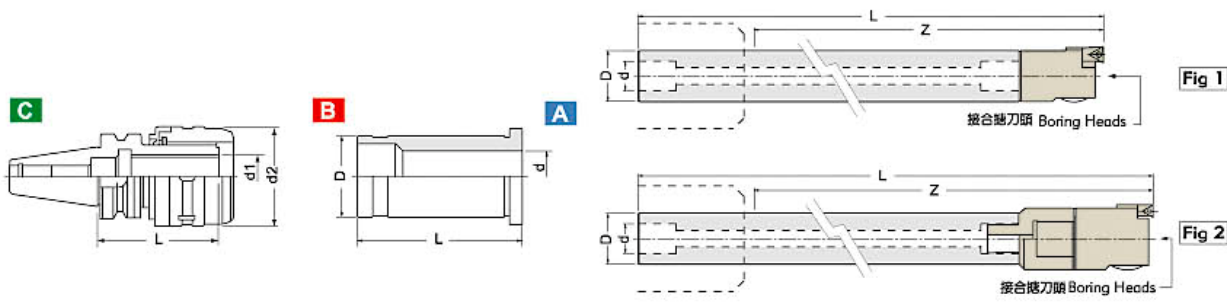
Super Hard Solid Tungsten Carbide Boring Bar 《Boring Range from Ø20 - Ø75mm》

特色

1. 超硬碳化鎢製搪刀桿，使用高韌性配方製造，堅韌耐用，實現高硬度、高剛性、高抗震性，可施行超深孔搪孔加工(10D)。
2. 各種規格均有內部水孔，深孔加工時排屑及冷卻效果良好。
3. 直柄結構，加工深度可依加工須求自行調整。
4. 本體兩端均設有結合孔，如遇一端損壞時，另一端即能配合使用，增加刀桿本身價值，更符合經濟效益。

Features

1. Super hard tungsten carbide boring bar made from high toughness compound is tough and durable, highly materializing features of super hardness, high rigidity and extra vibration resistance, most suitable for extra depth boring (10D).
2. Standard internal coolant hole is built in every size of the bar, best for cooling and chip evacuation in deep hole boring.
3. Featuring straight shank structure, the bar can be adjusted to different working lengths.
4. On both ends of main body integrated are soldering holes. One hole will be superseded by the other upon breaking. This will reduce your cost and greatly increase the value of boring bar.



A 碳化鎢直柄搪刀桿 Super Head Solid Tungsten Carbide Boring Bar

規格 Specifications:

型號 Type	樣式 Fig	內孔徑 Inside Dia. d (mm)	外徑 External Dia. D (mm)	全長 Length L (mm)	有效長 Z (mm)	接合搪刀頭 Applicable Boring Heads	搪孔範圍 Boring Diameter (mm)	重量 Weight (kg)
SC19-LBK1-150L	1	11	19	225	150	CBH20	20-26	0.8
SC19-LBK1-200L				275	200			1
SC24-LBK2-180L		14	24	260	180	CBH25	25-33	1.45
SC24-LBK2-240L				320	240			1.8
SC32-LBK3-240L	2	18	32	320	240	CBH32	33-42	2.8
SC32-LBK3-310L				390	310			3.5
SC32-LBK3/4-280L				18/22	32/39			365
SC32-LBK3/4-350L	435	350	3.8					
SC40-LBK4-310L	1	22	40	390	310	CBH40	41-55	5
SC40-LBK4-400L				480	400			6.5
SC40-LBK4/5-360L	2	22/28	40/50	445	360	CBH52	52-75	5.6
SC40-LBK4/5-450L				535	450			7.1

※此規格不含搪刀頭 ※Boring head is not included.

※LBK3/4與LBK4/5為小變大異徑延長桿 ※LBK3/4 and LBK4/5 are extensions with magnifying diameter.



B 碳化鎢LBK直柄搪刀桿專用套筒 Collet for Super Head Solid Tungsten Carbide Boring Bar

規格 Specifications:

型號 Type	內孔徑 Inside Dia. d (mm)	外徑 External Dia. D (mm)	全長 Length L (mm)	重量 Weight (kg)
C32-19	19	32	65	0.2
C32-24	24	32	65	0.2



C 直筒式立銑刀夾頭 Power Chuck Holder Type MLC for Super Head Solid Tungsten Carbide Boring Bar

規格 Specifications:

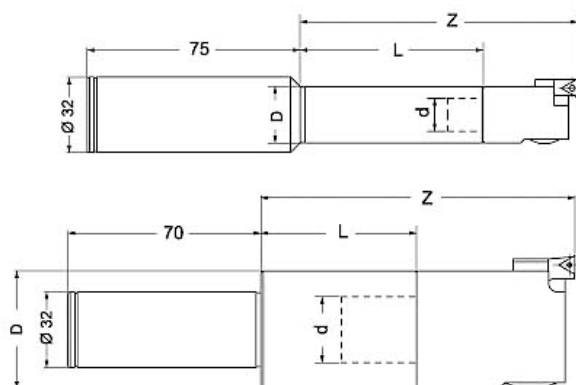
型號 Type	刀桿長 Length L (mm)	內徑 Inside Dia. d1 (mm)	外徑 External Dia. d2 (mm)	重量 Weight (kg)
BT40-MLC32-090	90	32	73	2.6
BT50-MLC32-110	110	32	73	5.2
BT50-OC32-110	110	32	68	6.0
BT50-OC40-110	110	40	78	6.5



※BT50-OC32, BT50-OC40為油壓夾頭 ※Both BT50-OC32-110 and BT50-OC40-110 are Hydraulic Chucks.

C32直柄搪刀桿

C32 Straight Shank Boring Bar 接合搪刀頭



規格 Specifications:

型號 Type	內孔徑 Inside Dia. d (mm)	外徑 External Dia. D (mm)	長度 Length L (mm)	有效長 Z (mm)	接合搪刀頭 Applicable Boring Heads	重量 Weight (kg)
C32-LBK1-075L	11	19	75	110	CBH20	0.5
C32-LBK2-070L	14	24	70	110	RBH25 ; RBH25LA	0.55
C32-LBK2-120L	14	24	120	160	CBH25	0.8
C32-LBK3-070L	18	31	70	110	RBH32 ; RBH32LA	0.65
C32-LBK3-120L	18	31	120	160	CBH32	0.95
C32-LBK4-060L	22	39	60	110	RBH40 ; RBH40LA	0.8
C32-LBK4-110L	22	39	110	160	CBH40 ; CBI 4	1.2
C32-LBK5-060L	28	50	60	120	RBH52 ; RBH52LA	1
C32-LBK5-120L	28	50	120	180	CBH52 ; CBI 5	1.95
C32-LBK6-060L	36	64	60	130	RBH68 ; RBH90 RBH68LA ; RBH90LA	1.55
C32-LBK6-120L	36	64	120	190	CBH68,100,150 ; CBI 6	2.9

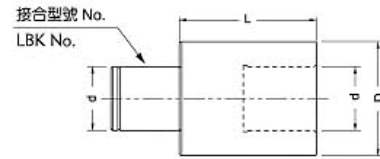
※此規格不含搪刀頭 ※Boring head is not included.



LBK EXTENSION

等徑搪刀延長桿

Extension(Constant Diameter)

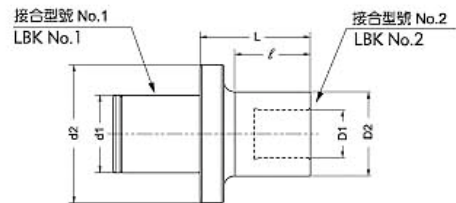


規格 Specifications:

規格 Type	d mm	D mm	L mm	接合搪刀頭 Applicable Boring Heads	重量 Weight
LBK1-1-30L	11	19	30	CBH20	0.07
LBK2-2-30L	14	24	30	RBH25 ; CBH25	0.1
LBK3-3-30L	18	31	30	RBH32 ; CBH32	0.15
LBK4-4-45L	22	39	45	RBH40 ; CBH40 ; CB14	0.4
LBK5-5-60L	28	50	60	RBH52 ; CBH52 ; CB15	0.8
LBK6-6-60L	36	64	60	RBH68/RBH90 ; CBH68,100,150 ; CB16	1.4

異徑搪刀延長桿

Extension(Reducing)



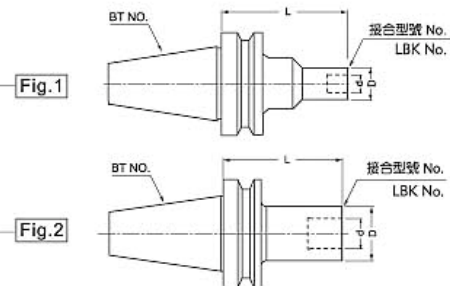
規格 Specifications:

型號 Type	d 1 mm	d 2 mm	D1 mm	D2 mm	L mm	ℓ mm	接合搪刀頭 Applicable Boring Heads	重量 kg Weight
LBK2-1-36L	14	24	11	19	36	30	CBH20	0.1
LBK3-1-41L	18	31			41	30	CBH20	0.15
LBK3-2-37L			14	24	37	25	RBH25 ; CBH25	0.15
LBK4-1-58L	22	39	11	19	58	40	CBH20	0.3
LBK4-2-50L			14	24	50	36	RBH25 ; CBH25	0.3
LBK4-3-50L			18	31	50	37	RBH32 ; CBH32	0.35
LBK5-1-60L	28	50	11	19	60	40	CBH20	0.45
LBK5-2-54L			14	24	54	35	RBH25 ; CBH25	0.45
LBK5-2-74L			74	55	RBH25 ; CBH25	0.5		
LBK5-3-47L			18	31	47	29	RBH32 ; CBH32	0.5
LBK5-3-72L			72	54	RBH32 ; CBH32	0.6		
LBK5-4-42L			42	25	RBH40 ; CBH40	0.5		
LBK5-4-67L	67	50	RBH40 ; CBH40	0.7				
LBK6-1-70L	36	64	11	19	70	40	CBH20	0.9
LBK6-2-63L			14	24	63	45	RBH25 ; CBH25	0.7
LBK6-2-93L			93	75	RBH25 ; CBH25	0.8		
LBK6-3-56L			18	31	56	39	RBH32 ; CBH32	0.75
LBK6-3-96L			96	79	RBH32 ; CBH32	0.95		
LBK6-4-51L			51	35	RBH40 ; CBH40	0.85		
LBK6-4-101L			101	85	RBH40 ; CBH40	1.3		
LBK6-5-41L			41	25	RBH52 ; CBH52	0.85		
LBK6-5-91L			91	75	RBH52 ; CBH52	1.45		

搪刀刀桿 BST系列, LBK系列

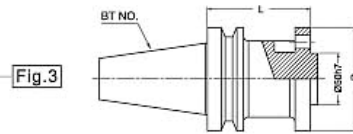
Taper Shank for Boring Heads Series BST, LBK

LBK系列
LBK Series



BST+LBK FOR BORING HEADS SERIES

BST系列
BST Series



規格 Specifications:

型號 Type	機式 Fig.	長度(L)mm Length	外徑(D)mm External Diameter	接合搪刀頭 Applicable Boring Heads	重量kg Weight	
BT30-LBK1-070L	2	70	19	CBH20	0.5	
BT30-LBK2-080L		80	24	RBH25 ; CBH25	0.6	
BT30-LBK3-080L		80	31	RBH32 ; CBH32	0.7	
BT30-LBK4-070L		70	39	RBH40 ; CBH40 ; CBI 4	0.8	
BT30-LBK5-060L		60	50	RBH52 ; CBH52 ; CBI 5	0.8	
BT30-LBK6-060L		60	64	RBH68 ; RBH90 ; CBH68 ; CBH100 ; CBH150 ; CBI6	1.0	
BT40-LBK1-075L	2	75	19	CBH20	1.0	
BT40-LBK1-105L		105	19	CBH20	1.2	
BT40-LBK2-085L		85	24	RBH25 ; CBH25	1.1	
BT40-LBK2-115L		115	24	RBH25 ; CBH25	1.4	
BT40-LBK3-095L		95	31	RBH32 ; CBH32	1.2	
BT40-LBK3-125L		125	31	RBH32 ; CBH32	1.5	
BT40-LBK3-155L		155	31	RBH32 ; CBH32	1.7	
BT40-LBK4-085L		85	39	RBH40 ; CBH40 ; CBI4	1.3	
BT40-LBK4-130L		130	39	RBH40 ; CBH40 ; CBI4	1.9	
BT40-LBK4-175L		175	39	RBH40 ; CBH40 ; CBI4	2.2	
BT40-LBK5-075L		75	50	RBH52 ; CBH52 ; CBI5	1.3	
BT40-LBK5-125L		125	50	RBH52 ; CBH52 ; CBI5	2.3	
BT40-LBK5-175L		175	50	RBH52 ; CBH52 ; CBI5	3.0	
BT40-LBK6-065L		65	64	RBH68 ; RBH90 ; CBH68 ; CBH100 ; CBH150 ; CBI6	1.3	
BT40-LBK6-115L		115	64	RBH68 ; RBH90 ; CBH68 ; CBH100 ; CBH150 ; CBI6	2.7	
BT40-LBK6-165L		165	64	RBH68 ; RBH90 ; CBH68 ; CBH100 ; CBH150 ; CBI6	3.9	
BT50-LBK1-115L		1	115	31/19	CBH20	4.0
BT50-LBK1-145L			145	31/19	CBH20	4.1
BT50-LBK2-110L	2	110	24	RBH25 ; CBH25	3.9	
BT50-LBK2-140L		140	24	RBH25 ; CBH25	4.0	
BT50-LBK3-125L		125	31	RBH32 ; CBH32	4.1	
BT50-LBK3-155L		155	31	RBH32 ; CBH32	4.2	
BT50-LBK4-115L		115	39	RBH40 ; CBH40 ; CBI4	4.3	
BT50-LBK4-145L		145	39	RBH40 ; CBH40 ; CBI4	4.4	
BT50-LBK4-175L		175	39	RBH40 ; CBH40 ; CBI4	4.8	
BT50-LBK4-205L		205	39	RBH40 ; CBH40 ; CBI4	4.9	
BT50-LBK5-105L	1	105	50	RBH52 ; CBH52 ; CBI5	4.5	
BT50-LBK5-180L		180	50	RBH52 ; CBH52 ; CBI5	5.5	
BT50-LBK5-240L		240	50	RBH52 ; CBH52 ; CBI5	6.2	
BT50-LBK5-300L	1	300	64/50	RBH68 ; RBH90 ; CBH68 ; CBH100 ; CBH150 ; CBI6	7.6	
BT50-LBK6-095L	2	95	64	RBH68 ; RBH90 ; CBH68 ; CBH100 ; CBH150 ; CBI6	4.5	
BT50-LBK6-170L		170	64	RBH68 ; RBH90 ; CBH68 ; CBH100 ; CBH150 ; CBI6	6.3	
BT50-LBK6-230L		230	64	RBH68 ; RBH90 ; CBH68 ; CBH100 ; CBH150 ; CBI6	7.6	
BT50-LBK6-290L		290	64	RBH68 ; RBH90 ; CBH68 ; CBH100 ; CBH150 ; CBI6	9.0	
BT50-LBK6-350L	1	350	90/64	RBH68 ; RBH90 ; CBH68 ; CBH100 ; CBH150 ; CBI6	13.5	
IBT50-LBK6-350L	2	350	64	RBH68 ; RBH90 ; CBH68 ; CBH100 ; CBH150 ; CBI6	11.2	
BT40-BST-070L	3	70	95	RBH120以上 CBH200以上 大徑搪刀系列	3.2	
BT50-BST-100L		100	95	RBH120 and above; CBH200 and above; large diameter boring heads series	5.1	
BT50-BST-150L		150	95	RBH120 and above; CBH200 and above; large diameter boring heads series	6.8	
BT50-BST-200L		200	95	RBH120 and above; CBH200 and above; large diameter boring heads series	9.6	
BT50-BST-250L		250	95	RBH120 and above; CBH200 and above; large diameter boring heads series	11.5	
BT50-BST-300L		300	95	RBH120 and above; CBH200 and above; large diameter boring heads series	13.5	
BT50-BST-350L		350	95	RBH120 and above; CBH200 and above; large diameter boring heads series	15.5	
BT50-BST-400L		400	95	RBH120 and above; CBH200 and above; large diameter boring heads series	17.5	
BT50-FMA47.625-75		75	128	RBH600LA, RBH900LA, CBH600, CBH900	7.0	

